

BUILD A BETTER CALF[®] ACCEL RS

RECOVERY SOLUTION FOR YOUNG CATTLE

Source of electrolytes, energy, digestive health supplements and live (viable) naturally occurring microorganisms to aid in young cattle recovery



AVAILABLE PACKAGE SIZES

- 4 oz. packet (single dose)
 - Case = 18 - 4 oz. packets
- 6 lb. pail*
 - Case = 4 - 6 lb. pails
- 25 lb. bag*
 - Pallet = 80 - 25 lb. bags

*Enclosed scoop holds ~4 oz. of Accel RS
Weigh powder for accurate mixing

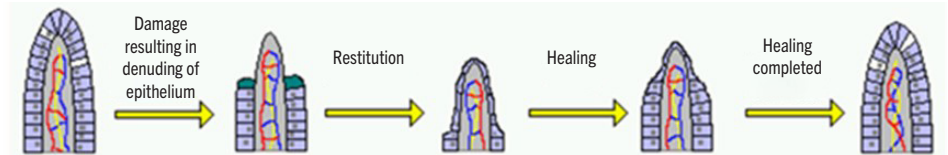
STORAGE

- Store in a cool, dry place. Keep tightly closed.

RESEARCH-SUPPORTED FEATURES AND BENEFITS

Restore

- Plasma helps facilitate gut repair, reduce peak diarrhea volume, improve intestinal permeability and aid in the regeneration of the villous surface
- Plasma is a great source of functional proteins including antibodies, growth factors, hormones, immune cells and antimicrobial compounds



Re-energize

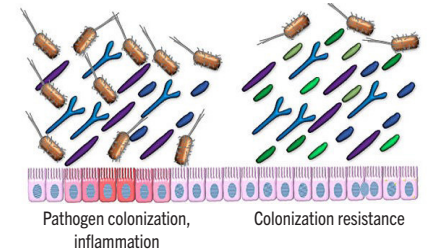
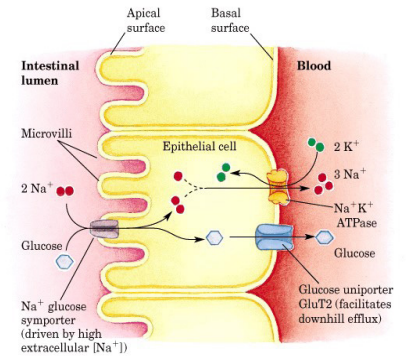
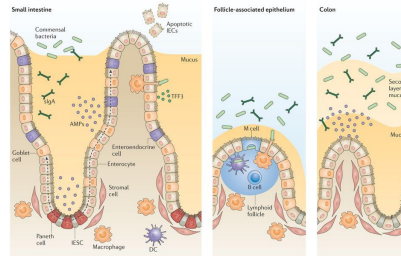
- The calf needs energy to mount an immune response
- Glucose provides the energy the calf needs to get up and facilitates nutrient and electrolyte absorption via sodium channels

Recolonize

- Includes Tri-Mic WD as a source of live (viable) naturally occurring microorganisms. Tri-Mic WD repopulates the digestive tract with beneficial microflora ("good bacteria") which help keep the digestive environment less tolerant to pathogen proliferation.

Rehydrate

- Dehydrated calves have vulnerable mucosa
- Electrolytes are used to correct and prevent metabolic acidosis



DIRECTIONS FOR USE

Mix entire 4 oz. packet (113.3 g) of Accel RS into 2 quarts warm water. Stir until dissolved. For scouring calves or calves that are exhibiting early signs of stress or sickness, feed 2 quarts of Accel RS solution one to two times daily between pasteurized waste milk (PWM) or milk replacer feedings. Continue feeding for three consecutive days.

Do not eliminate PWM or milk replacer during this time.
Repeat if symptoms persist.

BATCH MIXING

Number of Calves Fed	Volume of Accel RS	Volume of Water
1	1 scoop*	2 quarts
4	2¾ cups**	2 gallons/8 quarts
8	5½ cups**	4 gallons/16 quarts

*Enclosed scoop

**Standard 1 cup measuring cup



YOUR SUCCESS *Our Passion.*

(614) 873-4683 ♦ www.selectsires.com

Buyer assumes all responsibility for use, storage and handling of this product. Select Sires Inc. makes no claims or warranties, expressed or implied. ©Build A Better Calf, Your Success Our Passion. and the Select Sires logo are registered trademarks of Select Sires Inc., Plain City, Ohio. Manufactured for Select Sires Inc., 11740 U.S. 42 N, Plain City, OH 43064. Updated 01/13/25.