

# MAY GFORCE™ SIRES

## CRAZY TRAIN-PP

7H017077 S-S-I C CRAZY TRAIN-PP-ET  
8403253835980 99% RHA-I TR PP TC TM TL TD TE  
DMS: 561,456 aAa: 342 B-Casein: A2A2 K-Casein: BB

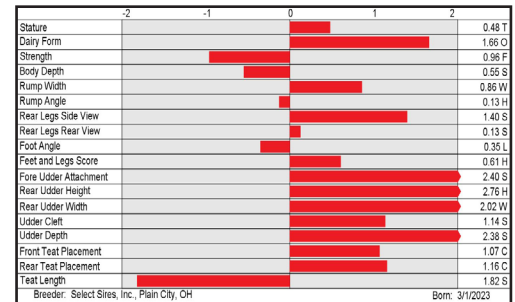


CDCB-S Genomic Evaluation			(04/24)	
Milk	+1,176	79%R	Net Merit (73%R)	+\$931
Protein	+0.04%	+48	DWPS*	+\$1,084
Fat	+0.08%	+68	Cheese Merit	+\$942

CDCB-S/HA Genomic Evaluation			(04/24)	
Type	+1.76	UDC +2.15	FLC +0.34	BWC -1.26
			77%R	GTPI† +2900

Health and Fertility			(04/24)	
SCS	2.81	75%R	MAS +2.0	70%R
LIV	+2.9	71%R	DPR +0.4	73%R
CCR	+2.3	73%R	FI +0.8	73%R
WT\$	+\$207		DCE 2.1%	57%R
CW\$	+\$36		HHP\$*	+\$913
			PL +7.2	74%R
			HCR +0.9	72%R
			SCE 2.6%	63%R
			DSB 4.1%	55%R

S: Penn-England CHEW-P-ET  
D: S-S-I Bedrock 11283 3022-ET  
MGS: S-S-I Limlight BEDROCK-PP-ET  
MGD: La-Ca-De-Le SSI 11283-ET  
MGGS: Pine-Tree CW LEGACY-ET



## SOUDAN

7H017110 T-SPRUCE LETCHW SOUDAN-ET  
8403260815045 99% RHA-I TR TP TC TM TL TD TE  
DMS: 246,126 B-Casein: A2A2 K-Casein: AB

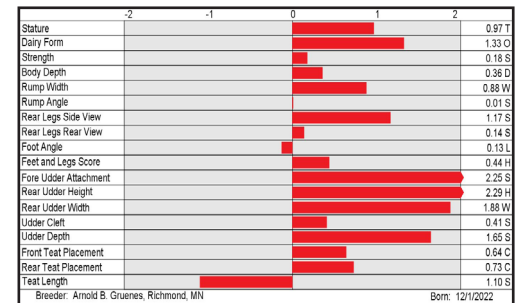


CDCB-S Genomic Evaluation			(04/24)	
Milk	+759	79%R	Net Merit (73%R)	+\$1,186
Protein	+0.13%	+61	DWPS*	+\$1,126
Fat	+0.33%	+124	Cheese Merit	+\$1,216

CDCB-S/HA Genomic Evaluation			(04/24)	
Type	+1.55	UDC +1.64	FLC +0.12	BWC -0.09
			78%R	GTPI† +3166

Health and Fertility			(04/24)	
SCS	2.62	75%R	MAS +4.2	70%R
LIV	+2.9	71%R	DPR -0.1	74%R
CCR	+1.7	74%R	FI +0.7	74%R
WT\$	+\$17		DCE 2.8%	57%R
CW\$	-\$37		HHP\$*	+\$1,291
			PL +6.3	74%R
			HCR +1.7	72%R
			SCE 2.5%	63%R
			DSB 4.8%	55%R

S: Aurora LETCHWORTH-ET  
D: T-Spruce Crusher 16744-ET  
MGS: Plain-Knoll CRUSHER-ET  
MGD: T-Spruce Lionel 13196-ET (GP-83-DOM)  
MGGS: Mr T-Spruce Frazz LIONEL-ET



**YOUR SUCCESS** *Our Passion.*

Phone: (614) 873-4683 ♦ [www.selectsires.com](http://www.selectsires.com)

= gender SELECTED™

= Mastitis ResistantPRO™

= FeedPRO™

\*Mastitis ResistantPRO, FeedPRO, HHP\$, Your Success Our Passion, and the Select Sires logo are registered trademarks of Select Sires Inc., Plain City, OH. TPI is a registered trademark of Holstein Association USA. DWPS and WT\$ are registered trademarks of Zoetis Inc., and its affiliates and/or its licensors. Zoetis wellness values are based on April 2024 Zoetis data. CW\$ is a trademark of Zoetis Inc., and its affiliates and/or its licensors. GForce and gender SELECTED are trademarks of Select Sires Inc. All gender SELECTED semen is processed using Ultraplus™ Technology. Ultraplus is a trademark of STGen LLC.

# MAY GFORCE™ SIRES

## LOCKSMITH

7H017153 TOWNLINEACRE LOCKSMITH-ET  
8403264164224 99% RHA-I TR TP TC TM TL TD TE  
DMS: 126,246 aAa: 312 B-Casein: A2A2 K-Casein: BB



CDCB-S Genomic Evaluation		(04/24)	
Milk	+539 79%R	Net Merit (73%R)	+\$399
Protein	+0.05% +32	DWPS*	+\$363
Fat	+0.08% +44	Cheese Merit	+\$410



CDCB-S/HA Genomic Evaluation		(04/24)	
Type	+3.54	UDC	+2.63
FLC	+1.68	BWC	+2.23
78%R		GTP1*	+2653

Health and Fertility		(04/24)	
SCS	2.90 75%R	MAS	+0.6 70%R
LIV	-1.2 71%R	DPR	-0.3 74%R
CCR	+0.3 74%R	FI	-0.3 74%R
WT\$*	+\$17	DCE	2.5% 57%R
CWS*	-\$14	HHP\$*	+\$538
PL	+2.9 75%R	HCR	+0.9 72%R
SCE	3.2% 63%R	DSB	5.5% 55%R



TOWNLINEACRE KING DOC LENA (EX-93-EX-MS)  
Dam of LOCKSMITH

S: Siemers Rz PAZZLE 34954-ET  
D: Townlineacre King Doc Lena (EX-93-EX-MS)  
MGS: Woodcrest King DOC (EX-90)  
MGD: Golden-Oaks Lockn Load-ET (VG-85-VG-MS)  
MGGs: Val-Bisson Doorman (VG-87)

	-2	-1	0	1	2	
Stature						3.19T
Dairy Form						2.09O
Strength						2.56S
Body Depth						2.62D
Rump Width						2.52W
Rump Angle						0.07S
Rear Legs Side View						0.09P
Rear Legs Rear View						2.45S
Foot Angle						2.87S
Feet and Legs Score						2.11H
Fore Udder Attachment						3.52S
Rear Udder Height						3.84H
Rear Udder Width						3.88W
Udder Cleft						2.00S
Udder Depth						2.38S
Front Test Placement						1.71C
Rear Test Placement						1.91C
Test Length						0.46L

Breeder: Townline Acres, Binamwood, WI Born: 1/28/2023

## REVERIE-P

7H017255 AURORA REVERIE-P-ET  
8403259995034 99% RHA-I TR PC TC TM TV TL TY TD TE  
DMS: 561,456 aAa: 342 B-Casein: A2A2 K-Casein: BB



CDCB-S Genomic Evaluation		(04/24)	
Milk	+766 80%R	Net Merit (73%R)	+\$1,013
Protein	+0.13% +60	DWPS*	+\$1,138
Fat	+0.30% +116	Cheese Merit	+\$1,038



CDCB-S/HA Genomic Evaluation		(04/24)	
Type	+1.76	UDC	+2.08
FLC	+1.56	BWC	+0.47
79%R		GTP1*	+3100

Health and Fertility		(04/24)	
SCS	2.81 75%R	MAS	+1.5 70%R
LIV	+1.6 71%R	DPR	-0.2 74%R
CCR	+1.0 74%R	FI	-0.1 74%R
WT\$*	+\$141	DCE	2.3% 57%R
CWS*	-\$15	HHP\$*	+\$1,117
PL	+4.5 74%R	HCR	+0.8 72%R
SCE	2.4% 63%R	DSB	5.0% 55%R



AURORA PERFECT 23739-ET (GP-80)  
Dam of REVERIE-P

S: Penn-England CHEW-P-ET  
D: Aurora Perfect 23739-ET (GP-80)  
MGS: Siemers Rengd PERFECT-ET  
MGD: Aurora Rapid 21849-ET (VG-85-VG-MS-DOM)  
MGGs: ST Gen R-Haze Rapid-ET

	-2	-1	0	1	2	
Stature						0.12T
Dairy Form						0.55O
Strength						0.59S
Body Depth						0.14D
Rump Width						1.56W
Rump Angle						1.37H
Rear Legs Side View						0.08S
Rear Legs Rear View						2.15S
Foot Angle						0.97S
Feet and Legs Score						1.31H
Fore Udder Attachment						1.91S
Rear Udder Height						2.81H
Rear Udder Width						2.70W
Udder Cleft						1.10S
Udder Depth						1.00S
Front Test Placement						0.66C
Rear Test Placement						1.05C
Test Length						0.08S

Breeder: Aurora Ridge Dairy LLC, Aurora, NY Born: 2/11/2023



**YOUR SUCCESS** *Our Passion.*

Phone: (614) 873-4683 ♦ [www.selectsires.com](http://www.selectsires.com)



\*FeedPRO, RobotPRO, HHP\$, Your Success Our Passion, and the Select Sires logo are registered trademarks of Select Sires Inc., Plain City, OH. TPI is a registered trademark of Holstein Association USA. DWPS\* and WT\$ are registered trademarks of Zoetis Inc., and its affiliates and/or its licensors. Zoetis wellness values are based on April 2024 Zoetis data. "CWS" is a trademark of Zoetis Inc., and its affiliates and/or its licensors. Showcase, GForce and gender SELECTED are trademarks of Select Sires Inc. All gender SELECTED semen is processed using Ultraplus™ Technology. Ultraplus is a trademark of STGen LLC.

# MAY GFORCE™ SIRES

## GABE

7H017267 WELCOME GABE 5300-ET  
8403245603431 99% RHA-I TR TP TC TM TV TL TY TD TE  
DMS: 561,135 aAa: 423 B-Casein: A1A2 K-Casein: AA

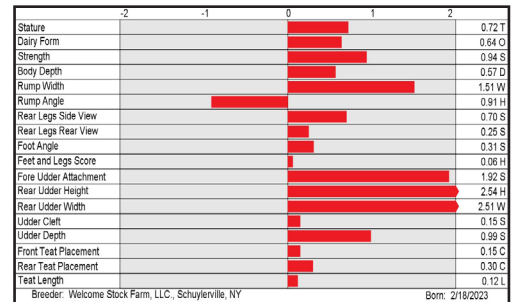


CDCB-S Genomic Evaluation			(04/24)	
Milk	+1,362	80%R	Net Merit (73%R)	+\$1,102
Protein	+0.09%	+70	DWPS*	+\$1,090
Fat	+0.25%	+125	Cheese Merit	+\$1,124

CDCB-S/HA Genomic Evaluation						(04/24)				
Type	+1.45	UDC	+1.68	FLC	-0.06	BWC	+0.84	79%R	GTPI*	+3154

Health and Fertility			(04/24)					
SCS	2.74	75%R	MAS	+2.6	70%R	PL	+5.2	74%R
LIV	+1.3	71%R	DPR	-0.3	74%R	HCR	+3.7	72%R
CCR	+2.1	74%R	FI	+0.7	74%R	SCE	2.5%	63%R
WT\$*	+\$6		DCE	3.0%	57%R	DSB	5.5%	56%R
CW\$*	-\$13		HHP\$*	+\$1,306				

S: Wilra S-S-I Gd WAR GEAR-ET  
D: Welcome Perfect Gabriele-ET (GP-83)  
MGS: Siemers Rengd PARFECT-ET  
MGD: Welcome Rome Gabrielle-ET (GP-83)  
MGGS: De-Su Frazzld ROME 14192-ET



## MERRILEE

14H017014 BADGER SIEMERS MERRILEE-ET  
8403257573241 99% RHA-I TR TP TC TM TL TD TE  
DMS: 456,345 aAa: 354 B-Casein: A1A2 K-Casein: BB



CDCB-S Genomic Evaluation			(04/24)	
Milk	+41	80%R	Net Merit (73%R)	+\$1,175
Protein	+0.17%	+48	DWPS*	+\$1,420
Fat	+0.46%	+132	Cheese Merit	+\$1,208

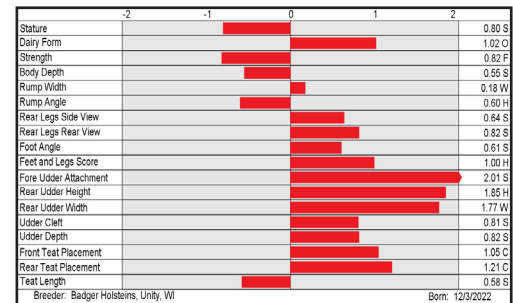
CDCB-S/HA Genomic Evaluation						(04/24)				
Type	+1.05	UDC	+1.77	FLC	+1.19	BWC	-1.27	78%R	GTPI*	+3139

Health and Fertility			(04/24)					
SCS	2.68	76%R	MAS	+4.0	70%R	PL	+4.8	74%R
LIV	+1.4	71%R	DPR	+0.4	74%R	HCR	+0.9	72%R
CCR	+1.5	74%R	FI	+0.7	74%R	SCE	1.7%	63%R
WT\$*	+\$222		DCE	1.9%	57%R	DSB	4.5%	55%R
CW\$*	+\$2		HHP\$*	+\$1,238				



BADGER SSI OUT 7423 3192-ET (VG-88-EX-MS)  
Third dam of MERRILEE

S: Ladys-Manor Overdo-ET  
D: Badger SSI Conway 17333-ET  
MGS: Sandy-Valley R CONWAY-ET  
MGD: Horsens S-S-I 3192 16136-ET  
MGGS: A-S-Cannon Frzzld BIG AL-ET



- =gender SELECTED\*
- = Mastitis ResistantPRO\*
- = FeedPRO\*
- = RobotPRO\*
- = GrazingPRO\*

## YOUR SUCCESS *Our Passion.*

Phone: (614) 873-4683 ♦ [www.selectsires.com](http://www.selectsires.com)

\*Mastitis ResistantPRO, FeedPRO, RobotPRO, GrazingPRO, HHP\$, Your Success Our Passion, and the Select Sires logo are registered trademarks of Select Sires Inc., Plain City, OH. TPI is a registered trademark of Holstein Association USA. DWPS\$ and WT\$ are registered trademarks of Zoetis Inc., and its affiliates and/or its licensors. Zoetis wellness values are based on April 2024 Zoetis data. \*CW\$ is a trademark of Zoetis Inc., and its affiliates and/or its licensors. GForce and gender SELECTED are trademarks of Select Sires Inc. All gender SELECTED semen is processed using Ultraplus™ Technology. Ultraplus is a trademark of STGen LLC.



# MAY GFORCE™ SIRES

## BATU

14H017116 T-SPRUCE KAHN BATU-ET  
8403260815121 99% RHA-I TR TP TC TM TL TD TE  
DMS: 234,345 aAa: 543 B-Casein: A2A2 K-Casein: AB



CDCB-S Genomic Evaluation			(04/24)	
Milk	+1,645	79%R	Net Merit (73%R)	+\$1,221
Protein	+0.09%	+78	DWPS*	+\$1,221
Fat	+0.27%	+143	Cheese Merit	+\$1,239



Accelerated Genetics

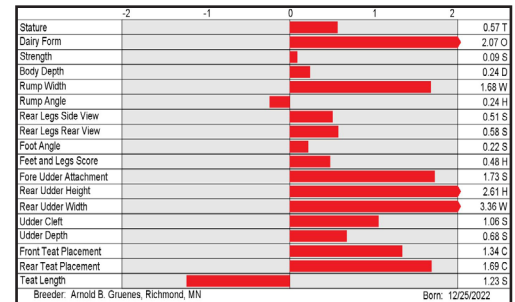


ENDCO YODER L7933 9839-ET (VG-86-VG-MS)  
Third dam of BATU

S: Wilra Gameday KAHN-ET  
D: T-Spruce Perfect 16760-ET  
MGS: Siemers Rengd PARFECT-ET  
MGD: Mercedes Lionel Lass-ET  
MGGS: Mr T-Spruce Frazz LIONEL-ET

CDCB-S/HA Genomic Evaluation						(04/24)				
Type	+1.62	UDC	+1.91	FLC	+0.39	BWC	-0.47	78%R	GTPI†	+3215

Health and Fertility			(04/24)					
SCS	2.86	75%R	MAS	+2.0	70%R	PL	+4.9	74%R
LIV	-0.7	71%R	DPR	-2.6	74%R	HCR	+2.2	72%R
CCR	-0.1	74%R	FI	-1.1	74%R	SCE	2.1%	63%R
WT\$*	-\$32		DCE	2.6%	57%R	DSB	5.0%	56%R
CW\$*	-\$49		HHP\$*	+\$1,273				



## SYMMETRY

14H017198 BLUMENFELD SYMMETRY  
8403252784073 99% RHA-I TR TP TC TM TL TD TE  
DMS: 234,123 aAa: 423 B-Casein: A2A2 K-Casein: AB



CDCB-S Genomic Evaluation			(04/24)	
Milk	+1,868	82%R	Net Merit (75%R)	+\$1,149
Protein	+0.06%	+75	DWPS*	+\$1,175
Fat	+0.24%	+142	Cheese Merit	+\$1,164



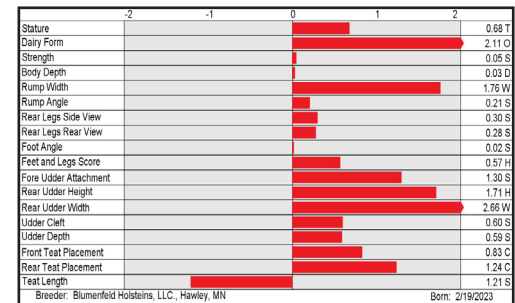
Accelerated Genetics



S: Mr T-Spruce Frazz LIONEL-ET  
D: Blumenfeld Fortnite 7615-ET (GP-83)  
MGS: Peak Fortnite-ET  
MGD: Blumenfeld Renegade 6623-ET  
MGGS: S-S-I PR RENEGADE-ET

CDCB-S/HA Genomic Evaluation						(04/24)				
Type	+1.29	UDC	+1.33	FLC	+0.36	BWC	-0.50	81%R	GTPI†	+3147

Health and Fertility			(04/24)					
SCS	2.77	78%R	MAS	+1.0	74%R	PL	+4.2	77%R
LIV	-1.0	74%R	DPR	-1.9	77%R	HCR	+2.3	75%R
CCR	+0.9	77%R	FI	-0.7	77%R	SCE	2.2%	63%R
WT\$*	+\$13		DCE	2.1%	61%R	DSB	5.1%	60%R
CW\$*	-\$65		HHP\$*	+\$1,181				



**YOUR SUCCESS** *Our Passion.*

Phone: (614) 873-4683 ♦ [www.selectsires.com](http://www.selectsires.com)



# MAY GFORCE™ SIRES

## HIJACK

250H017165 DUCKETT PAZZLE HIJACK-ET  
8403260843040 99% RHA-I TR TP TC TM TL TD TE  
DMS: 123,135 aAa: 312 B-Casein: A2A2 K-Casein: AB



CDCB-S Genomic Evaluation		(04/24)	
Milk	+1,288 80%R	Net Merit (73%R)	+\$827
Protein	+0.07% +61	DWPS*	+\$591
Fat	+0.16% +96	Cheese Merit	+\$842



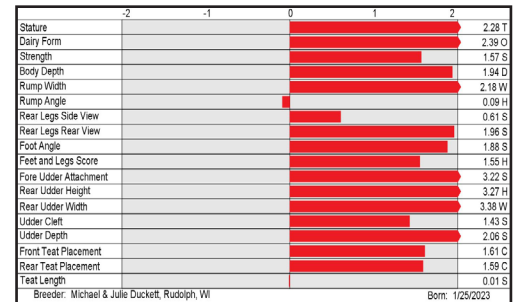
CDCB-S/HA Genomic Evaluation		(04/24)	
Type	+3.00	UDC	+2.42
FLC	+1.26	BWC	+1.06
78%R		GTPI*	+2995

Health and Fertility		(04/24)	
SCS	2.88 76%R	MAS	+1.1 71%R
LIV	-2.8 71%R	DPR	-1.1 74%R
CCR	+0.4 74%R	FI	-0.6 74%R
WT\$	-\$228	DCE	1.8% 57%R
CW\$	-\$59	HHP\$*	+\$970
PL	+3.3 75%R	HCR	+1.5 72%R
SCE	2.4% 63%R	DSB	4.2% 56%R



S: Siemers Rz PAZZLE 34954-ET  
D: Duckett Conway Hope-ET (VG-85)  
MGS: Sandy-Valley R CONWAY-ET  
MGD: S-S-I Doc Have Not 8784-ET (EX-96-EX-MS-DOM)  
MGGS: Woodcrest King DOC (EX-90)

S-S-I DOC HAVE NOT 8784-ET (EX-96-EX-MS-DOM)  
Grandam of HIJACK



## HADER

250H017215 DUCKETT HAYK HADER-ET  
8403260843021 99% RHA-I TR TP TC TM TL TD TE  
DMS: 123 aAa: 234 B-Casein: A1A2 K-Casein: BB



CDCB-S Genomic Evaluation		(04/24)	
Milk	+1,452 79%R	Net Merit (73%R)	+\$941
Protein	+0.10% +74	DWPS*	+\$811
Fat	+0.14% +97	Cheese Merit	+\$964



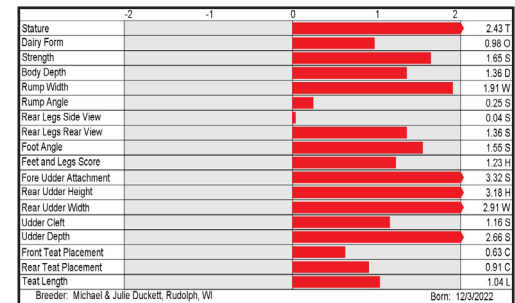
CDCB-S/HA Genomic Evaluation		(04/24)	
Type	+2.59	UDC	+2.28
FLC	+0.83	BWC	+1.72
79%R		GTPI*	+3107

Health and Fertility		(04/24)	
SCS	2.70 75%R	MAS	+4.3 70%R
LIV	-0.7 71%R	DPR	-0.8 74%R
CCR	+0.9 74%R	FI	-0.2 74%R
WT\$	-\$49	DCE	2.4% 57%R
CW\$	-\$48	HHP\$*	+\$1,251
PL	+4.8 74%R	HCR	-0.3 72%R
SCE	2.6% 63%R	DSB	5.1% 55%R



S: Welcome-Tel Taos HAYK-ET  
D: Duckett Perfect Hallie-ET (VG-87-VG-MS)  
MGS: Siemers Rengd PERFECT-ET  
MGD: S-S-I Doc Have Not 8784-ET (EX-96-EX-MS-DOM)  
MGGS: Woodcrest King DOC (EX-90)

DUCKETT PERFECT HALLIE-ET (VG-87-VG-MS)  
Dam of HADER



**YOUR SUCCESS** *Our Passion.*

Phone: (614) 873-4683 ♦ [www.selectsires.com](http://www.selectsires.com)



\*Mastitis ResistantPRO, HHP\$, Your Success Our Passion, and the Select Sires logo are registered trademarks of Select Sires Inc., Plain City, OH. TPI is a registered trademark of Holstein Association USA. DWPS and WT\$ are registered trademarks of Zoetis Inc., and its affiliates and/or its licensors. Zoetis wellness values are based on April 2024 Zoetis data. \*CW\$ is a trademark of Zoetis Inc., and its affiliates and/or its licensors. Showcase, GForce and gender SELECTED are trademarks of Select Sires Inc. All gender SELECTED semen is processed using Ultraplus™ Technology. Ultraplus is a trademark of STGen LLC.

# MAY GFORCE™ SIRES

## NONCHALANT

250H017261 OCD LETCH NONCHALANT-ET  
8403251665821 99% RHA-I TR TP TC TM TL TD TE  
DMS: 123,234 aAa: 234 B-Casein: A2A2 K-Casein: BB



CDCB-S Genomic Evaluation			(04/24)	
Milk	+1,393	79%R	Net Merit (73%R)	+\$1,150
Protein	+0.10%	+73	DWPs*	+\$1,188
Fat	+0.28%	+136	Cheese Merit	+\$1,173



CDCB-S/HA Genomic Evaluation						(04/24)				
Type	+2.57	UDC	+2.18	FLC	+0.29	BWC	+0.12	79%R	GTPI <sup>1</sup>	+3192

Health and Fertility			(04/24)					
SCS	2.75	75%R	MAS	+3.0	70%R	PL	+4.6	74%R
LIV	+0.0	71%R	DPR	-2.7	74%R	HCR	+0.3	72%R
CCR	-0.9	74%R	FI	-1.8	74%R	SCE	2.6%	63%R
WT\$*	+\$65		DCE	2.7%	57%R	DSB	4.9%	55%R
CW\$*	-\$61		HHP\$*	+\$1,267				



PINE-TREE MONICA PLANETA-ET (VG-86-VG-MS-GMD-DOM)  
Fifth Dam of NONCHALANT

S: Aurora LETCHWORTH-ET  
D: OCD Gamedy Nolimit 64649-ET (VG-85-VG-MS)  
MGS: RMD-Dotterer SSI GAMEDAY-ET  
MGD: Pine-Tree 5976 Hero 8551-ET (VG-85-VG-MS)  
MGGS: Pine-Tree Heroic-ET

	-2	-1	0	1	2	
Stature						2.12T
Dairy Form						2.66O
Strength						0.69S
Body Depth						1.18D
Rump Width						1.69W
Rump Angle						0.66S
Rear Legs Side View						1.87S
Rear Legs Rear View						0.32S
Foot Angle						0.34S
Feet and Legs Score						0.94H
Fore Udder Attachment						2.45S
Rear Udder Height						3.26H
Rear Udder Width						3.28W
Udder Cleft						1.01S
Udder Depth						2.03S
Front Test Placement						1.36C
Rear Test Placement						0.97C
Test Length						0.97S

Breeder: Oakfield Corners Dairy, Oakfield, NY Born: 11/2/2023

## FORREAL

7JE2258 DUPAT UNCOMMON FORREAL-ET  
8403242639212 BBR 100 JH1F JNSF  
B-Casein: A2A2 K-Casein: BB



CDCB-S Genomic Evaluation			(04/24)	
Milk	+922	76%R	Net Merit (73%R)	+\$583
Protein	+0.05%	+46	Cheese Merit	+\$595
Fat	+0.09%	+65	CFP	+111



CDCB-S/AJCA Genomic Evaluation			(04/24)	
Type	+1.7	79%R	+20.5JUI*	GJPI* +155

Health and Fertility			(04/24)					
SCS	2.91	75%R	PL	+2.4	72%R	LIV	+1.3	61%R
DPR	-0.5	69%R	HCR	+1.8	59%R	CCR	+0.6	69%R
DWPs*	+\$782		WT\$*	-\$3		CW\$**	+\$64	
M FVR	76	29%R	MAS	-1.2	58%R	ZMAS	100	38%R
HHP\$*	+\$676							

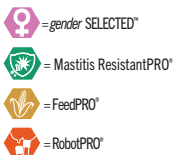


DUPAT FEARLESS 15549-ET (E-93%)  
Dam of FORREAL

S: Valsigna Gislev UNCOMMON-ET  
D: Dupat Fearless 15549-ET (E-93%)  
MGS: Hi-Land Paul FEARLESS  
MGD: Dupat Sparky 2639 (VG-87%)  
MGGS: Mainstream latola Sparky

	-2	-1	0	1	2	
Stature						1.8T
Strength						0.9S
Dairy Form						2.1O
Rump Angle						1.3H
Rump Width						1.0W
Rear Legs Side View						0.5P
Foot Angle						1.4S
Fore Udder Attachment						1.7S
Rear Udder Height						2.1H
Rear Udder Width						1.5W
Udder Cleft						1.0S
Udder Depth						1.5S
Front Test Placement						0.9C
Test Length						0.3S
Rear Test Placement						0.8C
Rear Test Side View						0.3B

Breeder: Wickstrom Jersey Farms, Inc., Himlar, CA Born: 11/17/2022




**YOUR SUCCESS** *Our Passion.*

Phone: (614) 873-4683 ♦ [www.selectsires.com](http://www.selectsires.com)

\*Mastitis ResistantPRO, FeedPRO, RobotPRO, HHP\$, Your Success Our Passion. and the Select Sires logo are registered trademarks of Select Sires Inc., Plain City, OH. TPI is a registered trademark of Holstein Association USA. DWPs and WT\$ are registered trademarks of Zoetis Inc., and its affiliates and/or its licensors. Zoetis wellness values are based on April 2024 Zoetis data. \*\*CW\$ is a trademark of Zoetis Inc., and its affiliates and/or its licensors. JPI and JUI are trademarks of the American Jersey Cattle Association. GForce and gender SELECTED are trademarks of Select Sires Inc. All gender SELECTED semen is processed using Ultraplus™ Technology. Ultraplus is a trademark of STGen LLC.

# MAY GFORCE™ SIRES

## JX SLAM {6}

507JE2236 JX S-S-I COBLESKILL BEST GRANDSLAM {6}-ET   
 8403248211492 BBR 100 JH1F JNSF  
 DMS: 234,246 aAa: 435 B-Casein: A2A2 K-Casein: BB



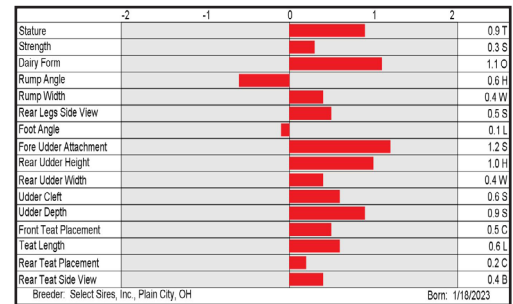
CDCB-S Genomic Evaluation			(04/24)	
Milk	+1,022	75%R	Net Merit (72%R)	+\$792
Protein	+0.05%	+48	Cheese Merit	+\$806
Fat	+0.14%	+80	CFP	+128

CDCB-S/AJCA Genomic Evaluation			(04/24)	
Type	+0.9	78%R	+15.2JUI*	GJPI* +203

Health and Fertility			(04/24)	
SCS	2.78	74%R	PL	+5.6 71%R
DPR	+0.4	69%R	LIV	+0.8 61%R
DWP\$*	+\$942		HCR	+2.8 59%R
M FVR	91	29%R	CCR	+1.9 69%R
HHP\$*	+\$862		WT\$*	+\$87
			CW\$™	-\$13
			MAS	-1.2 57%R
			ZMAS	104 36%R

**AVAILABLE ONLY IN SEXED SEMEN**

S: JX Victory Caliban BESTBALL {5}-ET  
 D: Four J Thrasher 21797 {5} (VG-82%)  
 MGS: JX CDF JLS Pilgrim THRASHER {6}-ET  
 MGD: Four J Listowel 12382 {4}-P (VG-83%)  
 MGGS: Hillview Listowel-P



**YOUR SUCCESS** *Our Passion.*

Phone: (614) 873-4683 ♦ [www.selectsires.com](http://www.selectsires.com)

\*FeedPRO, RobotPRO, GrazingPRO, HHP\$, Your Success Our Passion, and the Select Sires logo are registered trademarks of Select Sires Inc., Plain City, OH. DWP\$ and WT\$ are registered trademarks of Zoetis Inc., and its affiliates and/or its licensors. Zoetis wellness values are based on April 2024 Zoetis data. "CW\$" is a trademark of Zoetis Inc., and its affiliates and/or its licensors. JPI and JUI are trademarks of the American Jersey Cattle Association. GForce and gender SELECTED are trademarks of Select Sires Inc. All gender SELECTED semen is processed using Ultraplus™ Technology. Ultraplus is a trademark of STGen LLC. Limitations and Conditions of Sale: gender SELECTED semen shall be used only for the single insemination of one female bovine during natural ovulation with the intent to produce a single offspring unless specifically approved on an individual customer basis by Sexing Technologies in writing. As a condition of purchasing gender SELECTED semen, the purchaser agrees that gender SELECTED semen will not be reverse sorted or re-sorted unless specifically permitted, in advance, on a case-by-case basis by Select Sires in writing. Select Sires intends to monitor the use of the gender SELECTED semen and vigorously enforce these restrictions on use. Please see <http://www.selectsires.com/designations/genderselected.html> for additional details.