

MARCH GFORCE™ SIRES

PATTLE

7H017566 SIEMERS HULU PATTLE-ET

8403267430054 99% RHA-I RC TP TC TM TL TD TE
DMS: 234,246 aAa: 342 B-Casein: A2A2 K-Casein: BB

CDCB-S Genomic Evaluation			(12/24)	
Milk	+1,159	81%R	Net Merit (75%R)	+\$801
Protein	+0.11%	+67	DWPS*	+\$819
Fat	+0.08%	+66	Cheese Merit	+\$820

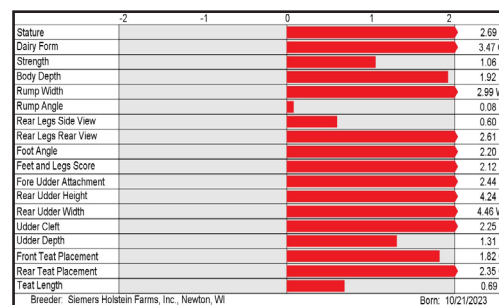
CDCB-S/HA Genomic Evaluation						(12/24)				
Type	+3.05	UDC	+2.54	FLC	+1.79	BWC	+0.41	80%R	GTPI ¹	+2954

Health and Fertility			(12/24)					
SCS	2.95	77%R	MAS	+1.6	72%R	PL	+3.7	76%R
LIV	-1.1	72%R	DPR	-1.1	76%R	HCR	+1.3	73%R
CCR	+0.0	76%R	FI	-0.2	75%R	SCE	2.3%	62%R
WT\$*	-\$13		DCE	2.0%	57%R	DSB	4.9%	56%R
CW\$*	-\$25		HHP\$*	+\$848				



SIEMERS LMDA PARIS 27856-ET (EX-91-EX-MS-GMD-DOM)
Dam of PATTLE

S: Siemers Wolf HULU 37006-ET
D: Siemers Lmda Paris 27856-ET (EX-91-EX-MS-GMD-DOM)
MGS: Farnear Delta-Lambda-ET
MGD: Siemers Denver Paris-ET (EX-91-EX-MS-GMD-DOM)
MGGS: Mr Mogul Denver 1426-ET



ENCHANTED

7H017599 S-S-I HOWITZER ENCHANTED-ET

8403274170917 99% RHA-I TR TP TC TM TL TD TE
DMS: 234,345 aAa: 435 B-Casein: A1A2 K-Casein: BB

CDCB-S Genomic Evaluation			(12/24)	
Milk	+1,033	79%R	Net Merit (73%R)	+\$1,210
Protein	+0.16%	+76	DWPS*	+\$1,074
Fat	+0.37%	+138	Cheese Merit	+\$1,237

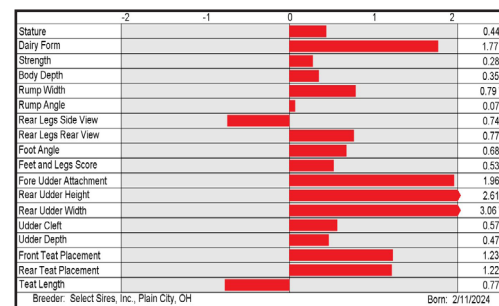
CDCB-S/HA Genomic Evaluation						(12/24)				
Type	+1.58	UDC	+1.85	FLC	+0.52	BWC	-0.37	78%R	GTPI ¹	+3232

Health and Fertility			(12/24)					
SCS	2.89	75%R	MAS	+0.3	70%R	PL	+4.8	74%R
LIV	-0.1	71%R	DPR	-0.9	73%R	HCR	+2.8	72%R
CCR	+0.4	73%R	FI	+0.6	73%R	SCE	2.1%	62%R
WT\$*	-\$214		DCE	2.7%	57%R	DSB	4.7%	55%R
CW\$*	+\$28		HHP\$*	+\$1,187				



T-SPRUCE SSI 13196 1852-ET (VG-85-VG-MS-DOM)
Grandam of ENCHANTED

S: Plain-Knoll Hck HOWITZER-ET
D: S-S-I Overdo 1852 4596-ET
MGS: Ladys-Manor Overdo-ET
MGD: T-Spruce SSI 13196 1852-ET (VG-85-VG-MS-DOM)
MGGS: Sandy-Valley R CONWAY-ET



YOUR SUCCESS *Our Passion.*

Phone: (614) 873-4683 ♦ www.selectsires.com

= gender SELECTED™
 = Showcase™
 = RobotPRO™

*RobotPRO, HHP\$, Your Success Our Passion, and the Select Sires logo are registered trademarks of Select Sires Inc., Plain City, OH. TPI is a registered trademark of Holstein Association USA. DWPS and WT\$ are registered trademarks of Zoetis Inc., and its affiliates and/or its licensors. Zoetis wellness values are based on February 2025 Zoetis data. *CW\$ is a trademark of Zoetis Inc., and its affiliates and/or its licensors. GForce, Showcase and gender SELECTED are trademarks of Select Sires Inc. All gender SELECTED semen is processed using Ultraplus™ Technology. Ultraplus is a trademark of STGen LLC. Evaluations for non-conformation traits are Powered by CDCB®.

MARCH GFORCE™ SIRES

SURCHARGE-P

7H017669 T-SPRUCE SURCHARGE-P-ET
 8403265763593 99% RHA-I TR PC TC TM TL TD TE
 DMS: 234,246 aAa: 423 B-Casein: A1A2 K-Casein: BB



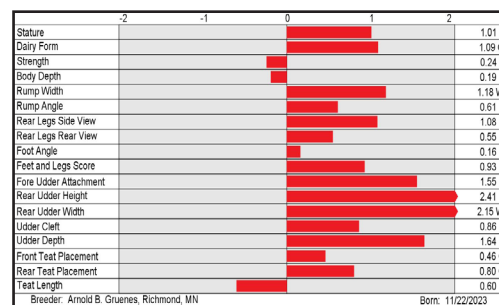
CDCB-S Genomic Evaluation			(12/24)	
Milk	+1,331	80%R	Net Merit (73%R)	+\$1,058
Protein	+0.09%	+65	DWPS*	+\$980
Fat	+0.16%	+94	Cheese Merit	+\$1,073



CDCB-S/HA Genomic Evaluation						(12/24)				
Type	+1.01	UDC	+1.66	FLC	+0.62	BWC	-0.27	78%R	GTPI†	+3046

Health and Fertility			(12/24)					
SCS	2.92	75%R	MAS	+2.8	71%R	PL	+5.1	74%R
LIV	+2.1	72%R	DPR	+0.2	74%R	HCR	+1.9	72%R
CCR	+1.7	74%R	FI	+1.4	74%R	SCE	2.2%	63%R
WT\$*	-\$58		DCE	1.6%	57%R	DSB	3.1%	56%R
CW\$*	-\$36		HHP\$*	+\$1,140				

S: Blumenfeld RECHARGE-ET
 D: T-Spruce Extra-P 16441-ET
 MGS: TTM SS Renegade EXTRA-P-ET
 MGD: T-Spruce Lionel 13196-ET (GP-83-DOM)
 MGGS: Mr T-Spruce Frazz LIONEL-ET



THREAD

7H017673 EILDON-TWEED THREAD-ET
 8403260839076 99% RHA-I TR TP TC TM TL TD TE
 DMS: 234,345 aAa: 423 B-Casein: A2A2 K-Casein: AB



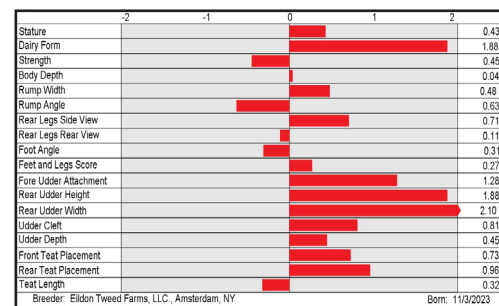
CDCB-S Genomic Evaluation			(12/24)	
Milk	+1,444	79%R	Net Merit (73%R)	+\$1,314
Protein	+0.10%	+73	DWPS*	+\$1,219
Fat	+0.34%	+146	Cheese Merit	+\$1,335



CDCB-S/HA Genomic Evaluation						(12/24)				
Type	+1.30	UDC	+1.35	FLC	+0.06	BWC	-1.02	78%R	GTPI†	+3244

Health and Fertility			(12/24)					
SCS	2.76	75%R	MAS	+2.3	70%R	PL	+5.7	74%R
LIV	+0.8	71%R	DPR	-1.1	74%R	HCR	+2.4	72%R
CCR	-0.5	74%R	FI	+0.3	74%R	SCE	2.0%	63%R
WT\$*	-\$218		DCE	2.0%	57%R	DSB	5.0%	55%R
CW\$*	+\$36		HHP\$*	+\$1,313				

S: Pine-Tree EASTON-ET
 D: Eildon-Tweed Crush Mink 4A3
 MGS: Plain-Knoll CRUSHER-ET
 MGD: Eildon-Tweed Lionel Mink 4A (VG-88-VG-MS-DOM)
 MGGS: Mr T-Spruce Frazz LIONEL-ET



YOUR SUCCESS *Our Passion.*

Phone: (614) 873-4683 ♦ www.selectsires.com



*FeedPRO, RobotPRO, HHP\$, Your Success Our Passion, and the Select Sires logo are registered trademarks of Select Sires Inc., Plain City, OH. TPI is a registered trademark of Holstein Association USA. DWPS and WT\$ are registered trademarks of Zoetis Inc., and its affiliates and/or its licensors. Zoetis wellness values are based on February 2025 Zoetis data. *CW\$ is a trademark of Zoetis Inc., and its affiliates and/or its licensors. GForce and gender SELECTED are trademarks of Select Sires Inc. All gender SELECTED semen is processed using Ultraplus™ Technology. Ultraplus is a trademark of STGen LLC. Evaluations for non-conformation traits are Powered by CDCB®.

MARCH GFORCE™ SIRES

COMPLETE

7H017682 OCD RIMBOT COMPLETE-ET
 8403271294585 99% RHA-I TR TP TC TM TL TD TE
 DMS: 123,135 aAa: 315 B-Casein: A2A2 K-Casein: AB



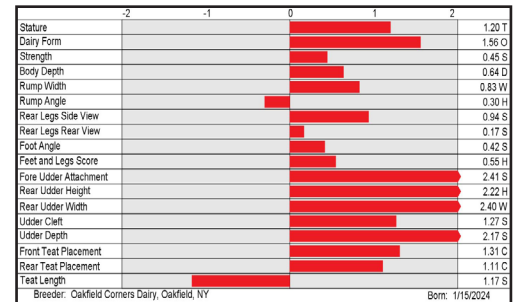
CDCB-S Genomic Evaluation			(12/24)	
Milk	+1,611	79%R	Net Merit (73%R)	+\$1,186
Protein	+0.08%	+72	DWPS*	+\$1,323
Fat	+0.27%	+135	Cheese Merit	+\$1,202



CDCB-S/HA Genomic Evaluation						(12/24)				
Type	+1.86	UDC	+1.95	FLC	+0.20	BWC	+0.06	79%R	GTPI*	+3225

Health and Fertility			(12/24)					
SCS	2.85	75%R	MAS	+2.5	70%R	PL	+5.4	74%R
LIV	+2.4	71%R	DPR	-1.4	73%R	HCR	+2.0	72%R
CCR	-0.1	73%R	FI	-0.2	73%R	SCE	1.8%	63%R
WT\$*	+\$82		DCE	1.3%	57%R	DSB	3.7%	55%R
CW\$*	+\$10		HHP\$*	+\$1,284				

S: Clear-Echo Rix RIMBOT-ET
 D: OCD Engine Cologne 68518-ET (GP-83)
 MGS: Pine-Tree Engineer-ET
 MGD: OCD Captain Cologne 64476-ET (VG-85)
 MGGS: Genosource Captain-ET



RAGNAR-RED

14H017550 TRENT-WAY RAGNAR-RED-ET
 8403261835837 99% RHA-I TP TC TM TL TD TE
 DMS: 234,345 aAa: 435 B-Casein: A2A2 K-Casein: BB



CDCB-S Genomic Evaluation			(12/24)	
Milk	+1,386	80%R	Net Merit (73%R)	+\$965
Protein	+0.02%	+49	DWPS*	+\$1,132
Fat	+0.14%	+91	Cheese Merit	+\$974



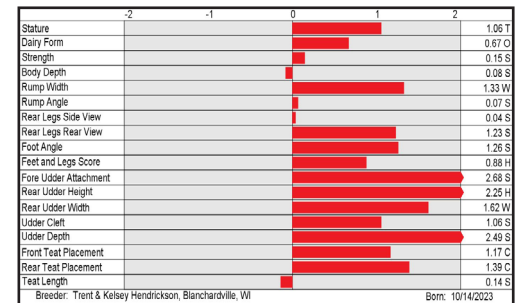
CDCB-S/HA Genomic Evaluation						(12/24)				
Type	+1.62	UDC	+1.98	FLC	+0.81	BWC	+0.26	79%R	GTPI*	+3015

Health and Fertility			(12/24)					
SCS	2.76	75%R	MAS	+4.8	70%R	PL	+5.8	74%R
LIV	+0.7	71%R	DPR	+0.4	74%R	HCR	+3.2	72%R
CCR	+1.7	74%R	FI	+1.5	74%R	SCE	2.6%	61%R
WT\$*	+\$189		DCE	2.3%	57%R	DSB	3.6%	55%R
CW\$*	-\$2		HHP\$*	+\$1,150				



TRENT-WAY RESBIT-ET (VG-86-VG-MS)
 Dam of RAGNAR-RED

S: Melarry FIREBALL-RED-ET
 D: Trent-Way Resbit-ET (VG-86-VG-MS)
 MGS: Siemers Rengd PERFECT-ET
 MGD: Trent-Way-JS Redzone-Red-ET (EX-91-2E-EX-MS)
 MGGS: Holyland SIMPLICITY-P-RC-ET



YOUR SUCCESS *Our Passion.*

Phone: (614) 873-4683 ♦ www.selectsires.com

= gender SELECTED*
 = Mastitis ResistantPRO*

Mastitis ResistantPRO, HHP\$, Your Success Our Passion, and the Select Sires logo are registered trademarks of Select Sires Inc., Plain City, OH. TPI is a registered trademark of Holstein Association USA. DWPS and WT\$ are registered trademarks of Zoetis Inc., and its affiliates and/or its licensors. Zoetis wellness values are based on February 2025 Zoetis data. *CW\$ is a trademark of Zoetis Inc., and its affiliates and/or its licensors. GForce and gender SELECTED are trademarks of Select Sires Inc. All gender SELECTED semen is processed using Ultraplus™ Technology. Ultraplus is a trademark of STGen LLC. Evaluations for non-conformation traits are Powered by CDCB®.

MARCH GFORCE™ SIRES

JX HOYLAKE {5}

7JE2318 JX VICTORY CABAL HOYLAKE {5}
 8403281513729 BBR 100 JH1F JNS-TF
 DMS: 135,345 B-Casein: A2A2 K-Casein: BB



CDCB-S Genomic Evaluation			(12/24)	
Milk	+1,118	75%R	Net Merit (72%R)	+\$682
Protein	-0.02%	+37	Cheese Merit	+\$687
Fat	-0.05%	+44	CFP	+81



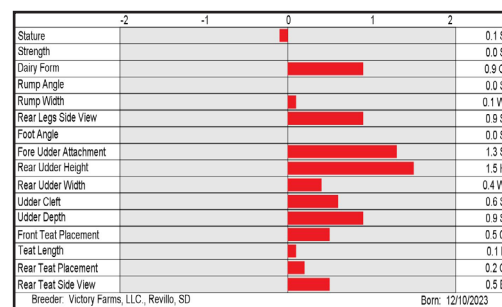
CDCB-S/AJCA Genomic Evaluation			(12/24)	
Type	+1.1	78%R	+16.5JUI*	GJPI* +164

Health and Fertility			(12/24)					
SCS	2.84	74%R	PL	+7.3	71%R	LIV	+1.2	61%R
DPR	+0.7	69%R	HCR	+2.3	58%R	CCR	+1.4	68%R
DWP\$*	+\$793		WT\$*	+\$93		CW\$™	+\$31	
M FVR	102	37%R	MAS	-1.0	57%R	ZMAS	103	35%R
HHP\$*	+\$684							



S: JX Primus Watkins CABAL (5)-ET
 D: JX Victory 55240 Thrasher 60777 {4} (VG-84%)
 MGS: JX CDF JLS Pilgrim THRASHER {6}-ET
 MGD: JX Victory 40965 Stoney 55240 {3} (VG-80%)
 MGGS: JX Spring Creek Marlo STONEY {3}-ET

JX VICTORY 55240 THRASHER 60777 {4} (VG-84%)
 Dam of JX HOYLAKE {5}



JX RAYQUAZA {6}-P

7JE2328 JX MM CHEKHOV RAYQUAZA {6}-P-ET
 8403272841251 BBR 100 JH1F JNS-TF
 DMS: 345,234 B-Casein: A1A2 K-Casein: BB



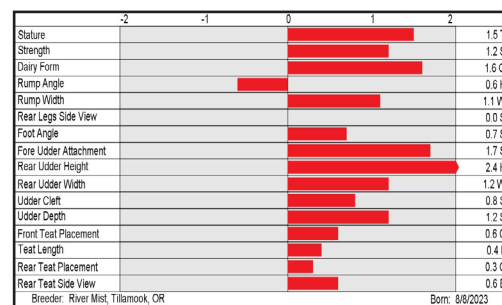
CDCB-S Genomic Evaluation			(12/24)	
Milk	+908	75%R	Net Merit (73%R)	+\$496
Protein	+0.04%	+42	Cheese Merit	+\$502
Fat	+0.10%	+64	CFP	+106



CDCB-S/AJCA Genomic Evaluation			(12/24)	
Type	+1.7	78%R	+20.3JUI*	GJPI* +115

Health and Fertility			(12/24)					
SCS	3.09	74%R	PL	+2.6	72%R	LIV	+0.0	62%R
DPR	-2.0	70%R	HCR	+3.8	62%R	CCR	-1.3	70%R
DWP\$*	+\$901		WT\$*	+\$217		CW\$™	+\$19	
M FVR	90	39%R	MAS	-3.4	59%R	ZMAS	108	36%R
HHP\$*	+\$473							

S: JX Primus Dimitri CHEKHOV {5}-P-ET
 D: JX MM Gallantry River 17009 {5}-ET
 MGS: JX Sexing Gallantry {4}-ET
 MGD: JX RM Viceroy River 11965 {4} (VG-85%)
 MGGS: CDF Viceroy-ET



YOUR SUCCESS *Our Passion.*

Phone: (614) 873-4683 ♦ www.selectsires.com

MARCH GFORCE™ SIRES

JX CARTPATH {6}

507JE2314 JX VICTORY CABAL CARPATH (6)-ET
 8403281513261 BBR 100 JH1F JNS-TF
 DMS: 123,135 B-Casein: A2A2 K-Casein: BB



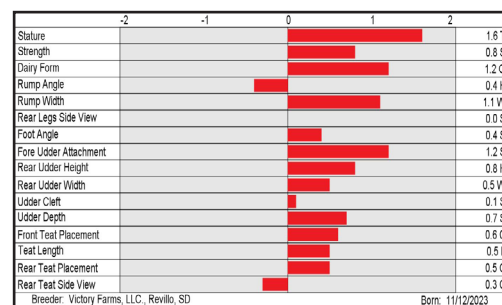
CDCB-S Genomic Evaluation			(12/24)	
Milk	+1,353	74%R	Net Merit (72%R)	+\$654
Protein	-0.01%	+48	Cheese Merit	+\$661
Fat	-0.15%	+36	CFP	+84

CDCB-S/AJCA Genomic Evaluation			(12/24)	
Type	+1.1	77%R	+14.8JUI*	GJPI* +174

Health and Fertility			(12/24)					
SCS	2.85	74%R	PL	+6.8	71%R	LIV	+4.3	61%R
DPR	+1.7	69%R	HCR	+4.1	60%R	CCR	+2.5	69%R
DWP\$*	+\$1,119		WT\$*	+\$247		CW\$™	+\$141	
M FVR	105	36%R	MAS	-1.4	57%R	ZMAS	111	35%R
HHP\$*	+\$784							

AVAILABLE ONLY IN SEXED SEMEN

S: JX Primus Watkins CABAL (5)-ET
 D: JX Victory 58549 Nicklaus 63419 (6)-ET
 MGS: Victory Thrasher NICKLAUS-ET
 MGD: JX Victory 52571 Jiggy 58549 (5) (VG-80%)
 MGGS: JX Kash-In Got Jiggy (6)-ET



DWAYNE-PP

14JE2317 S-S-I VICTORY HAPPY DWAYNE-PP-ET
 8403281513224 BBR 100 JH1F JNS-TF
 DMS: 561,126 aAa: 534 B-Casein: A2A2 K-Casein: BB

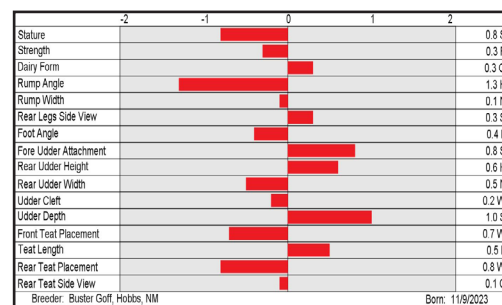


CDCB-S Genomic Evaluation			(12/24)	
Milk	+595	74%R	Net Merit (71%R)	+\$619
Protein	+0.04%	+31	Cheese Merit	+\$630
Fat	+0.07%	+44	CFP	+75

CDCB-S/AJCA Genomic Evaluation			(12/24)	
Type	+0.7	78%R	+12.8JUI*	GJPI* +143

Health and Fertility			(12/24)					
SCS	2.83	74%R	PL	+5.9	71%R	LIV	+2.4	61%R
DPR	+1.1	69%R	HCR	+2.4	61%R	CCR	+1.4	69%R
DWP\$*	+\$824		WT\$*	+\$96		CW\$™	+\$87	
M FVR	94	35%R	MAS	-1.6	57%R	ZMAS	102	34%R
HHP\$*	+\$594							

S: JX Victory S-S-I Goals HAPPY (6)-P-ET
 D: JX Cal-Mart S-S-I Skalski 63615 (6)-P-ET (VG-80%)
 MGS: JX S-S-I Victory L SKALSKI (5)-P-ET
 MGD: Cal-Mart Hjort Jan 9699 (VG-84%)
 MGGS: ISDK VJ Hjortvangs Holmer Hjor



YOUR SUCCESS *Our Passion.*


Phone: (614) 873-4683 ♦ www.selectsires.com

- = gender SELECTED*
- = FeedPRO*
- = RobotPRO*
- = GrazingPRO*

*FeedPRO, RobotPRO, GrazingPRO, HHP\$, Your Success Our Passion, and the Select Sires logo are registered trademarks of Select Sires Inc., Plain City, OH. DWP\$ and WT\$ are registered trademarks of Zoetis Inc., and its affiliates and/or its licensors. Zoetis wellness values are based on February 2025 Zoetis data. *CW\$ is a trademark of Zoetis Inc., and its affiliates and/or its licensors. JPI and JUI are trademarks of the American Jersey Cattle Association. GForce and gender SELECTED are trademarks of Select Sires Inc. All gender SELECTED semen is processed using Ultraplus™ Technology. Ultraplus is a trademark of STGen LLC. Limitations and Conditions of Sale: gender SELECTED semen shall be used only for the single insemination of one female bovine during natural ovulation with the intent to produce a single offspring unless specifically approved on an individual customer basis by Sexing Technologies in writing. As a condition of purchasing gender SELECTED semen, the purchaser agrees that gender SELECTED semen will not be reverse sorted or re-sorted unless specifically permitted, in advance, on a case-by-case basis by Select Sires in writing. Select Sires intends to monitor the use of the gender SELECTED semen and vigorously enforce these restrictions on use. Please see <http://www.selectsires.com/designations/gendersselected.html> for additional details. Evaluations in this report are Powered by CDCB*.

MARCH GFORCE™ SIRES

JX POSTON {5}

14JE2339 JX VICTORY DYNASTAR POSTON {5}-ET 
 8403284496392 BBR 100 JH1F JNS-TF
 DMS: 135,561 aAa: 312 B-Casein: A2A2 K-Casein: BB

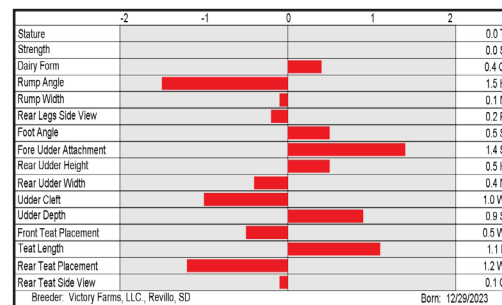


CDCB-S Genomic Evaluation			(12/24)	
Milk	+820	73%R	Net Merit (71%R)	+\$757
Protein	+0.03%	+36	Cheese Merit	+\$765
Fat	+0.12%	+64	CFP	+100


CDCB-S/AJCA Genomic Evaluation			(12/24)	
Type	+0.4	77%R	+12.6JUI*	GJPI* +173

Health and Fertility			(12/24)					
SCS	2.93	73%R	PL	+7.0	71%R	LIV	+2.9	61%R
DPR	+1.1	69%R	HCR	+2.0	59%R	CCR	+1.5	69%R
DWP\$*	+\$1,004		WT\$*	+\$114		CW\$™	+\$121	
M FVR	104	32%R	MAS	-1.5	57%R	ZMAS	103	30%R
HHP\$*	+\$711							

S: JX Valsigna Stoney DYNASTAR {4}-ET
 D: JX Victory 56462 Steno 63709 {4} (VG-80%)
 MGS: ISDK VJ Tudvad Samson Steno
 MGD: JX Victory 46176 Jiggy 56462 {3} (VG-83%)
 MGGS: JX Kash-In Got Jiggy {6}-ET



DUTTON-P

250JE2379 PACIFIC EDGE DIVAS DUTTON-P-ET 
 8403280017018 BBR 100 JH1F JNS-TF
 DMS: 135,123 aAa: 165 B-Casein: A2A2 K-Casein: BB



CDCB-S Genomic Evaluation			(12/24)	
Milk	-583	75%R	Net Merit (73%R)	+\$320
Protein	+0.11%	-1	Cheese Merit	+\$335
Fat	+0.16%	+2	CFP	+1

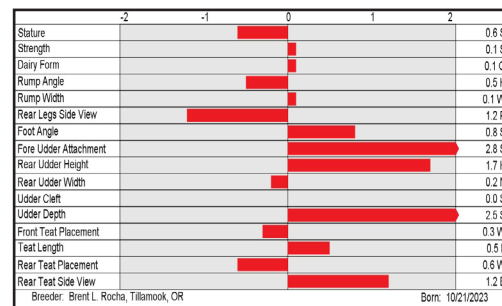
CDCB-S/AJCA Genomic Evaluation			(12/24)	
Type	+1.4	78%R	+22.0JUI*	GJPI* +103

Health and Fertility			(12/24)					
SCS	2.74	74%R	PL	+5.1	71%R	LIV	+2.5	61%R
DPR	+3.1	69%R	HCR	+3.2	60%R	CCR	+4.0	69%R
DWP\$*	+\$443		WT\$*	+\$115		CW\$™	+\$77	
M FVR	95	32%R	MAS	-0.1	58%R	ZMAS	104	33%R
HHP\$*	+\$443							

S: TOG Lamoure 39878-PP-ET
 D: Pacific Edge Premier Diva-ET (E-94%)
 MGS: Hawarden Impuls Premier
 MGD: Ratliff Colton Darien-ET (E-93%)
 MGGS: Chill Action COLTON-ET



PACIFIC EDGE PREMIER DIVA-ET (E-94%)
 Dam of DUTTON-P



YOUR SUCCESS *Our Passion.*

Phone: (614) 873-4683 ♦ www.selectsires.com

-  = gender SELECTED*
-  = FeedPRO*
-  = GrazingPRO*
-  = Showcase*

*FeedPRO, GrazingPRO, HHP\$, Your Success Our Passion. and the Select Sires logo are registered trademarks of Select Sires Inc., Plain City, OH. DWP\$ and WT\$ are registered trademarks of Zoetis Inc., and its affiliates and/or its licensors. Zoetis wellness values are based on February 2025 Zoetis data. *CW\$ is a trademark of Zoetis Inc., and its affiliates and/or its licensors. JPI and JUI are trademarks of the American Jersey Cattle Association. Showcase, GForce and gender SELECTED are trademarks of Select Sires Inc. All gender SELECTED semen is processed using Ultraplus™ Technology. Ultraplus is a trademark of STGen LLC. Evaluations in this report are Powered by CDCB™.