

FEBRUARY GFORCE™ SIRES

SOETEBIER-P

7H017365 S-S-I SHEEPS SOETEBIER-P-ET
 8403272648764 99% RHA-I TR PC TC TM TL TD TE
 DMS: 345,234 aAa: 534 B-Casein: A1A2 K-Casein: AA



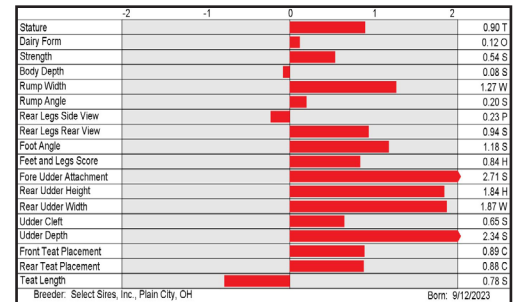
SOETEBIER-P

S: OCD Trooper SHEEPSTER-ET
 D: S-S-I Bedrock-PP 11605 3842 (GP-82)
 MGS: S-S-I Limlight BEDROCK-PP-ET
 MGD: S-S-I Try Me 4273 11605-ET
 MGGS: Melarry Resolve TRY ME-ET

CDCB-S Genomic Evaluation		(12/24)	
Milk	+948 80%R	Net Merit (73%R)	+\$1,098
Protein	+0.12% +63	DWPS*	+\$1,223
Fat	+0.30% +116	Cheese Merit	+\$1,122

CDCB-S/HA Genomic Evaluation		(12/24)								
Type	+1.55	UDC	+1.84	FLC	+0.74	BWC	+0.75	79%R	GTPI ¹	+3152

Health and Fertility		(12/24)			
SCS	2.79 75%R	MAS	+2.2 70%R	PL	+6.0 74%R
LIV	+0.6 71%R	DPR	+0.4 74%R	HCR	+2.4 72%R
CCR	+2.3 74%R	FI	+1.5 74%R	SCE	2.4% 63%R
WTS* +\$60		DCE	2.5% 57%R	DSB	4.7% 54%R
CWS* +\$49		HHP\$*	+\$1,259		



MOSELY-P

7H017501 BADGER SSI R MOSELY-P-ET
 8403272850813 99% RHA-I TR PC TC TM TL TD TE
 DMS: 135,345 aAa: 432 B-Casein: A2A2 K-Casein: BB



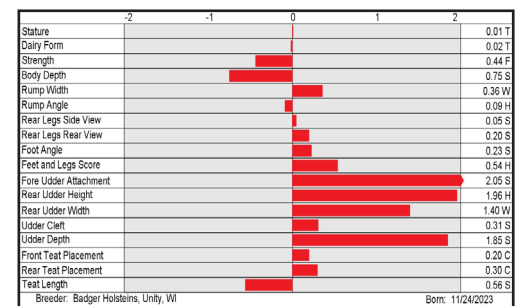
MOSELY-P

S: Blumenfeld RECHARGE-ET
 D: S-S-I BG Bedrock 18065-ET
 MGS: S-S-I Limlight BEDROCK-PP-ET
 MGD: S-S-I Ragnar 12345 12660-ET
 MGGS: Aurora RAGNAR-ET

CDCB-S Genomic Evaluation		(12/24)	
Milk	+1,319 80%R	Net Merit (73%R)	+\$1,108
Protein	+0.10% +69	DWPS*	+\$1,190
Fat	+0.13% +85	Cheese Merit	+\$1,131

CDCB-S/HA Genomic Evaluation		(12/24)								
Type	+0.86	UDC	+1.66	FLC	+0.49	BWC	-0.30	78%R	GTPI ¹	+3085

Health and Fertility		(12/24)			
SCS	2.70 75%R	MAS	+1.8 70%R	PL	+7.1 74%R
LIV	+2.2 71%R	DPR	+0.7 74%R	HCR	+2.7 72%R
CCR	+2.4 74%R	FI	+2.2 74%R	SCE	1.8% 63%R
WTS* +\$91		DCE	2.1% 57%R	DSB	3.5% 55%R
CWS* +\$6		HHP\$*	+\$1,151		



YOUR SUCCESS *Our Passion.*

Phone: (614) 873-4683 ♦ www.selectsires.com

= gender SELECTED*

= FeedPRO*

= RobotPRO*

= GrazingPRO*

*FeedPRO, RobotPRO, GrazingPRO, HHP\$, Your Success Our Passion, and the Select Sires logo are registered trademarks of Select Sires Inc., Plain City, OH. TPI is a registered trademark of Holstein Association USA. DWPS\$ and WTS are registered trademarks of Zoetis Inc., and its affiliates and/or its licensors. Zoetis wellness values are based on January 2025 Zoetis data. *CWS\$ is a trademark of Zoetis Inc., and its affiliates and/or its licensors. GForce and gender SELECTED are trademarks of Select Sires Inc. All gender SELECTED semen is processed using Ultraplus™ Technology. Ultraplus is a trademark of STGen LLC. Evaluations for non-conformation traits are Powered by CDCB*.

FEBRUARY GFORCE™ SIRES

FIDDLE

7H017515 BLUMENFELD FIDDLE
 8403272185806 99% RHA-I TR TP TC TM TL TD TE
 DMS: 345 aAa: 564 B-Casein: A2A2 K-Casein: BB



CDCB-S Genomic Evaluation		(12/24)	
Milk	+1,565 80%R	Net Merit (74%R)	+\$1,277
Protein	+0.12% +82	DWPS*	+\$1,486
Fat	+0.26% +131	Cheese Merit	+\$1,304



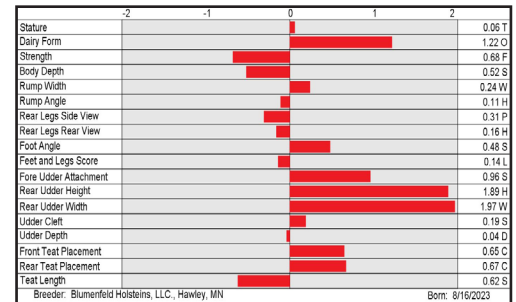
CDCB-S/HA Genomic Evaluation		(12/24)								
Type	+0.89	UDC	+1.14	FLC	-0.14	BWC	-1.05	79%R	GTPI†	+3209

Health and Fertility		(12/24)			
SCS	2.65 75%R	MAS	+2.5 71%R	PL	+5.7 74%R
LIV	+2.2 71%R	DPR	-1.2 74%R	HCR	+1.9 72%R
CCR	-0.2 74%R	FI	+0.0 74%R	SCE	1.9% 64%R
WT\$* +\$77		DCE	2.6% 58%R	DSB	4.7% 56%R
CW\$* +\$65		HHP\$*	+\$1,314		



FIDDLE

S: Ladys-Manor Outcome TUBA-ET
 D: Blumenfeld Gameday 7803-ET (VG-85-VG-MS-DOM)
 MGS: RMD-Dotterer SSI GAMEDAY-ET
 MGD: Blumenfeld Crimson 6945-ET (VG-88-VG-MS)
 MGGs: ABS Crimson-ET



DRESSUP

7H017527 KINGS-RANSOM S DRESSUP-ET
 8403247634527 99% RHA-I TR TP TC TM TL TD TE
 DMS: 123,135 aAa: 312 B-Casein: A1A2 K-Casein: AB



CDCB-S Genomic Evaluation		(12/24)	
Milk	+1,821 79%R	Net Merit (73%R)	+\$1,211
Protein	+0.08% +80	DWPS*	+\$1,341
Fat	+0.29% +150	Cheese Merit	+\$1,228



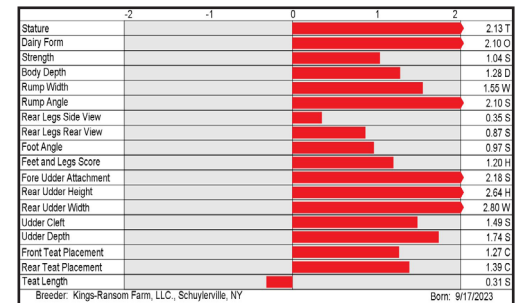
CDCB-S/HA Genomic Evaluation		(12/24)								
Type	+2.26	UDC	+1.86	FLC	+0.72	BWC	+0.62	78%R	GTPI†	+3273

Health and Fertility		(12/24)			
SCS	2.85 75%R	MAS	+3.3 70%R	PL	+4.7 74%R
LIV	+1.2 71%R	DPR	-2.7 74%R	HCR	+1.8 72%R
CCR	-1.8 74%R	FI	-1.4 74%R	SCE	3.4% 62%R
WT\$* +\$50		DCE	3.2% 56%R	DSB	5.6% 54%R
CW\$* -\$3		HHP\$*	+\$1,345		



DRESSUP

S: OCD Trooper SHEEPSTER-ET
 D: Kings-Ransom Daire-ET
 MGS: La-Ca-De-Le Maui-ET
 MGD: Kings-Ransom Acur Delray-ET (VG-85-VG-MS)
 MGGs: Pine-Tree Acura-ET



YOUR SUCCESS *Our Passion.*

Phone: (614) 873-4683 ♦ www.selectsires.com

= gender SELECTED*
 = Mastitis ResistantPRO*
 = RobotPRO*

*RobotPRO, Mastitis ResistantPRO, HHP\$, Your Success Our Passion, and the Select Sires logo are registered trademarks of Select Sires Inc., Plain City, OH. TPI is a registered trademark of Holstein Association USA. DWPS and WT\$ are registered trademarks of Zoetis Inc., and its affiliates and/or its licensors. Zoetis wellness values are based on January 2025 Zoetis data. CW\$ is a trademark of Zoetis Inc., and its affiliates and/or its licensors. GForce and gender SELECTED are trademarks of Select Sires Inc. All gender SELECTED semen is processed using Ultraplus™ Technology. Ultraplus is a trademark of STGen LLC. Evaluations for non-conformation traits are Powered by CDCB®.

FEBRUARY GFORCE™ SIRES

MIKE

7H017678 OCD SHEEPSTER MIKE-ET

8403271294269 99% RHA-I TR TP TC TM TL TD TE
DMS: 345,234 aAa: 435 B-Casein: A2A2 K-Casein: AA



CDCB-S Genomic Evaluation (12/24)

Milk	+2,106	79%R	Net Merit (73%R)	+\$1,270
Protein	+0.06%	+84	DWPS*	+\$1,213
Fat	+0.18%	+131	Cheese Merit	+\$1,283

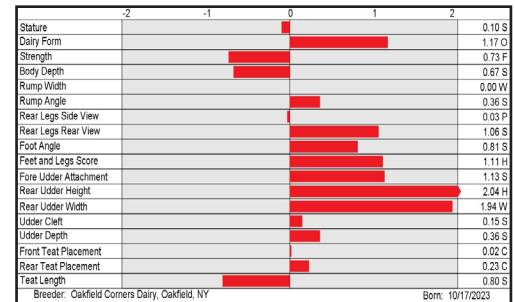
CDCB-S/HA Genomic Evaluation (12/24)

Type +1.36 UDC +1.27 FLC +1.20 BWC -1.15 78%R GTPI* +3240

Health and Fertility (12/24)

SCS	2.91	75%R	MAS	+2.7	70%R	PL	+5.6	74%R
LIV	-0.2	71%R	DPR	-1.4	74%R	HCR	+2.4	72%R
CCR	+0.6	74%R	FI	+0.3	74%R	SCE	2.1%	63%R
WT\$*	-\$85		DCE	2.6%	57%R	DSB	4.7%	56%R
CW\$*	+\$7		HHP\$*	+\$1,301				

S: OCD Trooper SHEEPSTER-ET
D: OCD Frostbite Mint 68550-ET
MGS: T-Spruce G FROST BITE-ET
MGD: OCD Perfect Mint 63586-ET (VG-86-VG-MS-DOM)
MGGs: Siemers Rengd PERFECT-ET



CARLAN-PP

7H017688 PENN-ENGLAND CARLAN-PP-ET

8403271741591 99% RHA-I TR PP TC TM TL TD TE
DMS: 234,345 aAa: 324 B-Casein: A2A2 K-Casein: BB



CDCB-S Genomic Evaluation (12/24)

Milk	+493	80%R	Net Merit (73%R)	+\$808
Protein	+0.11%	+43	DWPS*	+\$944
Fat	+0.20%	+70	Cheese Merit	+\$829

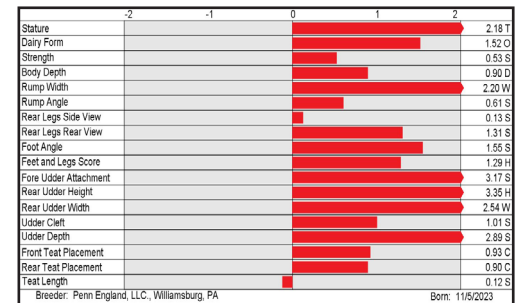
CDCB-S/HA Genomic Evaluation (12/24)

Type +2.30 UDC +2.39 FLC +0.92 BWC +0.61 79%R GTPI* +2924

Health and Fertility (12/24)

SCS	2.72	76%R	MAS	+2.7	71%R	PL	+5.7	74%R
LIV	+2.2	71%R	DPR	+0.3	74%R	HCR	+1.1	72%R
CCR	+2.0	74%R	FI	+1.0	74%R	SCE	2.0%	63%R
WT\$*	+\$207		DCE	1.5%	57%R	DSB	3.0%	55%R
CW\$*	+\$14		HHP\$*	+\$939				

S: Siemers Hanan HANX-P-ET
D: Penn-England Candy18540P-ET
MGS: S-S-I Limlight BEDROCK-PP-ET
MGD: Penn-England Candy 15944P (VG-85)
MGGs: Cherry-Lily Zip LUSTER-P-ET



YOUR SUCCESS *Our Passion.*

Phone: (614) 873-4683 ♦ www.selectsires.com

= gender SELECTED*

= RobotPRO*

*RobotPRO, HHP\$, Your Success Our Passion, and the Select Sires logo are registered trademarks of Select Sires Inc., Plain City, OH. TPI is a registered trademark of Holstein Association USA. DWPS and WT\$ are registered trademarks of Zoetis Inc., and its affiliates and/or its licensors. Zoetis wellness values are based on January 2025 Zoetis data. *CW\$ is a trademark of Zoetis Inc., and its affiliates and/or its licensors. GForce, Showcase and gender SELECTED are trademarks of Select Sires Inc. All gender SELECTED semen is processed using Ultraplus™ Technology. Ultraplus is a trademark of STGen LLC. Evaluations for non-conformation traits are Powered by CDCB®.

FEBRUARY GFORCE™ SIRES

ROOKER

14H017564 SIEMERS ROOKER-ET
 8403267429681 99% RHA-I TR TP TC TM TL TD TE
 DMS: 345,234 aAa: 534 B-Casein: A2A2 K-Casein: BB



CDCB-S Genomic Evaluation			(12/24)	
Milk	+1,406	79%R	Net Merit (73%R)	+\$1,341
Protein	+0.12%	+78	DWPS*	+\$1,553
Fat	+0.32%	+139	Cheese Merit	+\$1,366



Accelerated Genetics®

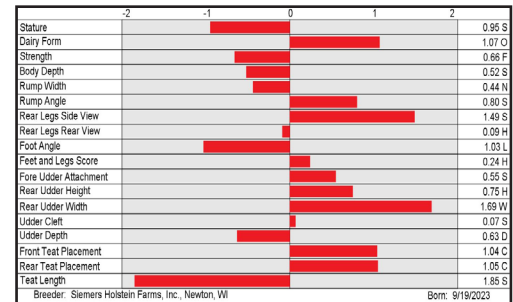
CDCB-S/HA Genomic Evaluation			(12/24)							
Type	+0.41	UDC	+0.73	FLC	+0.28	BWC	-1.31	78%R	GTPI ¹	+3226

Health and Fertility			(12/24)					
SCS	2.76	75%R	MAS	+2.0	70%R	PL	+5.7	74%R
LIV	+3.2	71%R	DPR	-0.7	74%R	HCR	+1.8	72%R
CCR	+0.8	74%R	FI	+0.6	74%R	SCE	2.0%	63%R
WT\$	+\$118		DCE	1.4%	57%R	DSB	3.6%	55%R
CW\$	-\$20		HHP\$*	+\$1,299				



ROOKER

S: SDG-PH Delux Dominance-ET
 D: Siemers Upsd Roz 37917-ET
 MGS: Farnear Upside-ET
 MGD: Siemers Legacy Roz 34005-ET
 MGGS: Pine-Tree CW LEGACY-ET



PARPLE-RED

14H017696 SIEMERS FIRE PARPLE-RED-ET
 8403272850604 99% RHA-I TP TC TM TL TD TE
 DMS: 123,126 aAa: 426 B-Casein: A1A2 K-Casein: AB



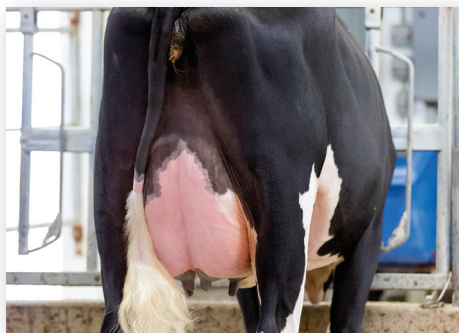
CDCB-S Genomic Evaluation			(12/24)	
Milk	+1,253	80%R	Net Merit (74%R)	+\$876
Protein	+0.06%	+56	DWPS*	+\$1,068
Fat	+0.18%	+95	Cheese Merit	+\$890



Accelerated Genetics®

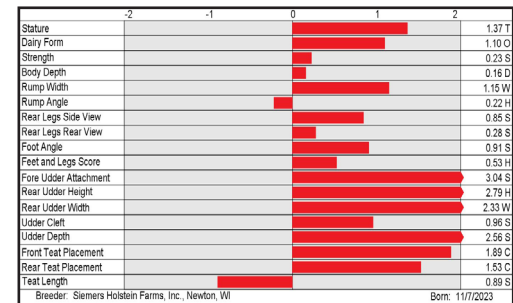
CDCB-S/HA Genomic Evaluation			(12/24)							
Type	+2.01	UDC	+2.27	FLC	+0.20	BWC	+0.17	79%R	GTPI ¹	+2963

Health and Fertility			(12/24)					
SCS	2.83	75%R	MAS	+1.9	71%R	PL	+4.1	74%R
LIV	+0.3	71%R	DPR	-0.9	74%R	HCR	+2.2	72%R
CCR	+0.1	74%R	FI	+0.4	74%R	SCE	2.8%	62%R
WT\$	+\$88		DCE	3.2%	57%R	DSB	5.3%	56%R
CW\$	+\$46		HHP\$*	+\$975				



SIEMERS GD PARIS 36374-ET (VG-85-VG-MS)
 Dam of PARPLE-RED, Farmgirl Photography photo

S: Melarry FIREBALL-RED-ET
 D: Siemers Gd Paris 36374-ET (VG-85-VG-MS)
 MGS: RMD-Dotterer SSI GAMEDAY-ET
 MGD: Siemers Mark Paris 31989-ET (VG-85-VG-MS)
 MGGS: Wilder Mark-ET



YOUR SUCCESS *Our Passion.*

Phone: (614) 873-4683 ♦ www.selectsires.com

= gender SELECTED*

= FeedPRO*

*FeedPRO, HHP\$, Your Success Our Passion, and the Select Sires logo are registered trademarks of Select Sires Inc., Plain City, OH. TPI is a registered trademark of Holstein Association USA. DWPS and WT\$ are registered trademarks of Zoetis Inc., and its affiliates and/or its licensors. Zoetis wellness values are based on January 2025 Zoetis data. *CW\$ is a trademark of Zoetis Inc., and its affiliates and/or its licensors. GForce and gender SELECTED are trademarks of Select Sires Inc. All gender SELECTED semen is processed using Ultraplus™ Technology. Ultraplus is a trademark of STGen LLC. Evaluations for non-conformation traits are Powered by CDCB®.

FEBRUARY GFORCE™ SIREs

ELEVATE

250H017549 TRENT-WAY ELEVATE-ET

8403261835841 99% RHA-I TR TP TC TM TL TD TE
DMS: 123,234 aAa: 324 B-Casein: A2A2 K-Casein: BB



CDCB-S Genomic Evaluation			(12/24)	
Milk	+1,109	80%R	Net Merit (73%R)	+\$632
Protein	+0.05%	+49	DWPS*	+\$607
Fat	+0.13%	+77	Cheese Merit	+\$642

CDCB-S/HA Genomic Evaluation						(12/24)				
Type	+3.24	UDC	+2.65	FLC	+1.69	BWC	+1.13	79%R	GTPI ¹	+2881

Health and Fertility			(12/24)					
SCS	2.93	75%R	MAS	+2.3	70%R	PL	+2.0	74%R
LIV	-3.0	71%R	DPR	-0.9	74%R	HCR	+0.7	71%R
CCR	-0.1	74%R	FI	-0.2	73%R	SCE	2.2%	63%R
WT\$*	-\$38		DCE	1.5%	57%R	DSB	4.3%	55%R
CW\$*	-\$19		HHP\$*	+\$792				



S: Siemers Wolf HULU 37006-ET
D: Trent-Way Essay-ET (VG-88-VG-MS)
MGS: Siemers Rengd PERFECT-ET
MGD: Morningview Altuve 6683-ET (VG-87-VG-MS)
MGGS: Peak AltaAltuve-ET

TRENT-WAY ESSAY-ET (VG-88-VG-MS)
Dam of ELEVATE

	-2	-1	0	1	2	
Stature						3.42 T
Dairy Form						3.36 O
Strength						1.57 S
Body Depth						2.24 D
Rump Width						3.63 W
Rump Angle						1.10 S
Rear Legs Side View						0.76 S
Rear Legs Rear View						2.75 S
Foot Angle						1.88 S
Feet and Legs Score						2.20 H
Fore Udder Attachment						2.91 S
Rear Udder Height						4.03 H
Rear Udder Width						4.44 W
Udder Cleft						2.51 S
Udder Depth						1.98 S
Front Teat Placement						2.66 C
Rear Teat Placement						2.87 C
Teat Length						0.22 L

Breeder: Trent & Kelsey Hendrickson, Blanchardville, WI Born: 10/20/2023



YOUR SUCCESS *Our Passion.*

Phone: (614) 873-4683 ♦ www.selectsires.com

= gender SELECTED™
 = Showcase™

*HHP\$, Your Success Our Passion. and the Select Sires logo are registered trademarks of Select Sires Inc., Plain City, OH. TPI is a registered trademark of Holstein Association USA. DWPS and WT\$ are registered trademarks of Zoetis Inc., and its affiliates and/or its licensors. Zoetis wellness values are based on January 2025 Zoetis data. *CW\$ is a trademark of Zoetis Inc., and its affiliates and/or its licensors. GForce, Showcase and gender SELECTED are trademarks of Select Sires Inc. All gender SELECTED semen is processed using Ultraplus™ Technology. Ultraplus is a trademark of STGen LLC. Evaluations for non-conformation traits are Powered by CDCB™.

FEBRUARY GFORCE™ SIREs

JX CREDITS {6}-P

7JE2320 JX VICTORY CABAL CREDITS {6}-P-ET
 8403281513167 BBR 100 JH1F JNS-TF
 DMS: 234,345 B-Casein: A2A2 K-Casein: BB

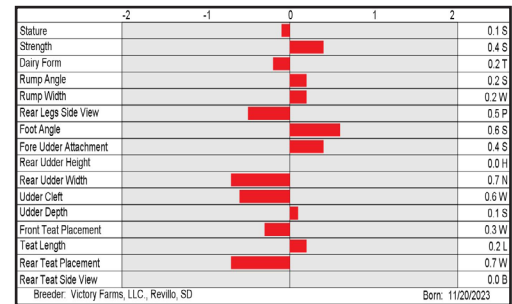


CDCB-S Genomic Evaluation			(12/24)	
Milk	+386	74%R	Net Merit (72%R)	+\$631
Protein	+0.05%	+25	Cheese Merit	+\$644
Fat	+0.12%	+42	CFP	+67

CDCB-S/AJCA Genomic Evaluation			(12/24)	
Type	+0.3	78%R	+8.8JUI*	GJPI* +158

Health and Fertility			(12/24)	
SCS	2.72	73%R	PL +7.5	71%R
DPR	+1.9	69%R	HCR +2.7	58%R
DWP\$*	+\$1,050		WT\$*	+\$277
M FVR	106	37%R	MAS +0.0	57%R
HHP\$*	+\$682		LIV +3.2	61%R
			CCR +2.4	68%R
			CW\$™	+\$148
			ZMAS	113 36%R

S: JX Primus Watkins CABAL (5)-ET
 D: JX Victory 58549 Isner 63247 {6}-P-ET (VG-84%)
 MGS: Tog Isner-P-ET
 MGD: JX Victory 52571 Jiggy 58549 {5} (VG-80%)
 MGGs: JX Kash-In Got Jiggy {6}-ET



YOUR SUCCESS *Our Passion.*

Phone: (614) 873-4683 ♦ www.selectsires.com

- = gender SELECTED*
- = Mastitis ResistantPRO*
- = FeedPRO*
- = RobotPRO*
- = GrazingPRO*

*Mastitis ResistantPRO, FeedPRO, RobotPRO, GrazingPRO, HHP\$, Your Success Our Passion. and the Select Sires logo are registered trademarks of Select Sires Inc., Plain City, OH. DWP\$ and WT\$ are registered trademarks of Zoetis Inc., and its affiliates and/or its licensors. Zoetis wellness values are based on January 2025 Zoetis data. CW\$ is a trademark of Zoetis Inc., and its affiliates and/or its licensors. JPI and JUI are trademarks of the American Jersey Cattle Association. GForce and gender SELECTED are trademarks of Select Sires Inc. All gender SELECTED semen is processed using Ultraplus™ Technology. Ultraplus is a trademark of STGen LLC. Evaluations in this report are Powered by CDCB.

FEBRUARY GFORCE™ SIRES

UR NEUTRAL {0}

9XD34 UR JX VICTORY NEUTRAL {0}-ET

XD8403281513060 BBR 50
B-Casein: A2A2 K-Casein: BB



CDCB-M Genomic Evaluation (12/24)

Milk	+1,772	44%R	Net Merit (42%R)	+\$695
Protein	-0.03%	+60	Cheese Merit	+\$703
Fat	+0.00%	+88	CFP	+148

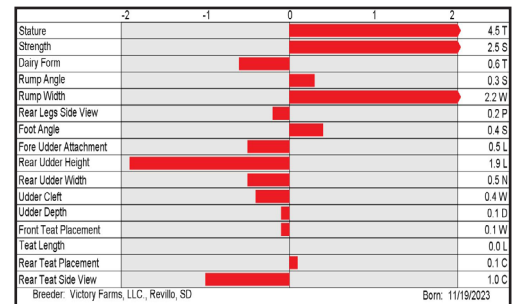
CDCB-M/AJCA Genomic Evaluation (12/24)

Type -0.7	34%R	+3.9URUI	URPI +221
-----------	------	----------	-----------

Health and Fertility (12/24)

SCS	2.77	41%R	PL	+4.4	38%R	LIV	+4.0	36%R
DPR	+2.7	38%R	HCR	+0.8	39%R	CCR	+3.3	38%R
MAS	-1.1	31%R	HHP\$*	+\$971				

S: T-Spruce MS-SSI A MADURO-ET
D: JX Victory 58549 Nicklaus 63419 (6)-ET
MGS: Victory Thrasher NICKLAUS-ET
MGD: JX Victory 52571 Jiggy 58549 (5) (VG-80%)
MGGS: JX Kash-In Got Jiggy (6)-ET



UR SUSTAIN {0}

9XD35 UR JX VICTORY SUSTAIN {0}-ET

XD8403281513105 BBR 50
B-Casein: A2A2



CDCB-M Genomic Evaluation (12/24)

Milk	+1,658	44%R	Net Merit (42%R)	+\$710
Protein	+0.01%	+64	Cheese Merit	+\$719
Fat	+0.05%	+92	CFP	+156

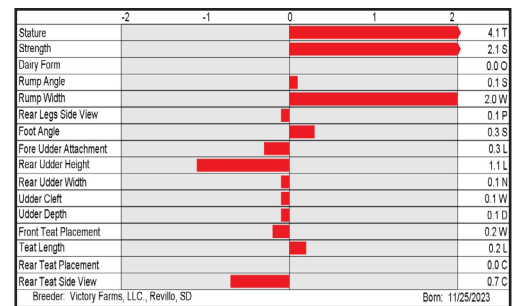
CDCB-M/AJCA Genomic Evaluation (12/24)

Type -0.2	34%R	+6.5URUI	URPI +217
-----------	------	----------	-----------

Health and Fertility (12/24)

SCS	2.91	41%R	PL	+3.8	38%R	LIV	+3.2	36%R
DPR	+1.7	38%R	HCR	+0.7	38%R	CCR	+2.3	38%R
MAS	-0.1	31%R	HHP\$*	+\$980				

S: T-Spruce MS-SSI A MADURO-ET
D: JX Victory 58549 Nicklaus 63419 (6)-ET
MGS: Victory Thrasher NICKLAUS-ET
MGD: JX Victory 52571 Jiggy 58549 (5) (VG-80%)
MGGS: JX Kash-In Got Jiggy (6)-ET



YOUR SUCCESS *Our Passion.*

Phone: (614) 873-4683 ♦ www.selectsires.com