

JANUARY GFORCE™ SIRES

NONI

7H017338 BADGER SIEMERS NONI-ET
8403267429184 99% RHA-I TR TP TC TM TV TL TY TD TE
DMS: 135,561 aAa: 423 B-Casein: A2A2 K-Casein: AB

CDCB-S Genomic Evaluation			(12/24)	
Milk	+1,806	80%R	Net Merit (74%R)	+\$1,257
Protein	+0.08%	+79	DWPS*	+\$1,485
Fat	+0.24%	+136	Cheese Merit	+\$1,274

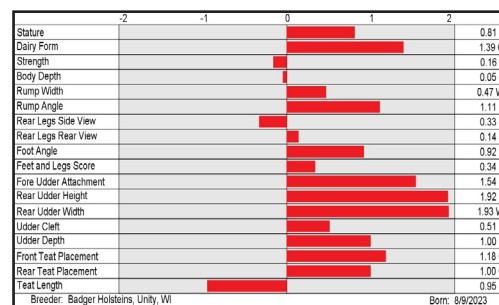


NONI

S: OCD Trooper SHEEPSTER-ET
D: Badger SSI Zazzle 17767-ET
MGS: Peak AltaZazzle-ET
MGD: RMD-Dotterer SSI 16447-ET
MGGS: S-S-I LA Sanderson SHIEK-ET

CDCB-S/HA Genomic Evaluation						(12/24)				
Type	+1.24	UDC	+1.37	FLC	+0.16	BWC	-0.51	78%R	GTPI ¹	+3236

Health and Fertility			(12/24)					
SCS	2.84	76%R	MAS	+3.0	71%R	PL	+6.1	75%R
LIV	+2.7	71%R	DPR	-0.9	74%R	HCR	+0.0	72%R
CCR	+0.9	74%R	FI	+0.0	74%R	SCE	2.5%	63%R
WT\$	+\$166		DCE	2.0%	57%R	DSB	3.8%	55%R
CW\$	+\$28		HHP\$*	+\$1,342				



FETA

7H017416 BOMAZ EASTON FETA-ET
8403277651266 99% RHA-I TR TP TC TM TL TD TE
B-Casein: A2A2 K-Casein: BB

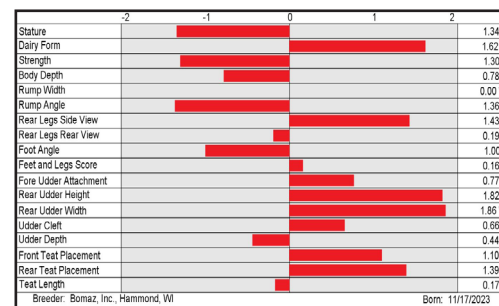
CDCB-S Genomic Evaluation			(12/24)	
Milk	+1,472	80%R	Net Merit (73%R)	+\$1,328
Protein	+0.13%	+81	DWPS*	+\$1,346
Fat	+0.28%	+133	Cheese Merit	+\$1,352



CDCB-S/HA Genomic Evaluation						(12/24)				
Type	+1.11	UDC	+1.40	FLC	+0.29	BWC	-2.07	78%R	GTPI ¹	+3205

Health and Fertility			(12/24)					
SCS	2.81	75%R	MAS	+1.1	71%R	PL	+4.9	74%R
LIV	+0.5	71%R	DPR	-1.6	74%R	HCR	+1.4	72%R
CCR	-1.1	74%R	FI	-0.6	74%R	SCE	1.5%	63%R
WT\$	-\$86		DCE	1.5%	57%R	DSB	3.2%	55%R
CW\$	+\$23		HHP\$*	+\$1,236				

S: Pine-Tree EASTON-ET
D: Bomaz Hercules 10615-ET
MGS: Denovo 16429 Hercules-ET
MGD: Bomaz Billy 9226 (GP-81)
MGGS: Mr Ri-Val-Re Free Billy-ET



YOUR SUCCESS *Our Passion.*

Phone: (614) 873-4683 ♦ www.selectsires.com

= gender SELECTED*
 = RobotPRO*

*RobotPRO, HHP\$, Your Success Our Passion, and the Select Sires logo are registered trademarks of Select Sires Inc., Plain City, OH. TPI is a registered trademark of Holstein Association USA. DWPS and WT\$ are registered trademarks of Zoetis Inc., and its affiliates and/or its licensors. Zoetis wellness values are based on December 2024 Zoetis data. *CW\$ is a trademark of Zoetis Inc., and its affiliates and/or its licensors. GForce and gender SELECTED are trademarks of Select Sires Inc. All gender SELECTED semen is processed using Ultraplus™ Technology. Ultraplus is a trademark of STGen LLC. Evaluations for non-conformation traits are Powered by CDCB®.

JANUARY GFORCE™ SIRES

HARROW

7H017565 SIEMERS HARROW-ET
8403267429777 99% RHA-I RC TP TC TM TL TD TE
DMS: 456,561 aAa: 351 B-Casein: A2A2 K-Casein: AB



CDCB-S Genomic Evaluation			(12/24)	
Milk	+1,792	80%R	Net Merit (74%R)	+\$1,040
Protein	+0.05%	+69	DWPS*	+\$1,006
Fat	+0.11%	+99	Cheese Merit	+\$1,051



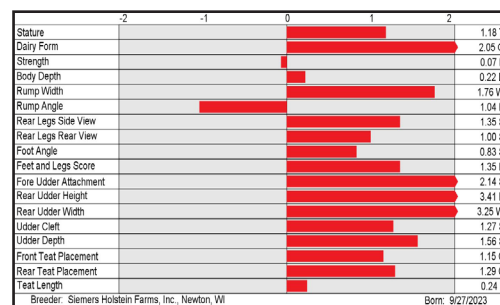
CDCB-S/HA Genomic Evaluation						(12/24)				
Type	+2.15	UDC	+2.32	FLC	+1.04	BWC	-0.43	79%R	GTPI ¹	+3132

Health and Fertility			(12/24)					
SCS	2.89	76%R	MAS	+1.9	72%R	PL	+4.9	75%R
LIV	+1.1	72%R	DPR	+0.4	75%R	HCR	+2.6	73%R
CCR	+1.4	75%R	FI	+1.3	75%R	SCE	2.1%	63%R
WT\$*	-\$94		DCE	2.2%	58%R	DSB	4.1%	56%R
CW\$*	+\$15		HHP\$*	+\$1,058				



SIEMERS RPD HANAN 33313-ET (EX-90-EX-MS)
Dam of HARROW

S: STgen RC Redlea-ET
D: Siemens Rpd Hanan 33313-ET (EX-90-EX-MS)
MGS: ST Gen R-Haze Rapid-ET
MGD: Siemens Doc Hanan 28286-ET (EX-92-EX-MS-GMD)
MGGs: Woodcrest King DOC (EX-90)



KIHLA-P

7H017666 WINSTAR KIHILA-P-ET
8403276319442 99% RHA-I TR PC TC TM TL TD TE
DMS: 234,345 aAa: 423 B-Casein: A2A2 K-Casein: AB



CDCB-S Genomic Evaluation			(12/24)	
Milk	+1,276	79%R	Net Merit (73%R)	+\$1,177
Protein	+0.06%	+57	DWPS*	+\$996
Fat	+0.28%	+123	Cheese Merit	+\$1,192



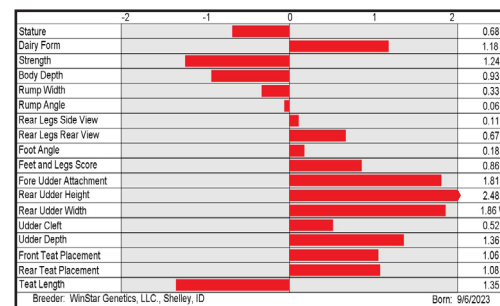
CDCB-S/HA Genomic Evaluation						(12/24)				
Type	+1.41	UDC	+1.94	FLC	+1.00	BWC	-1.73	79%R	GTPI ¹	+3135

Health and Fertility			(12/24)					
SCS	2.76	75%R	MAS	+1.6	71%R	PL	+5.4	74%R
LIV	+1.7	71%R	DPR	-0.6	74%R	HCR	+1.4	72%R
CCR	+0.2	74%R	FI	+0.5	74%R	SCE	1.8%	64%R
WT\$*	-\$184		DCE	2.1%	57%R	DSB	5.0%	56%R
CW\$*	-\$4		HHP\$*	+\$1,108				



WINSTAR ENTITY 6411-ET (VG-85-VG-MS-DOM)
Grandam of KIHILA-P

S: Pine-Tree EASTON-ET
D: Winstar Mendel 7813-P-ET (VG-86-VG-MS)
MGS: Winstar Mendel-P-ET
MGD: Winstar Entity 6411-ET (VG-85-VG-MS-DOM)
MGGs: Denovo 8084 Entity-ET



YOUR SUCCESS *Our Passion.*

Phone: (614) 873-4683 ♦ www.selectsires.com

JANUARY GFORCE™ SIRES

HINGE

7H017700 HAVEITALL BLAKELY HINGE-ET
8403277629429 99% RHA-I TR TP TC TM TL TD TE
DMS: 123,135 aAa: 234 B-Casein: A2A2 K-Casein: AB



CDCB-S Genomic Evaluation		(12/24)	
Milk	+1,564 79%R	Net Merit (73%R)	+\$904
Protein	+0.06% +65	DWPS*	+\$817
Fat	+0.14% +98	Cheese Merit	+\$917



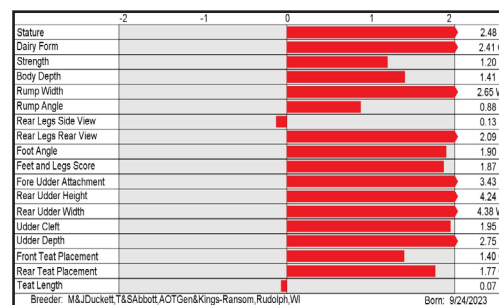
CDCB-S/HA Genomic Evaluation		(12/24)	
Type	+3.31	UDC	+3.09
FLC	+1.51	BWC	+0.87
79%R		GTP1*	+3170

Health and Fertility		(12/24)	
SCS	2.83 75%R	MAS	+1.9 71%R
LIV	-0.9 72%R	DPR	-1.0 74%R
CCR	+1.3 74%R	FI	+0.9 74%R
WT\$*	-\$34	DCE	1.8% 57%R
CW\$*	+\$0	HHP\$*	+\$1,073
		PL	+4.5 75%R
		HCR	+3.4 72%R
		SCE	2.2% 62%R
		DSB	4.2% 56%R



DUCKETT PERFECT HOLLY-ET (VG-87-VG-MS)
Dam of HINGE

S: Westcoast Gd BLAKELY-ET
D: Duckett Perfect Holly-ET (VG-87-VG-MS)
MGS: Siemers Rengd PERFECT-ET
MGD: S-S-I Doc Have Not 8784-ET (EX-96-EX-MS-DOM)
MGGS: Woodcrest King DOC (EX-90)



SERRANO

14H017453 S-S-I DOMINANCE SERRANO-ET
8403272648951 99% RHA-I TR TP TC TM TL TD TE
aAa: 312 B-Casein: A2A2 K-Casein: AB



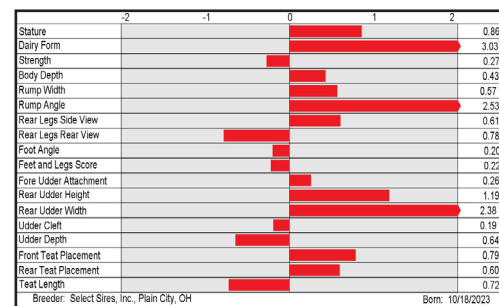
CDCB-S Genomic Evaluation		(12/24)	
Milk	+1,555 79%R	Net Merit (73%R)	+\$1,318
Protein	+0.11% +80	DWPS*	+\$1,376
Fat	+0.31% +144	Cheese Merit	+\$1,342



CDCB-S/HA Genomic Evaluation		(12/24)	
Type	+0.70	UDC	+0.55
FLC	-0.57	BWC	-1.29
78%R		GTP1*	+3229

Health and Fertility		(12/24)	
SCS	2.72 75%R	MAS	+2.4 70%R
LIV	+0.3 71%R	DPR	-0.7 73%R
CCR	+0.9 73%R	FI	+1.1 73%R
WT\$*	+\$95	DCE	1.2% 57%R
CW\$*	-\$75	HHP\$*	+\$1,311
		PL	+5.9 74%R
		HCR	+2.9 72%R
		SCE	2.0% 63%R
		DSB	3.6% 55%R

S: SDG-PH Delux Dominance-ET
D: S-S-I Jalapeno 1084 4413-ET
MGS: Progenesis Jalapeno
MGD: S-S-I Maximus 9821 1084-ET
MGGS: RMD-Dotterer SSI MAXIMUS-ET



YOUR SUCCESS *Our Passion.*

Phone: (614) 873-4683 ♦ www.selectsires.com

- = Showcase*
- = gender SELECTED*
- = FeedPRO*
- = RobotPRO*

*FeedPRO, RobotPRO, HHP\$, Your Success Our Passion, and the Select Sires logo are registered trademarks of Select Sires Inc., Plain City, OH. TPI is a registered trademark of Holstein Association USA. DWPS\$ and WT\$ are registered trademarks of Zoetis Inc., and its affiliates and/or its licensors. Zoetis wellness values are based on December 2024 Zoetis data. *CW\$ is a trademark of Zoetis Inc., and its affiliates and/or its licensors. GForce, Showcase and gender SELECTED are trademarks of Select Sires Inc. All gender SELECTED semen is processed using Ultraplus™ Technology. Ultraplus is a trademark of STGen LLC. Evaluations for non-conformation traits are Powered by CDCB*.

JANUARY GFORCE™ SIRES

REASURE-RED

14H017548 TRENT-WAY REASURE-RED-ET
8403261835839 99% RHA-I TP TC TM TL TD TE
DMS: 345,135 aAa: 432 B-Casein: A2A2 K-Casein: BB



CDCB-S Genomic Evaluation		(12/24)	
Milk	+1,114 79%R	Net Merit (73%R)	+\$856
Protein	+0.03% +44	DWPS*	+\$1,060
Fat	+0.13% +76	Cheese Merit	+\$868



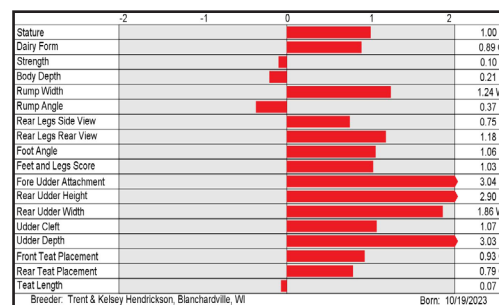
CDCB-S/HA Genomic Evaluation		(12/24)								
Type	+1.82	UDC	+2.40	FLC	+0.90	BWC	-0.07	79%R	GTP1*	+2921

Health and Fertility		(12/24)			
SCS	2.70 75%R	MAS	+4.2 71%R	PL	+5.7 74%R
LIV	+1.2 71%R	DPR	-0.5 74%R	HCR	+2.0 72%R
CCR	-0.1 74%R	FI	+0.4 74%R	SCE	2.1% 62%R
WT\$	+\$226	DCE	1.4% 58%R	DSB	4.0% 56%R
CW\$	+\$32	HHP\$*	+\$1,021		



TRENT-WAY REASURE-ET (VG-87-VG-MS)
Dam of REASURE-RED

S: Melarry FIREBALL-RED-ET
D: Trent-Way Reasure-ET (VG-87-VG-MS)
MGS: Siemers Rengd PERFECT-ET
MGD: Trent-Way-JS Redzone-Red-ET (EX-91-2E-EX-MS)
MGGS: Holyland SIMPLICITY-P-RC-ET



PARBIE-RED

14H017555 SIEMERS PARBIE-RED-ET
8403267429058 99% RHA-I TP TC TM TL TD TE
DMS: 234,345 aAa: 324 B-Casein: A1A2 K-Casein: AA



CDCB-S Genomic Evaluation		(12/24)	
Milk	+1,936 80%R	Net Merit (73%R)	+\$979
Protein	+0.05% +76	DWPS*	+\$917
Fat	+0.14% +112	Cheese Merit	+\$988



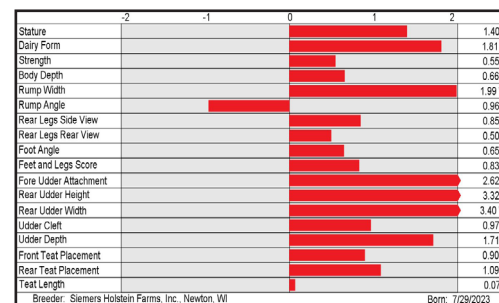
CDCB-S/HA Genomic Evaluation		(12/24)								
Type	+2.36	UDC	+2.37	FLC	+0.47	BWC	+0.26	79%R	GTP1*	+3110

Health and Fertility		(12/24)			
SCS	3.02 75%R	MAS	+0.6 71%R	PL	+3.2 75%R
LIV	-1.8 72%R	DPR	-0.7 74%R	HCR	+1.7 73%R
CCR	+0.4 74%R	FI	+0.5 74%R	SCE	2.1% 63%R
WT\$	-\$203	DCE	2.5% 58%R	DSB	5.3% 56%R
CW\$	+\$68	HHP\$*	+\$1,064		



PARBIE-RED

S: STgen RC Redlea-ET
D: Siemers Gd Paris 36374-ET (VG-85-VG-MS)
MGS: RMD-Dotterer SSI GAMEDAY-ET
MGD: Siemers Mark Paris 31989-ET (VG-85-VG-MS)
MGGS: Wilder Mark-ET



YOUR SUCCESS *Our Passion.*

Phone: (614) 873-4683 ♦ www.selectsires.com

= gender SELECTED*

= Mastitis ResistantPRO*

= RobotPRO*

Mastitis ResistantPRO, RobotPRO, HHP\$, Your Success Our Passion, and the Select Sires logo are registered trademarks of Select Sires Inc., Plain City, OH. TPI is a registered trademark of Holstein Association USA. DWPS and WT\$ are registered trademarks of Zoetis Inc., and its affiliates and/or its licensors. Zoetis wellness values are based on December 2024 Zoetis data. "CW\$ is a trademark of Zoetis Inc., and its affiliates and/or its licensors. GForce and gender SELECTED are trademarks of Select Sires Inc. All gender SELECTED semen is processed using Ultraplus™ Technology. Ultraplus is a trademark of STGen LLC. Evaluations for non-conformation traits are Powered by CDCB.

JANUARY GFORCE™ SIRES

PALDWYN

250H017567 SIEMERS HULU PALDWYN-ET
 8403267430053 99% RHA-I RC TP TC TM TV TL TY TD TE
 DMS: 123,234 aAa: 234 B-Casein: A2A2 K-Casein: BB



CDCB-S Genomic Evaluation			(12/24)	
Milk	+752	81%R	Net Merit (75%R)	+\$693
Protein	+0.07%	+43	DWPS*	+\$750
Fat	+0.13%	+64	Cheese Merit	+\$707

CDCB-S/HA Genomic Evaluation						(12/24)				
Type	+3.75	UDC	+3.70	FLC	+1.87	BWC	+1.68	80%R	GTPI ¹	+2997

Health and Fertility			(12/24)					
SCS	2.87	77%R	MAS	+2.5	72%R	PL	+4.3	76%R
LIV	-0.5	73%R	DPR	+0.9	76%R	HCR	+3.3	73%R
CCR	+2.2	76%R	FI	+1.7	75%R	SCE	2.5%	63%R
WTS*	+\$161		DCE	1.7%	58%R	DSB	5.2%	56%R
CWS*	-\$65		HHP\$*	+\$861				



S: Siemers Wolf HULU 37006-ET
 D: Siemers Lmda Paris 27856-ET (EX-91-EX-MS-GMD-DOM)
 MGS: Farnear Delta-Lambda-ET
 MGD: Siemers Denver Paris-ET (EX-91-EX-MS-GMD-DOM)
 MGGS: Mr Mogul Denver 1426-ET

SIEMERS LMDA PARIS 27856-ET (EX-91-EX-MS-GMD-DOM)
 Dam of PALDWYN

	-2	-1	0	1	2	
Stature						4.00T
Dairy Form						3.10O
Strength						1.93S
Body Depth						2.46D
Rump Width						3.72W
Rump Angle						1.03S
Rear Legs Side View						0.27P
Rear Legs Rear View						2.86S
Foot Angle						3.32S
Feet and Legs Score						2.44H
Fore Udder Attachment						4.22S
Rear Udder Height						5.34H
Rear Udder Width						5.24W
Udder Cleft						3.17S
Udder Depth						3.42S
Front Teat Placement						3.02C
Rear Teat Placement						3.35C
Teat Length						0.10L
Breeder: Siemers Holstein Farms, Inc., Newton, WI						
Born: 10/21/2023						



YOUR SUCCESS *Our Passion.*

Phone: (614) 873-4683 ♦ www.selectsires.com

= gender SELECTED™
 = Showcase™

*HHP\$. Your Success Our Passion. and the Select Sires logo are registered trademarks of Select Sires Inc., Plain City, OH. TPI is a registered trademark of Holstein Association USA. DWPS and WTS are registered trademarks of Zoetis Inc., and its affiliates and/or its licensors. Zoetis wellness values are based on December 2024 Zoetis data. *CW\$ is a trademark of Zoetis Inc., and its affiliates and/or its licensors. GForce, Showcase and gender SELECTED are trademarks of Select Sires Inc. All gender SELECTED semen is processed using Ultraplus™ Technology. Ultraplus is a trademark of STGen LLC. Evaluations for non-conformation traits are Powered by CDCB®.

JANUARY GFORCE™ SIRES

KRONOS-PP

7JE2375 KASH-IN CRAZEFULLS KRONOS-PP-ET
 8403276444415 BBR 100 JH1F JNS-TF
 DMS: 246,126 aAa: 534 B-Casein: A2A2 K-Casein: BB

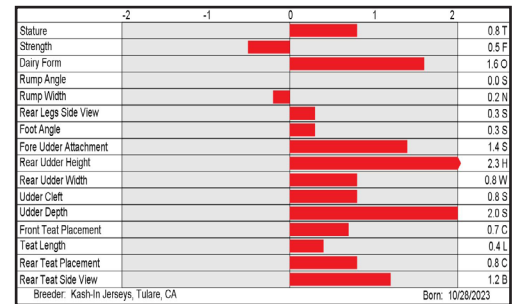


CDCB-S Genomic Evaluation			(12/24)	
Milk	+809	76%R	Net Merit (74%R)	+\$471
Protein	-0.01%	+27	Cheese Merit	+\$474
Fat	-0.08%	+23	CFP	+50

CDCB-S/AJCA Genomic Evaluation			(12/24)	
Type	+1.3	79%R	+20.2JUI*	GJPI* +114

Health and Fertility			(12/24)	
SCS	2.90	75%R	PL +4.5	73%R
DPR	+0.2	71%R	LIV +2.4	64%R
MAS	+0.0	60%R	HCR +0.3	62%R
			CCR +0.8	70%R
			HHP\$*	+\$500

S: Tog Lamoure 39878-PP-ET
 D: Ky-Hi Craze Craze-full-P-ET (E-94%)
 MGS: River Valley Circus Craze-ET
 MGD: Havs Lovabull Watchfull-P (E-93%)
 MGGS: Den-Kel Jace Lovabull-P



YOUR SUCCESS *Our Passion.*

Phone: (614) 873-4683 ♦ www.selectsires.com

= Showcase*

= gender SELECTED*

*HHP\$, Your Success Our Passion. and the Select Sires logo are registered trademarks of Select Sires Inc., Plain City, OH. *JPI and JUI are trademarks of the American Jersey Cattle Association. GForce, Showcase and gender SELECTED are trademarks of Select Sires Inc. All gender SELECTED semen is processed using Ultraplus™ Technology. Ultraplus is a trademark of STGen LLC. Evaluations in this report are Powered by CDCB®.

JANUARY GFORCE™ SIRES

NETFLIX

9BS953 HILLTOP ACRES P NETFLIX ETV
8403264521221 WT MT DT BH2T BH14T
B-Casein: A2A2 K-Casein: BB



CDCB-S Genomic Evaluation			(12/24)	
Milk	+941	65%R	Net Merit (60%R)	+\$628
Protein	+0.12%	+58	Cheese Merit	+\$649
Fat	+0.09%	+57	CFP	+115

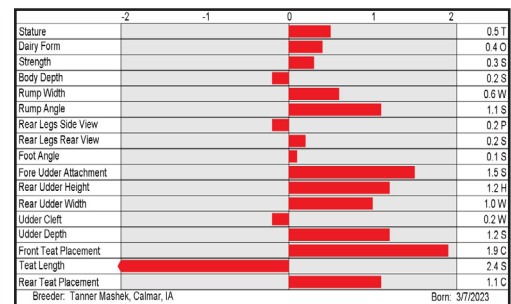
CDCB-S/BSCBA Genomic Evaluation			(12/24)		
Type +0.9	68%R		+1.12UDC	+0.3Mobility	GPFR +195

Health and Fertility			(12/24)			
SCS	2.79	61%R	PL +2.4	57%R	LIV -0.7	44%R
DPR	-1.0	54%R	HCR +0.7	46%R	CCR +0.8	49%R
MKS	103	60%	SCE 2.3%	43%R	DCE 2.6%	36%R
MAS	+0.1	27%R				



HILLTOP ACRES S NUTELLA "E91 E92MS"
Dam of NETFLIX

S: Hilltop Acres Perfection ETV
D: Hilltop Acres S Nutella "E91 E92MS"
MGS: La Rainbow Sweet Silver ET
MGD: Hilltop Acres Pat Nadine "VG87 VG MS"
MGGS: R Hart Biver Patton ET



YOUR SUCCESS *Our Passion.*

Phone: (614) 873-4683 ♦ www.selectsires.com

JANUARY GFORCE™ SIRES

GARNETT P

9AY151 GOOD-VUE GARNETT P
8403267034293 AH1T AH2T *TF AMF
B-Casein: A1A2 K-Casein: AE



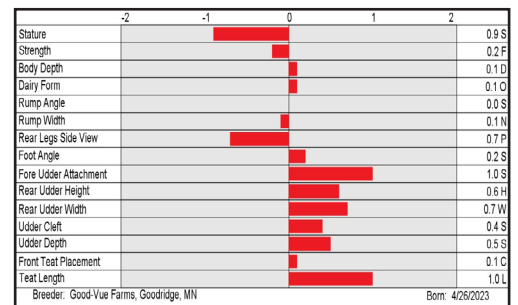
CDCB-S Genomic Evaluation			(12/24)	
Milk	+344	46%R	Net Merit (41%R)	+\$107
Protein	-0.06%	+0	Cheese Merit	+\$103
Fat	-0.06%	+4	CFP	+4

CDCB-S/ABA Genomic Evaluation			(12/24)	
Type	+0.3	38%R	GPTI +412	

Health and Fertility			(12/24)					
SCS	2.91	38%R	PL	+2.0	31%R	LIV	-0.4	25%R
DPR	-0.5	28%R	HCR	+0.4	25%R	CCR	-0.1	27%R

PUREBRED AYRSHIRE

S: Palmyra Lochinvar REYNOLDS-ET
D: Good-Vue J Gimmick (VG-87)
MGS: Hawksfield JAMISON P *TF
MGD: Good-Vue Bendigs Glamour (VG-87)
MGGS: Palmyra Jerry Bendig



YOUR SUCCESS *Our Passion.*

Phone: (614) 873-4683 ♦ www.selectsires.com