



7HO9992 FARNEAR BAXTER BILLARD-ET

USA63050075 100% RHA-NA B/R TV TL TD



USDA Genomic Evaluation (08/09)					
(Rel 74%)	+1,292Milk	% Test	Lbs.	Net Merit (Rel 70%)	+\$ 480
Protein		- .01	+ 36	Cheese Merit	+\$ 472
Fat		- .04	+ 36	Fluid Merit	+\$ 490
SCS 3.07 (Rel 69%)	PL +3.8 (Rel 63%)			DPR +1.3 (Rel 62%)	
USDA/HA Genomic Evaluation (08/09)					
	+2.67Type	Rel 69%		GTPI™ +1884	
HA Composites	+2.81UDC	+2.67FLC	+1.44BD	+1.82D	
Calving Ease (%DBH)	08/09	Service Sire	9%	68% Rel	
		Daughter	4%	61% Rel	

EMERALD-ACR-SA T-BAXTER

FUSTEAD EMORY BLITZ-ET (EX-95-GM)

EMERALD-ACR-SA T-MALLORY-ET (VG-87)

FARNEAR SPOT ZENITH ZARY (EX-91-EX-MS-DOM)

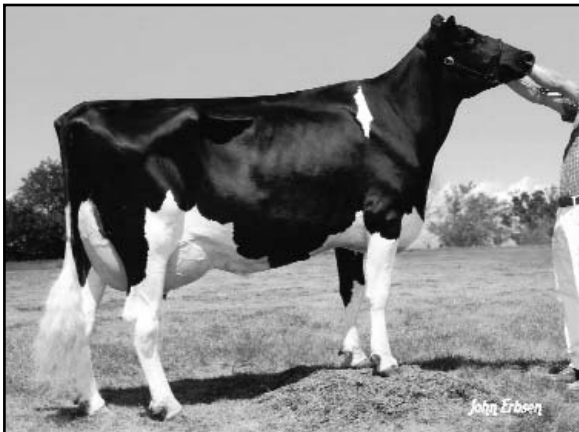
2-8 365d 29,570M 3.8% 1,120F 3.0% 895P
 3-10 365d 41,710M 3.5% 1,477F 3.1% 1,289P

OCEAN-VIEW ZENITH-TW-ET (GM)

FARNEAR EMORY MOONLITE SPOT (EX-93-EX-MS-GMD)

1-11 365d 29,350M 4.0% 1,167F 3.1% 898P
 3-3 365d 32,340M 3.7% 1,205F 3.1% 1,000P
 4-6 365d 39,850M 3.6% 1,422F 2.9% 1,172P
 SIRE: MJR Blackstar Emory-ET (EX-97-GM)
 DAM: Farneare Esq Honey Moonlight (VG-85-GMD)
 5-5 365d 32,990M 4.2% 1,388F 2.9% 959P

- ◆ Early Baxter x (EX-91) ZENITH x (EX-93) EMORY
- ◆ Over +1880GTPI, strong UDC and nice PL rankings
- ◆ Expect tall, uphill run cattle with high, wide rear udders and show ring style!



FARNEAR SPOT ZENITH ZARY (EX-91-EX-MS-DOM)

08/2009 USDA/HA Genomic PA STA'S					
69 %Rel T	-2	-1	0	1	2
STATURE					1.81 T
DAIRY FORM					2.47 O
STRENGTH					0.54 S
BODY DEPTH					1.14 D
RUMP WIDTH					2.28 W
RUMP ANGLE					0.60 H
LEGS SIDE VIEW					0.03 S
LEGS REAR VIEW					2.54 S
FOOT ANGLE					2.69 S
FEET & LEGS SCORE					3.11 H
FORE ATTACHMENT					2.72 S
REAR UDDER HEIGHT					4.11 H
UDDER CLEFT					3.45 S
UDDER DEPTH					2.44 S
FRONT TEAT PLACE					2.03 C
REAR TEAT PLACE					2.94 C
FRONT TEAT LENGTH					0.92 S

aAa: 156 DMS: 561 Born: 10/28/2007
 Breeder: Rick & Tom Simon, Farley, IA