



7HO9973 SPRINGHILL-OH J MOUNTAINEER

USA64523958 100% RHA-NA TR TV TL TD



USDA Genomic Evaluation (08/09)					
(Rel 74%)	+1,867Milk	% Test	Lbs.	Net Merit (Rel 70%)	+\$ 529
Protein		+ .01	+ 58	Cheese Merit	+\$ 531
Fat		+ .10	+ 96	Fluid Merit	+\$ 520
SCS 2.93 (Rel 68%)	PL +0.5 (Rel 61%)			DPR -1.5 (Rel 59%)	
USDA/HA Genomic Evaluation (08/09)					
	+2.97Type	Rel 70%		GTPI™	+1977
HA Composites	+2.72UDC	+2.44FLC	+2.35BD	+2.49D	
Calving Ease (%DBH)	08/09	Service Sire	9%	65% Rel	
		Daughter	7%	61% Rel	

SANDY-VALLEY BOLTON-ET (EX-90)

LEXVOLD LUKE HERSHEL-ET (GM)

SANDY-VALLEY BLESSING-ET (VG-88-EX-MS-GMD-DOM)

BOSS IRON-ET (GM)

SPRINGHILL-OH IRON JEOPARDY (EX-91-EX-MS)

SPRINGHILL-OH BWM JEOPARDY (VG-87)

2-11 221d 20,610M 3.8% 789F 3.1% 646P INC

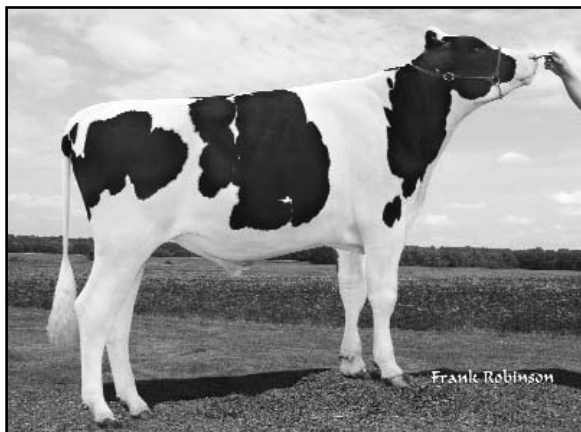
1-10 365d 24,110M 4.0% 967F 3.3% 797P 3X

SIRE: Mara-Thon BW Marshall-ET (VG-86-GM)

DAM: Springhill-OH Encore Julep (VG-88)

5-6 365d 23,430M 4.4% 1,038F 3.4% 805P 3X

- ◆ From one of Boss Iron's best daughters
- ◆ Confidence in balanced breeding
- ◆ Not many bred this way...pleasing genetics inside and out



	70 %Rel T	-2	-1	0	1	2	
STATURE							2.83 T
DAIRY FORM							2.74 O
STRENGTH							1.59 S
BODY DEPTH							1.90 D
RUMP WIDTH							2.57 W
RUMP ANGLE							0.10 S
LEGS SIDE VIEW							0.45 P
LEGS REAR VIEW							3.15 S
FOOT ANGLE							2.87 S
FEET & LEGS SCORE							2.27 H
FORE ATTACHMENT							3.01 S
REAR UDDER HEIGHT							4.55 H
UDDER CLEFT							2.34 S
UDDER DEPTH							1.79 S
FRONT TEAT PLACE							1.71 C
REAR TEAT PLACE							1.91 C
FRONT TEAT LENGTH							1.05 L

aA: 234 DMS: 561 Born: 10/11/2007
Breeder: Spring Hill Farm, Inc., Big Prairie, OH