



7HO9952 NOR-BERT MISSOULA

USA64788405 99% RHA-I TR TV TL TD



USDA Genomic Evaluation (08/09)					
(Rel 75%)	+975Milk	% Test	Lbs.	Net Merit (Rel 71%)	+\$ 679
Protein		+ .05	+ 42	Cheese Merit	+\$ 707
Fat		+ .10	+ 62	Fluid Merit	+\$ 632
SCS 2.69 (Rel 69%)	PL +6.2 (Rel 64%)			DPR +0.8 (Rel 63%)	
USDA/HA Genomic Evaluation (08/09)					
	+3.21Type	Rel 70%		GTPI™ +2108	
HA Composites	+2.60UDC	+2.75FLC	+1.79BD	+2.41D	
Calving Ease (%DBH) 08/09	Service Sire	6%	66% Rel		
	Daughter	6%	63% Rel		

RAMOS (GM)

STARTMORE RUDOLPH-ET (VG-85-CAN-GM)

HELDINE 47

MISS SHTTLE MAGGIE-SUE-ET (VG-88-EX-MS)

2-3 365d 36,950M 4.5% 1,649F 3.2% 1,175P

PICSTON SHOTTLE-ET (GM)

MISS MARSHALL MAGGIE-ET (VG-86-GMD-DOM)

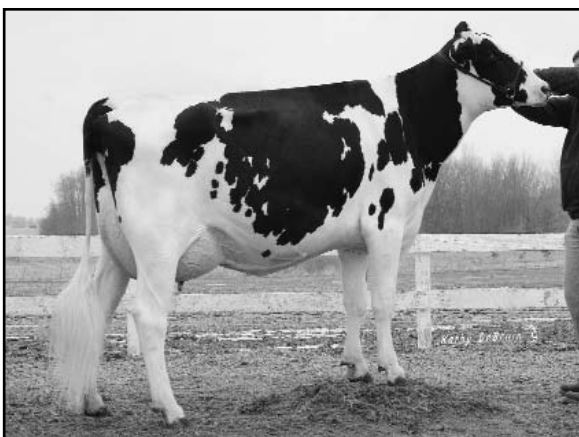
1-11 365d 43,260M 3.7% 1,617F 3.2% 1,398P

SIRE: Mara-Thon BW Marshall-ET (VG-86-GM)

DAM: Miss Wade Mystery-ET (VG-86-EX-MS-GMD-DOM)

2-0 365d 38,590M 3.6% 1,370F 3.2% 1,254P

- ◆ Three generations of Very Good 35,000-pound dams
- ◆ Elite fitness trait improver for PL and SCS
- ◆ High components with high yields



MISS SHTTLE MAGGIE-SUE-ET (VG-88-EX-MS)

	70 %Rel T	-2	-1	0	1	2	
STATURE							2.03 T
DAIRY FORM							2.62 O
STRENGTH							1.46 S
BODY DEPTH							1.80 D
RUMP WIDTH							1.43 W
RUMP ANGLE							1.80 H
LEGS SIDE VIEW							0.53 P
LEGS REAR VIEW							2.91 S
FOOT ANGLE							3.04 S
FEET & LEGS SCORE							2.89 H
FORE ATTACHMENT							3.83 S
REAR UDDER HEIGHT							4.20 H
UDDER CLEFT							0.63 S
UDDER DEPTH							1.95 S
FRONT TEAT PLACE							0.48 C
REAR TEAT PLACE							0.12 C
FRONT TEAT LENGTH							0.74 L

aA: 231 DMS: 123,126 Born: 11/21/2007
Breeder: Nor-Bert Farms Ltd., Bremen, IN