



**7HO9918 FOXBERRY JS MCFLY-ET**

USA138886772 98% RHA-I TR TV TL TD



USDA Genomic Evaluation (08/09)					
(Rel 73%)	+652Milk	% Test	Lbs.	Net Merit (Rel 70%)	+\$ 490
Protein		+ .06	+ 34	Cheese Merit	+\$ 519
Fat		+ .16	+ 66	Fluid Merit	+\$ 439
SCS 3.00 (Rel 68%)	PL +3.5 (Rel 62%)			DPR +1.8 (Rel 62%)	
USDA/HA Genomic Evaluation (08/09)					
	+2.62Type	Rel 70%		GTPI™ +1879	
HA Composites	+1.93UDC	+2.16FLC	+2.61BD	+2.33D	
Calving Ease (%DBH)	08/09	Service Sire	9%	65% Rel	
		Daughter	8%	62% Rel	
Sire Conception Rate	08/09		- 0.2	58% Rel	363 Obs

**APPLOUIS JET STREAM-ET (VG-87)**

**JOCKO BESN (GM)**

**MS HEARTBEAT JM MAGGIE MAE (EX-92-EX-MS-DOM)**

2-0 296d 26,910M 4.5% 1,215F 3.1% 830P  
 2-11 365d 37,070M 5.1% 1,887F 3.1% 1,136P  
 DTR: Ms Heartbeat Hm May 440-ET (EX-90-EX-MS)  
 1-11 365d 25,690M 4.7% 1,211F 3.5% 898P

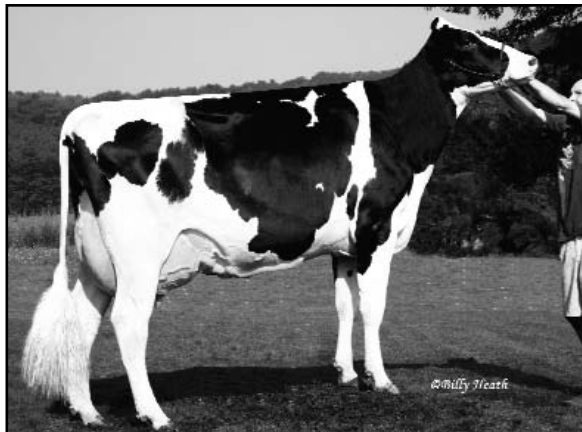
**APPLOUIS MANFRED JULIET-ET (VG-86-GMD-DOM)**

**COMESTAR OUTSIDE-ET (GM)**

**HEARTBEAT RUDOLPH MAGGIE (EX-94-3E-EX-MS)**

3-4 331d 32,110M 3.6% 1,145F 3.2% 1,014P  
 4-5 365d 39,030M 3.9% 1,503F 3.2% 1,244P  
 6-5 340d 35,100M 4.2% 1,476F 3.1% 1,105P  
 7-6 365d 39,250M 4.0% 1,589F 3.2% 1,258P  
 SIRE: Startmore Rudolph-ET (VG-85-CAN-GM)  
 DAM: Heartbeat Emory Maggie (GP-84)  
 2-7 325d 20,300M 4.1% 832F 3.2% 643P

- ◆ Excellent (92) dam and Excellent (94) grandam
- ◆ Type, components and fitness traits in a complete package
- ◆ Outstanding outcross pedigree: Jet Stream x Outside x Rudolph



**MS HEARTBEAT JM MAGGIE MAE (EX-92-EX-MS-DOM)**

70 %Rel T	-2	-1	0	1	2	
STATURE						3.27 T
DAIRY FORM						1.79 O
STRENGTH						1.94 S
BODY DEPTH						2.03 D
RUMP WIDTH						1.82 W
RUMP ANGLE						0.67 H
LEGS SIDE VIEW						0.73 P
LEGS REAR VIEW						2.96 S
FOOT ANGLE						2.41 S
FEET & LEGS SCORE						1.95 H
FORE ATTACHMENT						2.09 S
REAR UDDER HEIGHT						1.37 H
UDDER CLEFT						2.15 S
UDDER DEPTH						2.39 S
FRONT TEAT PLACE						2.77 C
REAR TEAT PLACE						2.35 C
FRONT TEAT LENGTH						0.68 S

aAa: 261 DMS: 456,246 Born: 10/18/2007  
 Breeder: J. Vanderfeltz & L. B. Hoelscher, Rushville, PA