



7HO9908 WHITTIER-CF GOLD LAREDO-ET

USA138842828 100% RHA-NA TR TV TL TD



| | | | | | |
|------------------------------------|-------------------|--------------|---------|---------------------|---------|
| USDA Genomic Evaluation (08/09) | | | | | |
| (Rel 75%) | +1,364Milk | % Test | Lbs. | Net Merit (Rel 72%) | +\$ 561 |
| Protein | | + .03 | + 48 | Cheese Merit | +\$ 574 |
| Fat | | + .09 | + 74 | Fluid Merit | +\$ 534 |
| SCS 2.80 (Rel 70%) | PL +3.8 (Rel 65%) | | | DPR -1.0 (Rel 64%) | |
| USDA/HA Genomic Evaluation (08/09) | | | | | |
| | +3.61Type | Rel 70% | | GTPI™ +2025 | |
| HA Composites | +2.61UDC | +2.36FLC | +2.66BD | +2.60D | |
| Calving Ease (%DBH) | 08/09 | Service Sire | 8% | 66% Rel | |
| | | Daughter | 8% | 62% Rel | |
| Sire Conception Rate | 08/09 | | - 1.5 | 76% Rel | 819 Obs |

BRAEDALE GOLDWYN (GM)

SHOREMAR JAMES (GP-81-CAN-GM)

BRAEDALE BALER TWINE-ET (VG-86-CAN)

PICSTON SHOTTLE-ET (GM)

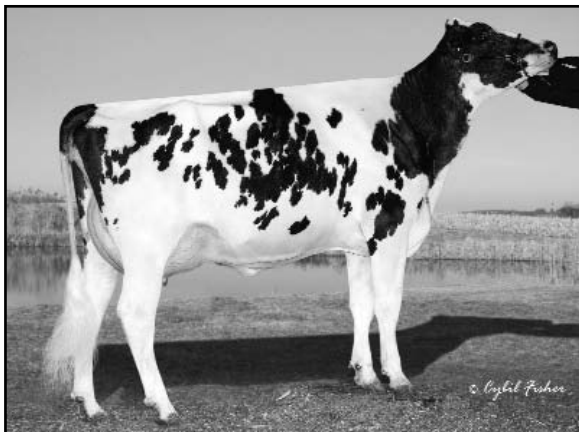
CALBRETT SHOTTLE LAURA-ET (VG-88-CAN)

2-0 365d 26,810M 4.2% 1,118F 3.2% 867P
 Full Sis.: Calbrett Shottle Lisamaree-ET (VG-87-CAN)
 Full Sis.: Calbrett Shottle Lela-ET (VG-86-CAN)
 Mat. Sis.: Calbrett Goldwyn Lilac-ET (VG-88-CAN)

LYLEHAVEN LILA Z (VG-89-CAN)

2-4 365d 35,686M 3.5% 1,259F 3.2% 1,127P
 4-5 365d 49,101M 4.0% 1,960M 3.3% 1,602P
 SIRE: Regancrest Elton Durham-ET (EX-90-GM)
 DAM: Lylehaven Form Laura-ET (EX-93-3E)
 Next Dam: Thiersant Lili Starbuck-ET (EX-94-4E)

- ◆ The first son from Shottle Laura
- ◆ Goldwyn x Shottle x Lila Z... need we say more
- ◆ Expect fancy calves and high scoring cows



CALBRETT SHOTTLE LAURA-ET (VG-88-CAN)

| 08/2009 USDA/HA Genomic PA STA'S | | | | | |
|----------------------------------|----|----|---|---|--------|
| 70 %Rel T | -2 | -1 | 0 | 1 | 2 |
| STATURE | | | | | 3.52 T |
| DAIRY FORM | | | | | 3.41 O |
| STRENGTH | | | | | 1.65 S |
| BODY DEPTH | | | | | 2.13 D |
| RUMP WIDTH | | | | | 1.66 W |
| RUMP ANGLE | | | | | 0.61 H |
| LEGS SIDE VIEW | | | | | 0.35 S |
| LEGS REAR VIEW | | | | | 2.22 S |
| FOOT ANGLE | | | | | 3.23 S |
| FEET & LEGS SCORE | | | | | 2.40 H |
| FORE ATTACHMENT | | | | | 3.21 S |
| REAR UDDER HEIGHT | | | | | 3.95 H |
| UDDER CLEFT | | | | | 2.07 S |
| UDDER DEPTH | | | | | 2.10 S |
| FRONT TEAT PLACE | | | | | 0.12 C |
| REAR TEAT PLACE | | | | | 0.44 C |
| FRONT TEAT LENGTH | | | | | 1.35 L |

aAa: 231 DMS: 345,234 Born: 09/14/2007
 Breeder: Todd J. Whittier & Cybil L. Fisher, West Sutton, MA