

7HO9893 MAPLE-DOWNS-I G W ATLANTIC-ET

CAN8956383 100% RHA-NA TV TL



USDA Genomic Evaluation (08/09)					
(Rel 78%)	+1,721Milk	% Test	Lbs.	Net Merit (Rel 74%)	+\$ 524
Protein		+ .01	+ 54	Cheese Merit	+\$ 527
Fat		- .01	+ 60	Fluid Merit	+\$ 513
SCS 2.82 (Rel 73%)	PL +2.5 (Rel 67%)			DPR -2.3 (Rel 66%)	
USDA/HA Genomic Evaluation (08/09)					
	+4.42Type	Rel 71%		GTPI™ +2079	
HA Composites	+4.09UDC	+3.27FLC	+2.88BD	+2.80D	
Calving Ease (%DBH)	08/09	Service Sire	8%	69% Rel	
		Daughter	7%	65% Rel	
Sire Conception Rate	08/09		+ 4.3	86% Rel	1,651 Obs

BRAEDALE GOLDWYN (GM)

SHOREMAR JAMES (GP-81-CAN-GM)

BRAEDALE BALER TWINE-ET (VG-86-CAN)

REGANCREST ELTON DURHAM-ET (EX-90-GM)

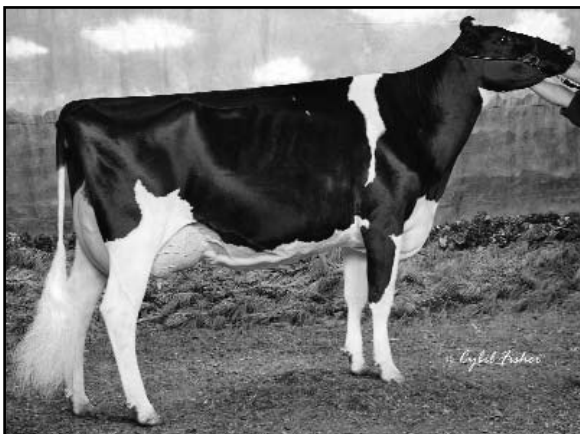
MD-DELIGHT DURHAM ATLEE-ET (EX-92-EX-MS-DOM)

2-8 365d 32,520M 4.3% 1,400F 3.1% 1,013P
 3-11 365d 38,290M 5.5% 2,091F 3.1% 1,177P
 All-American Sr 3Y Cow 2005

MD-DELIGHT STRM AMBERLEE-ET (VG-88-DOM)

2-2 365d 26,170M 3.7% 969F 3.0% 786P
 SIRE: Maughlin Storm-ET (EX-GM)
 DAM: MS Kingstead Chief Adeen-ET (EX-94-2E-EX-MS-DOM)
 3-5 310d 30,180M 4.0% 1,209F 3.6% 1,077P
 2x Member of All-American Produce of Dam
 with 3E97 All-World Full Sister Shoremar S Alicia
 4th Dam: C Aitenbrae Starbuck Ada (EX-94-2E-EX-MS-DOM)

- ◆ Reliable blood for the "Showcase" kind
- ◆ Durham Atlee breeding power
- ◆ Bred in the purple and has so much more to go with it at +2079 GTPI



MD-DELIGHT DURHAM ATLEE-ET (EX-92-EX-MS-DOM)

	71%Rel T	-2	-1	0	1	2	
STATURE							3.74 T
DAIRY FORM							4.18 O
STRENGTH							1.87 S
BODY DEPTH							2.25 D
RUMP WIDTH							2.04 W
RUMP ANGLE							1.66 H
LEGS SIDE VIEW							0.53 P
LEGS REAR VIEW							3.72 S
FOOT ANGLE							3.76 S
FEET & LEGS SCORE							3.28 H
FORE ATTACHMENT							5.22 S
REAR UDDER HEIGHT							5.52 H
UDDER CLEFT							3.06 S
UDDER DEPTH							3.64 S
FRONT TEAT PLACE							2.40 C
REAR TEAT PLACE							1.71 C
FRONT TEAT LENGTH							0.56 S

aAa: 342 Born: 03/06/2007
 Breeder: Richard & Shannon Allyn & Mike Heath, Canaan, CT
 Acquired From: Veithuis Farms Ltd., Osgood, ONT, CAN