



7HO9879 PINE-TREE SPEARMINT-ET

USA63685691 100% RHA-NA TR TV TD



USDA Genomic Evaluation (08/09)					
(Rel 77%)	+1,480Milk	% Test	Lbs.	Net Merit (Rel 74%)	+\$ 765
Protein		- .01	+ 42	Cheese Merit	+\$ 758
Fat		+ .17	+ 100	Fluid Merit	+\$ 771
SCS 2.72 (Rel 72%)	PL +6.3 (Rel 67%)			DPR +0.6 (Rel 66%)	
USDA/HA Genomic Evaluation (08/09)					
	+4.60Type	Rel 70%		GTPITM	+2330
HA Composites	+3.75UDC	+2.80FLC	+2.83BD	+2.86D	
Calving Ease (%DBH)	08/09	Service Sire	11%	77% Rel	96 Obs
		Daughter	8%	67% Rel	
Sire Conception Rate	08/09		+ 2.2	97% Rel	7,717 Obs

PICSTON SHOTTLE-ET (GM)

CAROL PRELUDE MTOTO-ET (GM)

CONDON AERO SHARON

COMESTAR OUTSIDE-ET (GM)

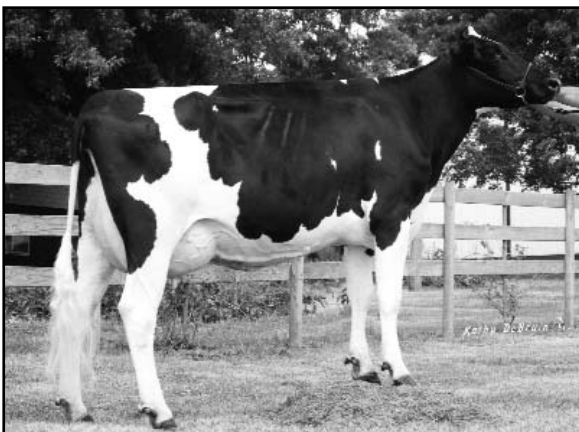
PINE-TREE OUTSIDE MINT-ET (VG-86)

2-3 365d 31,440M 4.4% 1,368F 3.1% 988P 3X

WESSWOOD-HC RUDY MISSY-ET (EX-92-3E-EX-MS-GMD-DOM)

2-1 323d 26,760M 4.1% 1,110F 3.1% 825P
 3-2 365d 37,470M 4.1% 1,533F 3.1% 1,168P
 4-11 365d 40,880M 4.1% 1,665F 3.2% 1,308P 3X
 SIRE: Startmore Rudolph-ET (VG-85-CAN-GM)
 DAM: Wesswood Elton Mimi (EX-90-GMD-DOM)
 3-5 365d 35,380M 3.3% 1,160F 3.0% 1,054P

- ◆ Great-looking black Shottle son
- ◆ Impressive pedigree inside and out at +2330 GTPITM
- ◆ Health, production and type are not mutually exclusive



PINE-TREE OUTSIDE MINT-ET (VG-86)

70 %Rel T	-2	-1	0	1	2	
STATURE						3.15 T
DAIRY FORM						3.18 O
STRENGTH						2.38 S
BODY DEPTH						2.58 D
RUMP WIDTH						2.73 W
RUMP ANGLE						0.21 S
LEGS SIDE VIEW						0.58 S
LEGS REAR VIEW						2.58 S
FOOT ANGLE						3.60 S
FEET & LEGS SCORE						3.01 H
FORE ATTACHMENT						4.73 S
REAR UDDER HEIGHT						5.09 H
UDDER CLEFT						3.05 S
UDDER DEPTH						3.39 S
FRONT TEAT PLACE						2.22 C
REAR TEAT PLACE						2.52 C
FRONT TEAT LENGTH						0.16 L

aAa: 615 DMS: 246,234 Born: 12/27/2006
 Breeder: Matthew J. Steiner, Rittman, OH