



**7HO9738 WHITTIER-FARMS SHOT ARES-ET**

USA138291976 100% RHA-NA TR TV TL TD



USDA Genomic Evaluation (08/09)					
(Rel 75%)	+900Milk	% Test	Lbs.	Net Merit (Rel 72%)	+\$ 515
Protein		+ .05	+ 39	Cheese Merit	+\$ 539
Fat		+ .24	+ 96	Fluid Merit	+\$ 473
SCS	2.74 (Rel 69%)	PL +1.9 (Rel 64%)		DPR	-2.4 (Rel 62%)
USDA/HA Genomic Evaluation (08/09)					
	+4.40Type	Rel 71%		GTPI™	+2054
HA Composites	+3.73UDC	+2.95FLC	+3.22BD		+3.06D
Calving Ease (%DBH)	08/09	Service Sire	10%	73% Rel	63 Obs
		Daughter	9%	64% Rel	
Sire Conception Rate	08/09		- 2.3	93% Rel	3,714 Obs

**PICSTON SHOTTLE-ET (GM)**

**CAROL PRELUDE MTOTO-ET (GM)**

**BKB ABBY-ET (EX-94-2E-EX-MS-DOM)**

4-3 365d 35,300M 4.1% 1,430F 3.4% 1,204P  
 5-9 365d 33,930M 3.8% 1,293F 3.4% 1,147P  
 Full Sis. BKB Amanda-ET (EX-92-EX-MS)  
 4-3 365d 41,480M 5.0% 2,082F 3.1% 1,279P 3X

**CONDON AERO SHARON**

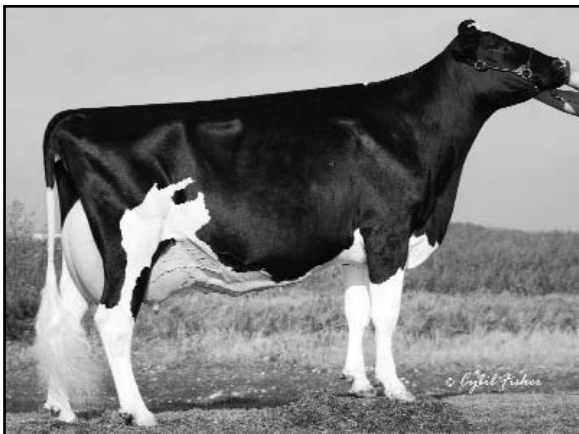
**REGANCREST ELTON DURHAM-ET (EX-90-GM)**

**SHOREMAR S ALICIA-ET (EX-97-3E-EX-MS)**

4-1 342d 31,680M 4.2% 1,319F 3.1% 976P  
 5-2 305d 30,480M 4.2% 1,265F 3.3% 1,004P  
 6-10 365d 35,760M 4.3% 1,544F 3.2% 1,147P  
 8-11 362d 38,250M 4.3% 1,650F 3.1% 1,198P

- ◆ The most exciting offering from the Alicia's to date
- ◆ Shottle x Excellent (94-2E) Abby x Excellent (97-3E)  
 Alicia x Excellent (94-2E) Ada
- ◆ Huge PAs for Type and GTPI

All-American 6Y+ Cow 2003  
 All-American 5Y Cow, 2001  
 Reserve All-American 125,000 Lb. Cow 2004  
 H.M. All-American 125,000 Lb. Cow 2005  
 SIRE: Donnandale Skychief-ET (GM)



**BKB ABBY-ET (EX-94-2E-EX-MS-DOM)**

08/2009 USDA/HA Genomic PA STA'S		71 %Rel T	-2	-1	0	1	2	
STATURE								3.59 T
DAIRY FORM								3.71 O
STRENGTH								2.57 S
BODY DEPTH								3.27 D
RUMP WIDTH								2.90 W
RUMP ANGLE								0.61 H
LEGS SIDE VIEW								0.96 S
LEGS REAR VIEW								2.08 S
FOOT ANGLE								3.21 S
FEET & LEGS SCORE								3.74 H
FORE ATTACHMENT								4.70 S
REAR UDDER HEIGHT								5.20 H
UDDER CLEFT								3.69 S
UDDER DEPTH								3.00 S
FRONT TEAT PLACE								2.06 C
REAR TEAT PLACE								1.88 C
FRONT TEAT LENGTH								0.60 L

aAa: 312 DMS: 234,246 Born: 02/19/2007  
 Breeder: Todd J. Whittier, West Sutton, MA