



**7HO9165 REGANCREST S BRAXTON-ET EX (92)**

USA61898423 100% RHA-NA TR TV TL TD



USDA Genomic Evaluation (08/09)					
(Rel 78%)	+2,030Milk	% Test	Lbs.	Net Merit (Rel 75%)	+\$ 367
Protein		- .04	+ 50	Cheese Merit	+\$ 340
Fat		- .06	+ 58	Fluid Merit	+\$ 404
SCS 3.09 (Rel 73%)	PL +0.3 (Rel 68%)			DPR -1.6 (Rel 66%)	
USDA/HA Genomic Evaluation (08/09)					
	+5.02Type	Rel 71%		GTPI™ +1994	
HA Composites	+3.57UDC	+3.86FLC	+5.00BD	+3.45D	
Calving Ease (%DBH)	08/09	Service Sire	10%	88% Rel	472 Obs
		Daughter	8%	67% Rel	
Sire Conception Rate	08/09		- 0.2	90% Rel	2,250 Obs

**PICSTON SHOTTLE-ET (GM)**

**CAROL PRELUDE MTOTO-ET (GM)**

**REGANCREST-PR BARBIE-ET (EX-92-EX-MS-GMD-DOM)**

2-6 365d 31,690M 3.9% 1,237F 3.1% 990P  
 H.M. All-American Jr 3Y Cow 2004  
 DTR: Regancrest Cinderella (EX-92-EX-MS-DOM)

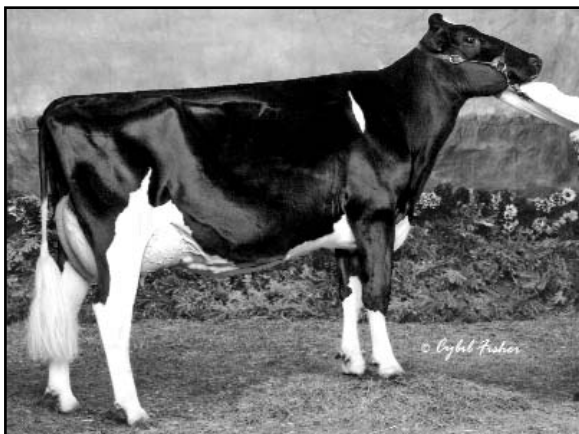
**CONDON AERO SHARON**

**REGANCREST ELTON DURHAM-ET (EX-90-GM)**

**REGANCREST JUROR BRINA-ET (EX-92-EX-MS-GMD)**

2-6 365d 30,090M 3.5% 1,057F 2.9% 880P  
 4-4 365d 40,640M 3.6% 1,478F 2.8% 1,140P  
 SIRE: Ked Juror-ET (GP-82-GM)

- ◆ Breed-leading Type Shottle son
- ◆ From the famed "Barbies" at Regancrest
- ◆ Made in the show-ring fashion with huge UDC and FLC values



08/2009 USDA/HA Genomic PA STA'S					
71 %Rel T	-2	-1	0	1	2
STATURE					5.37 T
DAIRY FORM					4.68 O
STRENGTH					4.34 S
BODY DEPTH					5.04 D
RUMP WIDTH					4.75 W
RUMP ANGLE					0.19 S
LEGS SIDE VIEW					0.18 S
LEGS REAR VIEW					3.66 S
FOOT ANGLE					4.31 S
FEET & LEGS SCORE					4.32 H
FORE ATTACHMENT					4.72 S
REAR UDDER HEIGHT					5.33 H
UDDER CLEFT					4.16 S
UDDER DEPTH					2.31 S
FRONT TEAT PLACE					2.60 C
REAR TEAT PLACE					2.62 C
FRONT TEAT LENGTH					2.16 L

aAa: 312 DMS: 123,234 Born: 11/12/2005  
 Breeder: Regancrest Farm, Waukon, IA

**REGANCREST-PR BARBIE-ET (EX-92-EX-MS-GMD-DOM)**