



**7HO10286 WABASH-WAY FORT ESKGROW-ET**

USA138968023 100% RHA-NA TR TV TL TD

USDA Genomic Evaluation (08/09)					
(Rel 75%)	+415Milk	% Test	Lbs.	Net Merit (Rel 71%)	+\$ 568
Protein		+ .11	+ 40	Cheese Merit	+\$ 628
Fat		+ .10	+ 41	Fluid Merit	+\$ 468
SCS 2.71 (Rel 70%)	PL +5.0 (Rel 63%)			DPR +1.8 (Rel 62%)	
USDA/HA Genomic Evaluation (08/09)					
	+3.08Type	Rel 69%		GTPITM +2032	
HA Composites	+3.20UDC	+1.83FLC	+3.03BD	+2.46D	
Calving Ease (%DBH)	08/09	Service Sire	7%	68% Rel	
		Daughter	5%	63% Rel	

**TO-MAR D-FORTUNE-ET (EX-91)**

**REGANCREST ELTON DURHAM-ET (EX-90-GM)**

**CROCKETT-ACRES ELITA-ET (VG-87-DOM)**

2-2 365d 39,010M 3.8% 1,480F 3.4% 1,309P

**C PLUSHANSKI BSTAR FLUTE-ET (EX-92-2E-EX-MS-GMD-DOM)**

**O-BEE MANFRED JUSTICE-ET (EX-94-GM)**

**CROCKETT-ACRES MTOT ELLY-ET (EX-90-EX-MS-GMD-DOM)**

2-4 321d 28,550M 4.5% 1,276F 3.1% 895P

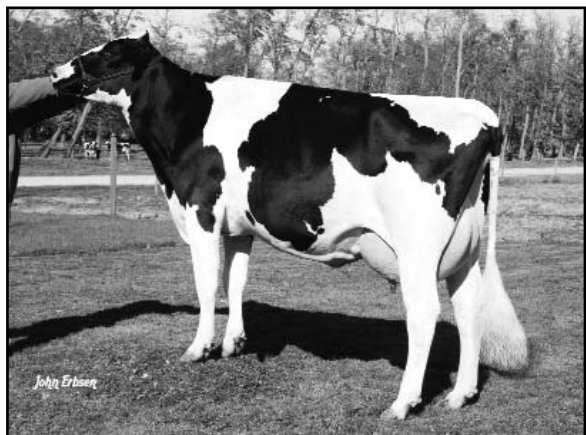
6-4 283d 38,840M 3.3% 1,286F 3.2% 1,229P

SIRE: Carol Prelude Mtoto-ET (GM)

DAM: Wauregan Rudolph Ellymae-ET (EX-90-EX-MS)

4-6 365d 40,210M 3.6% 1,455F 3.2% 1,299P 3X

- ◆ A FORTUNE from a family of high-ranking GTPi cows
- ◆ Talk about extreme... components, health, fertility and type
- ◆ Modern results with old-fashioned confidence



**CROCKETT-ACRES ELITA-ET (VG-87-DOM)**

	69 %Rel T	-2	-1	0	1	2	
STATURE							3.12 T
DAIRY FORM							1.52 O
STRENGTH							2.90 S
BODY DEPTH							2.93 D
RUMP WIDTH							3.05 W
RUMP ANGLE							0.11 S
LEGS SIDE VIEW							0.05 P
LEGS REAR VIEW							1.71 S
FOOT ANGLE							1.98 S
FEET & LEGS SCORE							2.07 H
FORE ATTACHMENT							3.47 S
REAR UDDER HEIGHT							4.32 H
UDDER CLEFT							2.82 S
UDDER DEPTH							2.95 S
FRONT TEAT PLACE							2.17 C
REAR TEAT PLACE							1.72 C
FRONT TEAT LENGTH							0.10 S

DMS: 345 Born: 01/23/2008  
Breeder: Wabash-Way Holsteins, New Weston, OH