



7HO10272 DE-SU FORK-ET

USA64700342 100% RHA-NA TR TV TL TD



USDA Genomic Evaluation (08/09)					
(Rel 75%)	+2,528Milk	% Test	Lbs.	Net Merit (Rel 71%)	+\$ 744
Protein		+ .01	+ 79	Cheese Merit	+\$ 748
Fat		+ .01	+ 96	Fluid Merit	+\$ 730
SCS 2.67 (Rel 70%)	PL +3.7 (Rel 63%)			DPR -3.1 (Rel 62%)	
USDA/HA Genomic Evaluation (08/09)					
	+4.05Type	Rel 69%		GTPI™ +2285	
HA Composites	+3.78UDC	+2.69FLC	+1.86BD	+1.98D	
Calving Ease (%DBH)	08/09	Service Sire	9%	68% Rel	
		Daughter	9%	63% Rel	

SANDY-VALLEY BOLTON-ET (EX-90)

LEXVOLD LUKE HERSHEL-ET (GM)

DE-SU 7012-ET (VG-87)

2-2 365d 38,346M 3.1% 1,209F 3.0% 1,171P 3X

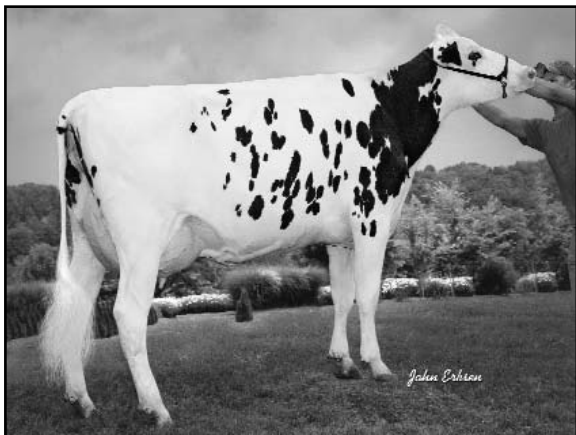
SANDY-VALLEY BLESSING-ET (VG-88-EX-MS-GMD-DOM)

PICSTON SHOTTLE-ET (GM)

DE-SU OMAN 6125-ET (GP-82)

2-0 365d 35,290M 3.3% 1,153F 2.9% 1,036P 3X
 SIRE: O-Bee Manfred Justice-ET (EX-94-GM)
 DAM: De-Su Bw Marshal Georgia-ET (VG-88-GMD-DOM)
 5-1 365d 42,490M 3.5% 1,503F 2.8% 1,173P 3X

- ◆ Huge milk pedigree for several generations
- ◆ Bolton, Shottle, O MAN lined up for success
- ◆ Huge GTPI and will add strength and endurance to your breeding program



DE-SU 7012-ET (VG-87)

	69%Rel T	-2	-1	0	1	2	
STATURE							2.80 T
DAIRY FORM							3.59 O
STRENGTH							0.46 S
BODY DEPTH							1.20 D
RUMP WIDTH							1.66 W
RUMP ANGLE							0.31 S
LEGS SIDE VIEW							0.08 S
LEGS REAR VIEW							2.59 S
FOOT ANGLE							3.40 S
FEET & LEGS SCORE							2.81 H
FORE ATTACHMENT							4.31 S
REAR UDDER HEIGHT							5.70 H
UDDER CLEFT							2.34 S
UDDER DEPTH							3.43 S
FRONT TEAT PLACE							1.78 C
REAR TEAT PLACE							2.15 C
FRONT TEAT LENGTH							0.71 L

aAa: 315 DMS: 345,234 Born: 01/16/2008
 Breeder: De Su Holsteins LLC, New Albin, IA