



**7HO10270 SCHILLVIEW BOLIVER GLAZE-ET**

USA65334838 100% RHA-NA TR TV TL TD



USDA Genomic Evaluation (08/09)					
(Rel 76%)	+1,469Milk	% Test	Lbs.	Net Merit (Rel 73%)	+\$ 673
Protein		+ .06	+ 60	Cheese Merit	+\$ 706
Fat		+ .03	+ 61	Fluid Merit	+\$ 615
SCS 2.82 (Rel 71%)	PL +4.9 (Rel 66%)			DPR +0.1 (Rel 65%)	
USDA/HA Genomic Evaluation (08/09)					
	+2.08Type	Rel 70%		GTPITM	+2035
HA Composites	+2.00UDC	+1.90FLC	+0.96BD	+1.00D	
Calving Ease (%DBH) 08/09		Service Sire	6%	69% Rel	
		Daughter	3%	65% Rel	

**END-ROAD PVF BOLIVER-ET (EX-94-GM)**

**OUT-JOCK CHOICE AMEL-ET (VG-85-GM)**

**SCHILLVIEW OMAN GLISTEN-ET (VG-85)**

2-2 365d 29,520M 3.9% 1,159F 3.2% 941P

**END-ROAD MATHIE BIG BANG-ET (VG-85-DOM)**

**O-BEE MANFRED JUSTICE-ET (EX-94-GM)**

**SCHILLVIEW MTOTO GIFT-ET (EX-91-2E-EX-MS-GMD-DOM)**

3-0 365d 36,670M 3.6% 1,331F 3.1% 1,124P

5-9 365d 34,110M 3.3% 1,120F 2.9% 1,006P

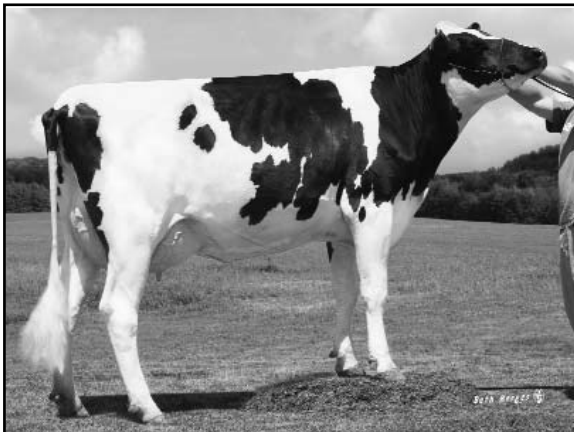
7-9 365d 34,440M 3.6% 1,231F 2.9% 984P

SIRE: Carol Prelude Mtoto-ET (GM)

DAM: Mikary Manfred Giesala-ET (VG-88-GMD-DOM)

4-11 365d 38,970M 3.5% 1,381F 3.1% 1,210P

- ◆ Nothing fancy here, just time tested genetics for greatness
- ◆ Made to produce average size cows, with great udders and feet and legs
- ◆ Strong GTPI values for health, components and freestall-friendly type



**SCHILLVIEW OMAN GLISTEN-ET (VG-85)**

	70 %Rel T	-2	-1	0	1	2	
STATURE							1.48 T
DAIRY FORM							0.91 O
STRENGTH							0.42 S
BODY DEPTH							0.25 D
RUMP WIDTH							0.81 W
RUMP ANGLE							0.45 H
LEGS SIDE VIEW							0.21 P
LEGS REAR VIEW							2.02 S
FOOT ANGLE							3.10 S
FEET & LEGS SCORE							1.54 H
FORE ATTACHMENT							2.66 S
REAR UDDER HEIGHT							1.68 H
UDDER CLEFT							0.92 S
UDDER DEPTH							2.54 S
FRONT TEAT PLACE							0.73 C
REAR TEAT PLACE							1.41 C
FRONT TEAT LENGTH							0.14 S

08/2009 USDA/HA Genomic PA STA'S  
 aAa: 342 DMS: 345,456 Born: 03/06/2008  
 Breeder: Michael J. & Karen M. Schiller, Freeport, MN