



7HO10265 NAVS SHARI MARICO-ET

USA64572399 100% RHA-NA TR TV TL TD



USDA Genomic Evaluation (08/09)					
(Rel 75%)	+953Milk	% Test	Lbs.	Net Merit (Rel 71%)	+\$ 726
Protein		+ .01	+ 30	Cheese Merit	+\$ 727
Fat		+ .17	+ 78	Fluid Merit	+\$ 720
SCS 2.73 (Rel 69%)	PL +5.7 (Rel 64%)			DPR +1.3 (Rel 62%)	
USDA/HA Genomic Evaluation (08/09)					
	+4.41Type	Rel 69%		GTPI™	+2290
HA Composites	+4.79UDC	+3.84FLC	+2.89BD		+2.49D
Calving Ease (%DBH)	08/09	Service Sire	7%	67% Rel	
		Daughter	5%	62% Rel	

REGANCREST-HHF MAC-ET (EX-92-GM)

MARA-THON BW MARSHALL-ET (VG-86-GM)

UFM-DUBS SHARI-ET (VG-87)

2-0 365d 31,444M 4.5% 1,424F 3.3% 1,030P 3X
 Mat.Sis.: Ufm-Dubs Eowyn-ET (VG-87)
 2-0 365d 25,720M 4.5% 1,164F 3.2% 824P

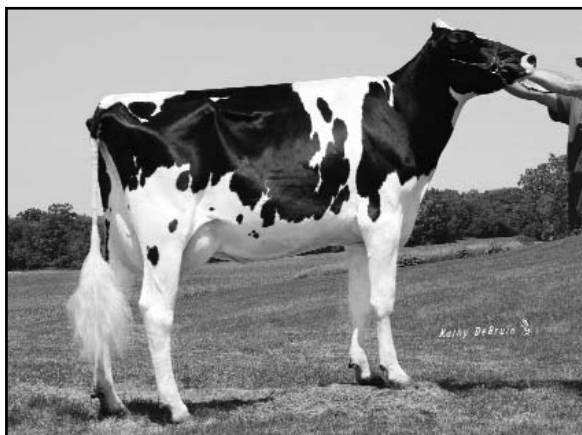
REGANCREST RUDOLPH DENA-ET (VG-89-EX-MS-DOM)

PICSTON SHOTTLE-ET (GM)

UFM-DUBS EROY (VG-87-DOM)

2-0 365d 28,620M 4.2% 1,200F 3.0% 846P
 4-6 305d 34,800M 4.4% 1,536F 2.8% 976P
 SIRE: Roylane Jordan-ET (EX-95-GM)
 DAM: Ufm-Dubs Sam Erin (EX-90-EX-MS-GMD-DOM)
 4-2 365d 39,450M 4.1% 1,631F 2.9% 1,145P

- ◆ Super sire stack: Mac x Shottle x Roy
- ◆ Extreme fitness traits: 2.73SCS, +5.7DPR, +1.3DPR
- ◆ Elite rank at +2290GTPI and +726NM\$ with +4.41T



UFM-DUBS SHARI-ET (VG-87)

	69 %Rel T	-2	-1	0	1	2	
STATURE							3.87 T
DAIRY FORM							2.55 O
STRENGTH							1.64 S
BODY DEPTH							1.75 D
RUMP WIDTH							2.82 W
RUMP ANGLE							0.19 S
LEGS SIDE VIEW							1.18 P
LEGS REAR VIEW							3.91 S
FOOT ANGLE							4.38 S
FEET & LEGS SCORE							3.95 H
FORE ATTACHMENT							5.70 S
REAR UDDER HEIGHT							6.02 H
UDDER CLEFT							3.79 S
UDDER DEPTH							5.11 S
FRONT TEAT PLACE							3.17 C
REAR TEAT PLACE							3.38 C
FRONT TEAT LENGTH							1.00 S

aAa: 132 DMS: 123 Born: 02/29/2008
 Breeder: Nathaniel Janssen, Wauconda, IL
 Acquired From: Sugar Creek Dairy, Elkhorn, WI