



**7HO10260 HAMMER-CREEK PRONT KRUSE-TW**

USA64341460 100% RHA-NA TR TV TL TD



<b>USDA Genomic Evaluation (08/09)</b>					
(Rel 70%)	+1,233Milk	% Test	Lbs.	Net Merit (Rel 66%)	+\$ 553
Protein		+ .01	+ 40	Cheese Merit	+\$ 557
Fat		+ .11	+ 74	Fluid Merit	+\$ 543
SCS 3.08 (Rel 64%)	PL +4.2 (Rel 58%)			DPR +1.2 (Rel 55%)	
<b>USDA/HA Genomic Evaluation (08/09)</b>					
	+2.98Type	Rel 70%		GTPI™ +1986	
HA Composites	+2.81UDC	+1.80FLC	+2.21BD	+2.16D	
Calving Ease (%DBH) 08/09		Service Sire	10%	63% Rel	
		Daughter	8%	54% Rel	

**WINDY-KNOLL-VIEW PRONTO-ET (EX-95)**

**COMESTAR OUTSIDE-ET (GM)**

**WINDY-KNOLL-VIEW PROMIS-ET (EX-95-2E-EX-MS-GMD-DOM)**

**HAMMER-CREEK ZADE KLASSIC (VG-86)**

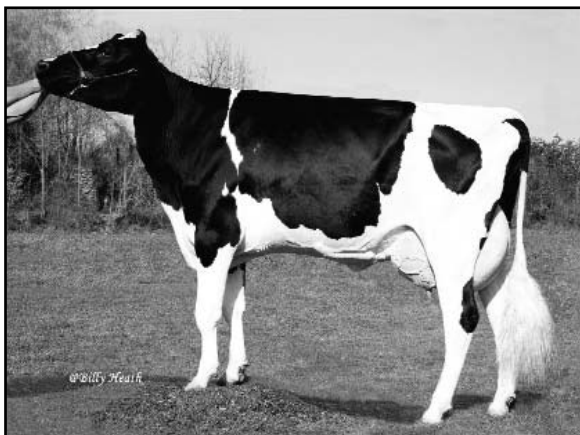
2-2 365d 32,270M 3.8% 1,217F 3.2% 1,018P  
 3-11 305d 32,360M 3.5% 1,128F 3.0% 968P  
 5-5 305d 32,560M 2.9% 960F 2.8% 911P  
 DTR: Hammer-Creek Gold Klassy-ET (VG-86)  
 1-11 365d 29,530M 3.5% 1,040F 3.4% 909P

**FUTURLAND ZADE-ET (VG-85)**

**HAMMER-CREEK KATELYN-ET (EX-90-EX-MS-GMD)**

1-10 365d 31,860M 3.9% 1,257F 2.8% 907P  
 3-2 361d 44,240M 4.2% 1,871F 2.9% 1,285P  
 4-4 365d 35,210M 3.5% 1,247F 2.9% 1,009P  
 6-0 361d 31,470M 3.5% 1,089F 2.7% 840P  
 SIRE: Carol Prelude Mtoto-ET (GM)  
 DAM: Ricecrest Formation Kate-ET (GP-83-GMD)  
 4-9 365d 53,440M 3.3% 1,753F 2.7% 1,468P

- ◆ Outcross sire stack: PRONTO x Zade x Mtoto
- ◆ Excellent productive life and +2.98T
- ◆ Great quality from a different pedigree



**HAMMER-CREEK ZADE KLASSIC (VG-86)**

	70 %Rel T	-2	-1	0	1	2	
STATURE							2.75 T
DAIRY FORM							1.81 O
STRENGTH							1.53 S
BODY DEPTH							1.69 D
RUMP WIDTH							2.00 W
RUMP ANGLE							1.28 S
LEGS SIDE VIEW							1.25 P
LEGS REAR VIEW							1.43 S
FOOT ANGLE							2.04 S
FEET & LEGS SCORE							1.90 H
FORE ATTACHMENT							3.19 S
REAR UDDER HEIGHT							3.61 H
UDDER CLEFT							1.31 S
UDDER DEPTH							2.85 S
FRONT TEAT PLACE							2.72 C
REAR TEAT PLACE							1.93 C
FRONT TEAT LENGTH							1.05 S

aAa: 426 DMS: 345,456 Born: 03/28/2008  
 Breeder: Lavern Martin, Lebanon, PA