



**7HO10216 OPSAL PONTIAC SCULPTOR-ET**

USA63683070 100% RHA-NA TR TV TL TD



|                                    |                   |              |         |                     |         |
|------------------------------------|-------------------|--------------|---------|---------------------|---------|
| USDA Genomic Evaluation (08/09)    |                   |              |         |                     |         |
| (Rel 77%)                          | +570Milk          | % Test       | Lbs.    | Net Merit (Rel 73%) | +\$ 551 |
| Protein                            |                   | + .03        | + 26    | Cheese Merit        | +\$ 570 |
| Fat                                |                   | + .07        | + 40    | Fluid Merit         | +\$ 519 |
| SCS 2.69 (Rel 72%)                 | PL +4.8 (Rel 65%) |              |         | DPR +2.0 (Rel 64%)  |         |
| USDA/HA Genomic Evaluation (08/09) |                   |              |         |                     |         |
|                                    | +4.01Type         | Rel 70%      |         | GTPITM              | +2060   |
| HA Composites                      | +3.34UDC          | +3.77FLC     | +2.89BD |                     | +2.63D  |
| Calving Ease (%DBH) 08/09          |                   | Service Sire | 7%      | 68% Rel             |         |
|                                    |                   | Daughter     | 6%      | 64% Rel             |         |

**KLUMBS DURHAM PONTIAC (EX-92)**

**REGANCREST ELTON DURHAM-ET (EX-90-GM)**

**OPSAL FINLEY SAGE-ET (EX-92-EX-MS-DOM)**

2-3 319d 26,540M 3.8% 1,008F 3.1% 816P  
 3-3 365d 39,910M 3.8% 1,512F 3.0% 1,190P  
 Full Sis.: Opsal Finley Satin-ET (VG-87)  
 3-9 365d 38,320M 3.5% 1,352F 3.1% 1,190P

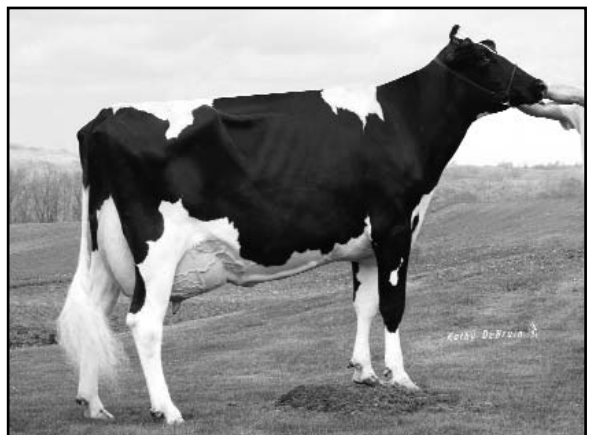
**KLUMBS EMORY PONTIAC (EX-93-3E-EX-MS-GMD-DOM)**

**OPSAL FINLEY-ET (GM)**

**OPSAL RUDOLPH SADIE-ET (EX-92-2E-EX-MS-GMD-DOM)**

2-1 365d 30,370M 4.7% 1,424F 3.1% 952P  
 3-2 365d 38,420M 5.3% 2,026F 3.2% 1,248P  
 5-10 365d 38,120M 4.8% 1,847F 3.3% 1,245P  
 SIRE: Startmore Rudolph-ET (VG-85-CAN-GM)  
 DAM: Opsal Mark Sapphire-ET (EX-93-EX-MS-GMD-DOM)  
 4-6 365d 34,390M 4.4% 1,507F 3.2% 1,109P

- ◆ Elite GTPi PONTIAC son in the breed at +2060
- ◆ Elite type and fitness traits
- ◆ Shottle, Goldwyn and O MAN free pedigree with three generations of Excellent dams



**OPSAL FINLEY SAGE-ET (EX-92-EX-MS-DOM)**

|                   | 70%Rel T | -2 | -1 | 0 | 1 | 2 |        |
|-------------------|----------|----|----|---|---|---|--------|
| STATURE           |          |    |    |   |   |   | 3.66 T |
| DAIRY FORM        |          |    |    |   |   |   | 2.17 O |
| STRENGTH          |          |    |    |   |   |   | 2.13 S |
| BODY DEPTH        |          |    |    |   |   |   | 2.12 D |
| RUMP WIDTH        |          |    |    |   |   |   | 2.58 W |
| RUMP ANGLE        |          |    |    |   |   |   | 0.61 S |
| LEGS SIDE VIEW    |          |    |    |   |   |   | 1.79 P |
| LEGS REAR VIEW    |          |    |    |   |   |   | 4.66 S |
| FOOT ANGLE        |          |    |    |   |   |   | 3.35 S |
| FEET & LEGS SCORE |          |    |    |   |   |   | 3.94 H |
| FORE ATTACHMENT   |          |    |    |   |   |   | 3.84 S |
| REAR UDDER HEIGHT |          |    |    |   |   |   | 4.46 H |
| UDDER CLEFT       |          |    |    |   |   |   | 3.32 S |
| UDDER DEPTH       |          |    |    |   |   |   | 3.18 S |
| FRONT TEAT PLACE  |          |    |    |   |   |   | 2.18 C |
| REAR TEAT PLACE   |          |    |    |   |   |   | 3.10 C |
| FRONT TEAT LENGTH |          |    |    |   |   |   | 0.15 S |

aAa: 621 DMS: 123,234 Born: 02/01/2008  
 Breeder: Troy D. Opsal, Blue Mounds, WI