



**7HO10205 WINTERLANCE REDUX**

USA139212228 99% RHA-I TR TV TL TD



USDA Genomic Evaluation (08/09)					
(Rel 75%)	+1,121Milk	% Test	Lbs.	Net Merit (Rel 72%)	+\$ 682
Protein		+ .05	+ 47	Cheese Merit	+\$ 709
Fat		+ .08	+ 63	Fluid Merit	+\$ 633
SCS 2.50 (Rel 70%)	PL +5.7 (Rel 65%)			DPR +0.1 (Rel 64%)	
USDA/HA Genomic Evaluation (08/09)					
	+3.46Type	Rel 70%		GTPI™ +2143	
HA Composites	+2.91UDC	+2.73FLC	+2.66BD	+2.63D	
Calving Ease (%DBH)	08/09	Service Sire	8%	67% Rel	
		Daughter	8%	63% Rel	

**RAMOS (GM)**

**STARTMORE RUDOLPH-ET (VG-85-CAN-GM)**

**HELDINE 47**

**PINE-TREE MINNIE SHEILA-ET (VG-88-EX-MS-DOM)**

2-3 365d 34,484M 4.1% 1,409F 3.2% 1,100P

**PICSTON SHOTTLE-ET (GM)**

**PINE-TREE FINLEY MINNIE-ET (VG-88-EX-MS)**

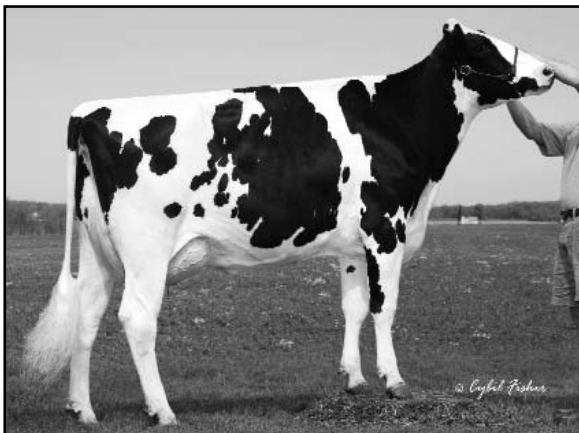
2-0 305d 25,080M 3.4% 858F 3.1% 776P 3X

SIRE: Opsal Finley-ET (GM)

DAM: Wesswood-HC Rudy Missy-ET (EX-92-GMD-DOM)

4-11 365d 40,880M 4.1% 1,665F 3.2% 1,308P 3X

- ◆ Elite type Ramos son: +3.46T, +2.91UDC, +2.73FLC
- ◆ Super sire stack - Ramos x Shottle x Finley
- ◆ Dam is one of the best Shottles in the U.S.



**PINE-TREE MINNIE SHEILA-ET (VG-88-EX-MS-DOM)**

08/2009 USDA/HA Genomic PA STA'S					
70 %Rel T	-2	-1	0	1	2
STATURE					3.12 T
DAIRY FORM					2.22 O
STRENGTH					2.16 S
BODY DEPTH					2.39 D
RUMP WIDTH					1.99 W
RUMP ANGLE					2.04 H
LEGS SIDE VIEW					0.07 P
LEGS REAR VIEW					3.87 S
FOOT ANGLE					2.38 S
FEET & LEGS SCORE					2.87 H
FORE ATTACHMENT					3.48 S
REAR UDDER HEIGHT					3.32 H
UDDER CLEFT					1.70 S
UDDER DEPTH					3.21 S
FRONT TEAT PLACE					1.24 C
REAR TEAT PLACE					1.27 C
FRONT TEAT LENGTH					1.12 L

aA: 246 DMS: 126,123 Born: 04/22/2008  
Breeder: Debra L. West, Scandinavia, WI