



7HO10183 SHEMA MAC CHRYSLER-ET

USA64465030 100% RHA-NA

USDA Genomic Evaluation (08/09)					
(Rel 77%)	+1,535Milk	% Test	Lbs.	Net Merit (Rel 73%)	+\$ 656
Protein		+ .00	+ 46	Cheese Merit	+\$ 653
Fat		+ .09	+ 79	Fluid Merit	+\$ 656
SCS 2.69 (Rel 71%)	PL +3.6 (Rel 66%)			DPR +0.8 (Rel 64%)	
USDA/HA Genomic Evaluation (08/09)					
	+3.82Type	Rel 70%		GTPI™	+2145
HA Composites	+3.21UDC	+1.99FLC	+2.63BD		+2.80D
Calving Ease (%DBH)	08/09	Service Sire	7%	69% Rel	
		Daughter	6%	63% Rel	

REGANCREST-HHF MAC-ET (EX-92-GM)

MARA-THON BW MARSHALL-ET (VG-86-GM)

RALMA SHOTTLE CAMOUFLAGE-ET (VG-88)

2-3 365d 32,535M 3.9% 1,292F 3.3% 1,074P

REGANCREST RUDOLPH DENA-ET (VG-89-EX-MS-DOM)

PICSTON SHOTTLE-ET (GM)

RALMA FINLEY C-F CHOICE-ET (VG-88-DOM)

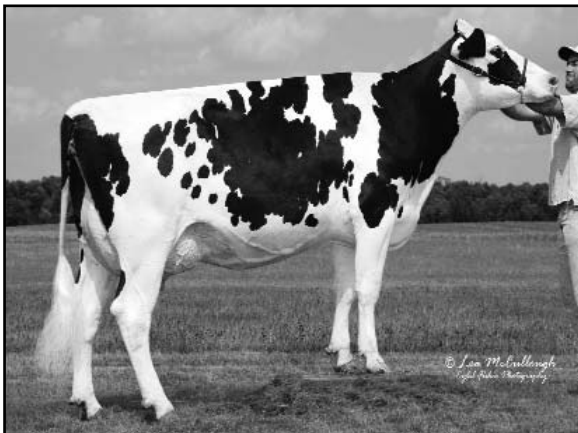
2-3 365d 40,980M 3.6% 1,476F 3.1% 1,286P 3X

SIRE: Opsal Finley-ET (GM)

DAM: Ralma Christmas Fudge-ET (VG-88-GMD-DOM)

2-3 365d 31,810M 4.1% 1,292F 3.0% 967P

- ◆ From the famous Juror Faith cow family
- ◆ Nearly +4.00 for type, plus on components and low SCS
- ◆ Outstanding health traits, type and components all in one calving ease package



RALMA SHOTTLE CAMOUFLAGE-ET (VG-88)

	70 %Rel T	-2	-1	0	1	2	
STATURE							3.13 T
DAIRY FORM							3.54 O
STRENGTH							1.85 S
BODY DEPTH							2.37 D
RUMP WIDTH							2.49 W
RUMP ANGLE							1.82 H
LEGS SIDE VIEW							1.34 S
LEGS REAR VIEW							2.84 S
FOOT ANGLE							2.28 S
FEET & LEGS SCORE							2.04 H
FORE ATTACHMENT							3.82 S
REAR UDDER HEIGHT							3.82 H
UDDER CLEFT							3.29 S
UDDER DEPTH							3.17 S
FRONT TEAT PLACE							2.21 C
REAR TEAT PLACE							2.34 C
FRONT TEAT LENGTH							0.21 S

aAa: 231 DMS: 123,234 Born: 08/26/2007
Breeder: Marlin J. Bontrager, Kalona, IA