



**7HO10176 MR REGELCREEK SHOT AL-ET**

USA53557278 100% RHA-NA TV



USDA Genomic Evaluation (08/09)					
(Rel 74%)	+1,804Milk	% Test	Lbs.	Net Merit (Rel 71%)	+\$ 870
Protein		+ .05	+ 67	Cheese Merit	+\$ 894
Fat		+ .17	+ 112	Fluid Merit	+\$ 824
SCS 2.82 (Rel 69%)	PL +6.0 (Rel 65%)			DPR -1.4 (Rel 64%)	
USDA/HA Genomic Evaluation (08/09)					
	+4.01Type	Rel 70%		GTPI™ +2400	
HA Composites	+3.72UDC	+3.57FLC	+1.40BD	+1.87D	
Calving Ease (%DBH)	08/09	Service Sire	6%	66% Rel	
		Daughter	7%	62% Rel	
Sire Conception Rate	08/09		+ 0.6	83% Rel	1,235 Obs

**PICSTON SHOTTLE-ET (GM)**

**CAROL PRELUDE MTOTO-ET (GM)**

**MD-MAPLE-DELL GOLD AILEY-ET (VG-85)**

2-2 305d 20,480M 4.1% 841F 3.1% 627P

**CONDON AERO SHARON**

**BRAEDALE GOLDWYN (GM)**

**MS M-M-D NOBEL ARUBA (EX-94-2E-EX-MS-DOM)**

2-1 365d 23,670M 3.8% 891F 3.0% 707P  
 3-5 365d 34,540M 4.3% 1,480F 3.1% 1,079P  
 5-1 365d 29,440M 4.5% 1,322F 3.2% 953P

SIRE: Markwell Nobel-ET

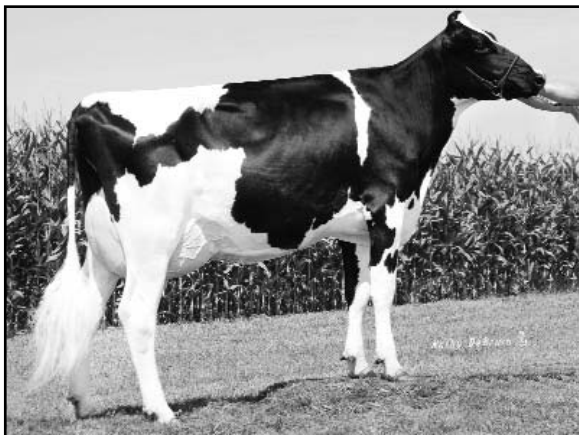
DAM: MD-Delight Storm Adeline-ET (VG-88-DOM)

2-1 365d 25,340M 4.6% 1,176F 3.4% 863P

4th Dam: MS Kingstead Chief Adeen-ET (EX-94-DOM)

3-5 310d 30,180M 4.0% 1,209F 3.4% 1,020P

- ◆ Breed elite GTPI at +2400
- ◆ Exceptional type at +4.01T, +3.72UDC and +3.57FLC
- ◆ +870 NM\$...a sire of sons for Select



**MD-MAPLE-DELL GOLD AILEY-ET (VG-85)**

	70 %Rel T	-2	-1	0	1	2	
STATURE							2.15 T
DAIRY FORM							3.30 O
STRENGTH							0.43 S
BODY DEPTH							0.73 D
RUMP WIDTH							1.07 W
RUMP ANGLE							0.25 S
LEGS SIDE VIEW							0.00 S
LEGS REAR VIEW							3.41 S
FOOT ANGLE							3.38 S
FEET & LEGS SCORE							4.25 H
FORE ATTACHMENT							4.84 S
REAR UDDER HEIGHT							5.62 H
UDDER CLEFT							2.45 S
UDDER DEPTH							2.98 S
FRONT TEAT PLACE							1.57 C
REAR TEAT PLACE							1.94 C
FRONT TEAT LENGTH							0.04 L

aAa: 243 DMS: 234,123 Born: 09/14/2007  
 Breeder: W. & D. Langreck & G. & J. Pagel, West Union, IA