



7HO10165 OCEAN-VIEW ZEN SIR JON-ET

USA138672894 100% RHA-NA TR TV TL TD

USDA Genomic Evaluation (08/09)					
(Rel 77%)	+1,066Milk	% Test	Lbs.	Net Merit (Rel 74%)	+\$ 518
Protein		+ .04	+ 43	Cheese Merit	+\$ 541
Fat		+ .12	+ 71	Fluid Merit	+\$ 478
SCS 2.74 (Rel 73%)	PL +3.0 (Rel 68%)			DPR +0.7 (Rel 67%)	
USDA/HA Genomic Evaluation (08/09)					
	+2.89Type	Rel 71%		GTPI™ +1910	
HA Composites	+1.99UDC	+1.09FLC	+2.04BD	+1.98D	
Calving Ease (%DBH)	08/09	Service Sire	11%	69% Rel	
		Daughter	9%	65% Rel	

OCEAN-VIEW ZENITH-TW-ET (GM)

REGANCREST ELTON DURHAM-ET (EX-90-GM)

KED DUSTER JULIENNA-ET (EX-94-3E-EX-MS-GMD-DOM)

OCEAN-VIEW MANDEL ZANDRA (EX-95-2E-EX-MS-GMD-DOM)

2-1	365d	28,110M	3.5%	995F	3.2%	901P
3-3	365d	33,420M	3.4%	1,127F	3.2%	1,075P
4-9	365d	37,010M	3.6%	1,325F	3.1%	1,135P
7-1	365d	44,030M	3.7%	1,642F	3.0%	1,320P

PEN-COL DUSTER-ET (VG-89-GM)

KED MARK JUSTINE (VG-88-GMD-DOM)

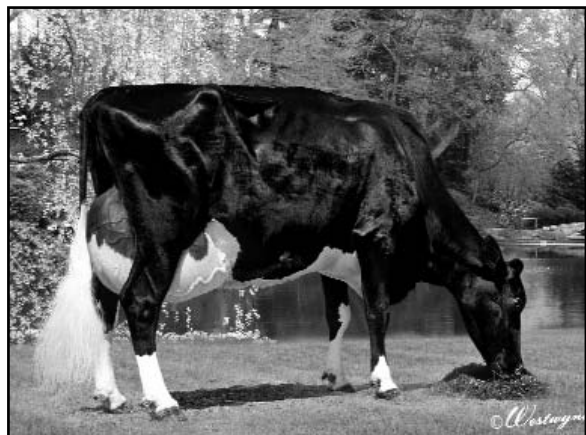
3-4	365d	34,650M	3.8%	1,314F	3.0%	1,026P
5-0	365d	38,440M	4.0%	1,544F	3.0%	1,155P
6-10	365d	40,980M	4.0%	1,634F	3.0%	1,242P
8-0	365d	37,870M	3.9%	1,480F	3.0%	1,132P

SIRE: Walkway Chief Mark (VG-87-GM)

DAM: Ked Sexation Jasmine (VG-86)

Lifetime: 119,000M

- ◆ Elite ZENITH son at +1910 GTPI
- ◆ Back-to-back dams over 40,000M, 1,600F and 1,200P
- ◆ SIR JON is a maternal brother to Elite GTPI sire Jeeves



KED DUSTER JULIENNA-ET (EX-94-3E-EX-MS-GMD-DOM)

	71 %Rel T	-2	-1	0	1	2	
STATURE							2.90 T
DAIRY FORM							3.97 O
STRENGTH							0.44 S
BODY DEPTH							2.08 D
RUMP WIDTH							1.72 W
RUMP ANGLE							0.48 H
LEGS SIDE VIEW							2.10 S
LEGS REAR VIEW							1.91 S
FOOT ANGLE							0.52 S
FEET & LEGS SCORE							1.54 H
FORE ATTACHMENT							2.20 S
REAR UDDER HEIGHT							1.67 H
UDDER CLEFT							2.86 S
UDDER DEPTH							2.31 S
FRONT TEAT PLACE							2.25 C
REAR TEAT PLACE							3.10 C
FRONT TEAT LENGTH							0.22 S

aAa: 132 DMS: 123 Born: 07/08/2007
Breeder: Ocean View Farms, Windsor, CA