



**7HO10160 HENDEL MALIBU-ET**

USA65283044 100% RHA-NA TV TL TD



USDA Genomic Evaluation (08/09)					
(Rel 76%)	+1,199Milk	% Test	Lbs.	Net Merit (Rel 72%)	+\$ 406
Protein		+ .00	+ 37	Cheese Merit	+\$ 407
Fat		- .06	+ 28	Fluid Merit	+\$ 400
SCS 2.81 (Rel 70%)	PL +3.2 (Rel 66%)			DPR -0.3 (Rel 64%)	
USDA/HA Genomic Evaluation (08/09)					
	+3.78Type	Rel 70%		GTPITM +1893	
HA Composites	+3.28UDC	+2.18FLC	+2.22BD	+2.46D	
Calving Ease (%DBH) 08/09	Service Sire	10%	67% Rel		
	Daughter	7%	63% Rel		

**END-ROAD PVF BOLIVER-ET (EX-94-GM)**

**OUT-JOCK CHOICE AMEL-ET (VG-85-GM)**

**HENDEL SHOTTLE MIAMI-ET (VG-88-DOM)**

2-1 365d 34,010M 3.7% 1,260F 2.8% 962P

**END-ROAD MATHIE BIG BANG-ET (VG-85-DOM)**

**PICSTON SHOTTLE-ET (GM)**

**HENDEL DURHAM MITZI 1390 (EX-90-EX-MS-GMD-DOM)**

1-10 298d 26,560M 3.4% 896F 3.0% 798P 3X

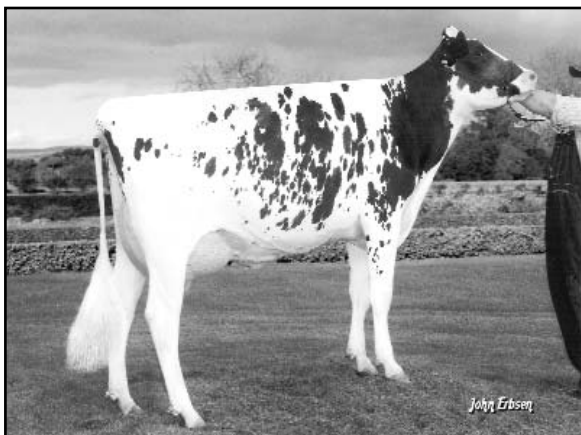
2-10 365d 42,810M 3.6% 1,522F 3.0% 1,299P 3X

SIRE: Regancrest Elton Durham-ET (EX-90-GM)

DAM: Hendel Mnfred Mistique 1149 (VG-88-DOM)

3-2 365d 42,360M 3.7% 1,548F 2.9% 1,225P 3X

- ◆ Boliver son over +3.75T
- ◆ From the famed "Mitzi" cow family at Hendel's
- ◆ Bred for udder quality and strong feet & legs



**HENDEL SHOTTLE MIAMI-ET (VG-88-DOM)**

	70 %Rel T	-2	-1	0	1	2	
STATURE							2.63 T
DAIRY FORM							2.12 O
STRENGTH							1.70 S
BODY DEPTH							1.88 D
RUMP WIDTH							2.01 W
RUMP ANGLE							0.45 H
LEGS SIDE VIEW							1.08 S
LEGS REAR VIEW							1.96 S
FOOT ANGLE							2.20 S
FEET & LEGS SCORE							2.74 H
FORE ATTACHMENT							4.18 S
REAR UDDER HEIGHT							3.95 H
UDDER CLEFT							2.89 S
UDDER DEPTH							3.01 S
FRONT TEAT PLACE							2.32 C
REAR TEAT PLACE							1.61 C
FRONT TEAT LENGTH							0.62 L

aAa: 135 DMS: 345,135 Born: 12/17/2007  
Breeder: Hendel Farms, Caledonia, MN