



7HO10148 GOLD-N-OAKS RAMOS FLAX-ET

USA65499453 98% RHA-I TV TL TD



USDA Genomic Evaluation (08/09)					
(Rel 73%)	+1,941Milk	% Test	Lbs.	Net Merit (Rel 69%)	+\$ 739
Protein		+ .00	+ 58	Cheese Merit	+\$ 736
Fat		- .02	+ 66	Fluid Merit	+\$ 738
SCS 2.49 (Rel 68%)	PL +5.9 (Rel 63%)			DPR +0.0 (Rel 61%)	
USDA/HA Genomic Evaluation (08/09)					
	+2.95Type	Rel 70%		GTPI™	+2170
HA Composites	+2.68UDC	+1.76FLC	+1.74BD	+2.38D	
Calving Ease (%DBH) 08/09	Service Sire	7%	65% Rel		
	Daughter	5%	61% Rel		

RAMOS (GM)

STARTMORE RUDOLPH-ET (VG-85-CAN-GM)

HELDINE 47

GOLD-N-OAKS SWEET DEAL-ET (VG-87)

2-3 365d 38,540M 5.1% 1,960F 3.1% 1,193P

PICSTON SHOTTLE-ET (GM)

GOLD-N-OAKS T GOODGIRL-ET (VG-88-EX-MS-DOM)

2-1 365d 32,100M 5.8% 1,876F 3.0% 979P

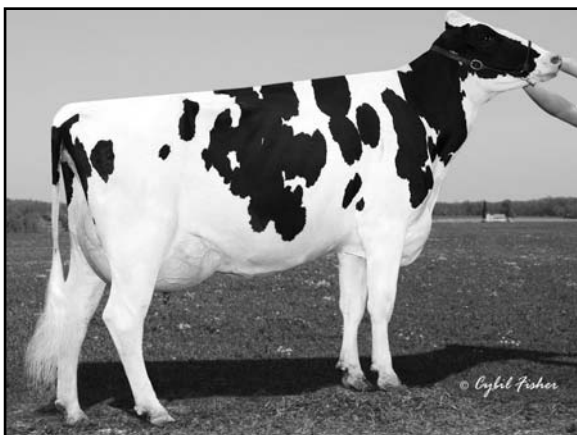
3-8 365d 33,810M 4.7% 1,599F 3.1% 1,065P

SIRE: Timlynn Throne-ET (GM)

DAM: Gold-N-Oaks J-F Go-Girl-ET (EX-90-GMD-DOM)

2-4 365d 35,990M 4.8% 1,735F 3.1% 1,118P

- ◆ Elite sire with +739NM\$ and +2170GTPI
- ◆ The right "type" of linear
- ◆ Time-tested sire stack - Ramos x Shottle x Throne x Juror Ford x Duster



GOLD-N-OAKS SWEET DEAL-ET (VG-87)

	70 %Rel T	-2	-1	0	1	2	
STATURE							1.97 T
DAIRY FORM							2.42 O
STRENGTH							1.55 S
BODY DEPTH							1.95 D
RUMP WIDTH							0.74 W
RUMP ANGLE							1.81 H
LEGS SIDE VIEW							0.21 P
LEGS REAR VIEW							2.30 S
FOOT ANGLE							1.62 S
FEET & LEGS SCORE							1.86 H
FORE ATTACHMENT							3.25 S
REAR UDDER HEIGHT							3.69 H
UDDER CLEFT							1.70 S
UDDER DEPTH							2.29 S
FRONT TEAT PLACE							1.97 C
REAR TEAT PLACE							1.66 C
FRONT TEAT LENGTH							0.28 L

aAa: 153 DMS: 135,561 Born: 01/24/2008
Breeder: John & Judy Swenson, Barneveld, WI