



7HO10143 STRAUSSDALE SHOTLE GUAGE-ET

USA64969198 100% RHA-NA TV TL TD



USDA Genomic Evaluation (08/09)					
(Rel 76%)	+1,482Milk	% Test	Lbs.	Net Merit (Rel 73%)	+\$ 639
Protein		- .04	+ 33	Cheese Merit	+\$ 612
Fat		+ .00	+ 54	Fluid Merit	+\$ 679
SCS 2.75 (Rel 71%)	PL +7.0 (Rel 66%)			DPR +0.6 (Rel 64%)	
USDA/HA Genomic Evaluation (08/09)					
	+4.56Type	Rel 71%		GTPITM	+2198
HA Composites	+3.55UDC	+4.16FLC	+3.34BD	+2.83D	
Calving Ease (%DBH)	08/09	Service Sire	9%	69% Rel	
		Daughter	8%	64% Rel	

PICSTON SHOTTLE-ET (GM)

CAROL PRELUDE MTOTO-ET (GM)

CONDON AERO SHARON

COMESTAR OUTSIDE-ET (GM)

MISS H V OUTSIDE GALA (EX-93-2E-EX-MS-DOM)

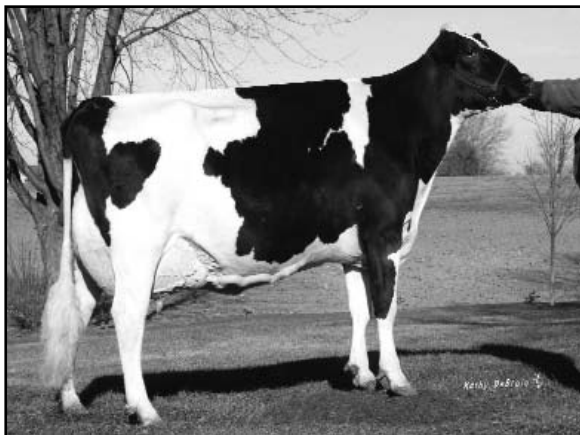
2-1	365d	35,260M	3.4%	1,200F	2.9%	1,031P	3X
3-7	365d	45,720M	3.6%	1,643F	2.8%	1,290P	3X
6-1	365d	36,670M	3.3%	1,228F	2.8%	1,043P	3X

HARMONY VIEW GALAXY (VG-89)

3-2	319d	25,200M	3.4%	846F	2.9%	736P
4-3	361d	35,430M	3.5%	1,235F	2.9%	1,017P

SIRE: Rothrock BS Lucius-ET

- ◆ Shottle x (EX-93) Outside
- ◆ Big time type at +4.56 with over +3.50 UDC & FLC
- ◆ Adds dairy strength and width for great frames



MISS H V OUTSIDE GALA (EX-93-2E-EX-MS-DOM)

	71 %Rel T	-2	-1	0	1	2	
STATURE							3.89 T
DAIRY FORM							2.65 O
STRENGTH							2.82 S
BODY DEPTH							3.10 D
RUMP WIDTH							3.23 W
RUMP ANGLE							0.39 S
LEGS SIDE VIEW							1.20 P
LEGS REAR VIEW							3.94 S
FOOT ANGLE							4.13 S
FEET & LEGS SCORE							4.69 H
FORE ATTACHMENT							4.50 S
REAR UDDER HEIGHT							5.21 H
UDDER CLEFT							2.85 S
UDDER DEPTH							2.81 S
FRONT TEAT PLACE							1.30 C
REAR TEAT PLACE							1.51 C
FRONT TEAT LENGTH							1.37 L

aAa: 132 DMS: 234,345 Born: 01/22/2008
Breeder: Straussdale Holsteins, Lake Mills, WI