



7HO10140 SANDY-VALLEY BRYCE-ET

USA63563701 99% RHA-I TV TL TD



USDA Genomic Evaluation (08/09)					
(Rel 77%)	+1,341Milk	% Test	Lbs.	Net Merit (Rel 73%)	+\$ 575
Protein		+ .01	+ 43	Cheese Merit	+\$ 579
Fat		- .01	+ 46	Fluid Merit	+\$ 565
SCS 2.58 (Rel 71%)	PL +5.7 (Rel 67%)			DPR +0.1 (Rel 65%)	
USDA/HA Genomic Evaluation (08/09)					
	+2.42Type	Rel 70%		GTPI™ +1944	
HA Composites	+2.27UDC	+1.67FLC	+1.67BD	+2.08D	
Calving Ease (%DBH)	08/09	Service Sire	9%	68% Rel	
		Daughter	7%	65% Rel	
Sire Conception Rate	08/09		- 5.2	60% Rel	387 Obs

RAMOS (GM)

REGANCREST BRYNNA-ET (VG-87)

2-4 305d 27,260M 3.7% 1,001F 2.9% 799P
 Full Bro: 7HO9165 Regancrest S Braxton-ET
 Full Sis: Regancrest Barbara-ET (VG-88)
 Full Sis: Regancrest Brasilia-ET (VG-88)

STARTMORE RUDOLPH-ET (VG-85-CAN-GM)

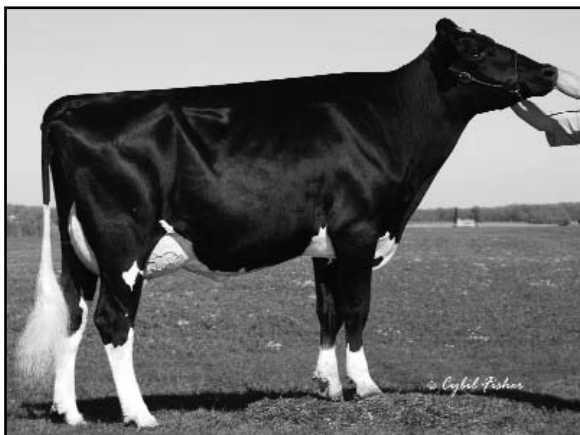
HELDINE 47

PICSTON SHOTTLE-ET (GM)

REGANCREST-PR BARBIE-ET (EX-92-EX-MS-GMD-DOM)

2-6 365d 31,690M 3.9% 1,237F 3.1% 990P
 SIRE: Regancrest Elton Durham-ET (EX-90-GM)
 DAM: Regancrest Juror Brina-ET (EX-92-GMD)
 4-4 365d 40,640M 3.6% 1,478F 2.8% 1,140P

- ◆ Nice GTPI from the famous Barbie family
- ◆ Ramos x Shottle for longevity
- ◆ Balanced Breeding for profit



REGANCREST BRYNNA-ET (VG-87)

70 %Rel T	-2	-1	0	1	2	
STATURE						2.39 T
DAIRY FORM						2.89 O
STRENGTH						0.78 S
BODY DEPTH						1.51 D
RUMP WIDTH						0.54 W
RUMP ANGLE						0.31 S
LEGS SIDE VIEW						0.10 S
LEGS REAR VIEW						1.83 S
FOOT ANGLE						1.50 S
FEET & LEGS SCORE						1.96 H
FORE ATTACHMENT						2.49 S
REAR UDDER HEIGHT						3.62 H
UDDER CLEFT						1.40 S
UDDER DEPTH						1.69 S
FRONT TEAT PLACE						0.83 C
REAR TEAT PLACE						1.04 C
FRONT TEAT LENGTH						0.22 L

aAa: 231 DMS: 345,234 Born: 09/25/2007
 Breeder: D., P., F., & G. Bauer, Scandinavia, WI