



7HO10132 KELLERCREST BRET LANDSCAPE

USA63260515 100% RHA-NA TR TV TL



USDA Genomic Evaluation (08/09)					
(Rel 77%)	+842Milk	% Test	Lbs.	Net Merit (Rel 74%)	+\$ 616
Protein		+ .00	+ 25	Cheese Merit	+\$ 614
Fat		+ .01	+ 32	Fluid Merit	+\$ 618
SCS 2.44 (Rel 72%)	PL +7.0 (Rel 68%)			DPR +1.2 (Rel 67%)	
USDA/HA Genomic Evaluation (08/09)					
	+2.04Type	Rel 70%		GTPITM +1933	
HA Composites	+3.25UDC	+1.78FLC	+0.35BD	+0.34D	
Calving Ease (%DBH)	08/09	Service Sire	7%	69% Rel	
		Daughter	7%	66% Rel	
Sire Conception Rate	08/09		+ 1.6	61% Rel	409 Obs

PECKENSTEIN FORM BRET-ET (EX-94)

SHEN-VAL NV LM FORMATION-ET (VG-85-GM)

KELLERCREST SHOTTLE LONI-ET (VG-86)

2-0 365d 34,150M 3.5% 1,180F 3.0% 1,023P
 Mat Sis: Kellercrest Pippen Lona-ET (VG-88-GMD)
 3-3 365d 41,840M 3.1% 1,302F 2.9% 1,212P
 Mat Sis: Kellercrest Pippen Lorna-ET (VG-87)
 4-11 365d 40,510M 3.6% 1,453F 2.8% 1,136P

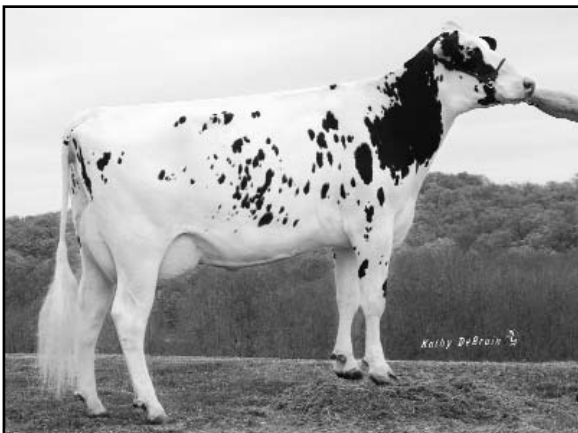
PECKENSTEIN ESQMO CARLEY-ET (EX-90-DOM)

PICSTON SHOTTLE-ET (GM)

KELLERCREST RUDOLPH LONEY (VG-88-GMD-DOM)

2-1 337d 30,100M 3.4% 1,023F 3.0% 892P
 SIRE: Startmore Rudolph-ET (VG-85-CAN-GM)
 DAM: Kellercrest Judge Love (EX-90)
 3-8 365d 34,190M 3.9% 1,342F 3.2% 1,103P

- ◆ Big league productive life at +7.0
- ◆ Sire stack spells customer satisfaction
- ◆ Expect lovely udders as his trademark



KELLERCREST SHOTTLE LONI-ET (VG-86)

