



7HO10102 DUNNS-PRIDE CRIMSON-ET

USA62813821 100% RHA-NA TR TV TL TD



USDA Genomic Evaluation (08/09)					
(Rel 76%)	+2,198Milk	% Test	Lbs.	Net Merit (Rel 72%)	+\$ 587
Protein		+ .00	+ 65	Cheese Merit	+\$ 581
Fat		- .01	+ 76	Fluid Merit	+\$ 589
SCS 2.83 (Rel 71%)	PL +2.8 (Rel 66%)			DPR -1.8 (Rel 65%)	
USDA/HA Genomic Evaluation (08/09)					
	+4.63Type	Rel 70%		GTPITM +2177	
HA Composites	+3.26UDC	+3.18FLC	+3.52BD	+3.18D	
Calving Ease (%DBH)	08/09	Service Sire	10%	68% Rel	
		Daughter	8%	64% Rel	

CAROL PRELUDE MTOTO-ET (GM)

CONDON AERO SHARON

REGANCREST ELTON DURHAM-ET (EX-90-GM)

BELROUX STORM CRISTAL (EX-96-2E-EX-MS-CAN)

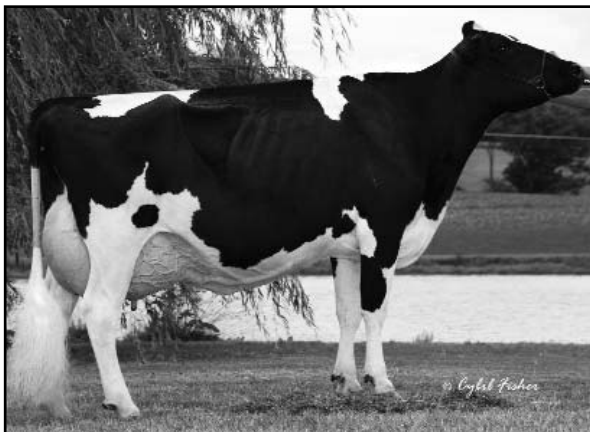
3-0 365d 25,130M 4.0% 1,012F 3.3% 824P
 6-9 365d 33,334M 3.9% 1,303F 3.3% 1,096P
 SIRE: Maughlin Storm-ET (EX-CAN-GM)
 DAM: Belroux Lindy Irene (VG-86-CAN)
 7-7 313d 22,533M 4.1% 926F 3.3% 735P

PICSTON SHOTTLE-ET (GM)

LYLEHAVEN CRISSY-ET (EX-94-2E-EX-MS-DOM)

3-7 365d 36,751M 3.7% 1,368F 3.1% 1,129P
 6-3 305d 36,368M 3.9% 1,410F 2.8% 1,025P
 DTR: Dunns-Pride Gibson Cocoa (EX-90)
 3-3 365d 36,370M 3.9% 1,432F 3.0% 1,094P

- ◆ Show type and production combined in a great young calf
- ◆ One of the highest PTAT calves in the breed
- ◆ Find two better dams than Crissy (EX-94) and Cristal (EX-96)



LYLEHAVEN CRISSY-ET (EX-94-2E-EX-MS-DOM)

70 %Rel T	-2	-1	0	1	2	
STATURE						4.09 T
DAIRY FORM						4.55 O
STRENGTH						2.53 S
BODY DEPTH						3.01 D
RUMP WIDTH						3.91 W
RUMP ANGLE						0.94 H
LEGS SIDE VIEW						0.36 S
LEGS REAR VIEW						3.28 S
FOOT ANGLE						3.82 S
FEET & LEGS SCORE						3.37 H
FORE ATTACHMENT						3.95 S
REAR UDDER HEIGHT						4.75 H
UDDER CLEFT						3.61 S
UDDER DEPTH						2.47 S
FRONT TEAT PLACE						1.27 C
REAR TEAT PLACE						1.88 C
FRONT TEAT LENGTH						1.17 L

aAa: 132 DMS: 123,126 Born: 11/16/2007
 Breeder: James A. Dunn, New Ringgold, PA