



**7HO10101 DUNNS-PRIDE COPENHAGEN-ET**

USA62813823 100% RHA-NA TR TV TL TD



USDA Genomic Evaluation (08/09)					
(Rel 77%)	+1,449Milk	% Test	Lbs.	Net Merit (Rel 73%)	+\$ 522
Protein		+ .00	+ 44	Cheese Merit	+\$ 521
Fat		+ .03	+ 61	Fluid Merit	+\$ 518
SCS 2.88 (Rel 72%)	PL +3.5 (Rel 67%)			DPR -1.8 (Rel 66%)	
USDA/HA Genomic Evaluation (08/09)					
	+4.14Type	Rel 70%		GTPI™	+2038
HA Composites	+3.96UDC	+2.81FLC	+2.72BD	+2.54D	
Calving Ease (%DBH)	08/09	Service Sire	9%	69% Rel	
		Daughter	7%	65% Rel	

**BRAEDALE GOLDWYN (GM)**

**SHOREMAR JAMES (GP-81-CAN-GM)**

**LYLEHAVEN CRISSY-ET (EX-94-2E-EX-MS-DOM)**

3-7 365d 36,751M 3.7% 1,368F 3.1% 1,129P  
 6-3 305d 36,368M 3.9% 1,410F 2.8% 1,025P  
 DTR: Dunns-Pride Gibson Cocoa (EX-90)  
 3-3 365d 36,370M 3.9% 1,432F 3.0% 1,094P

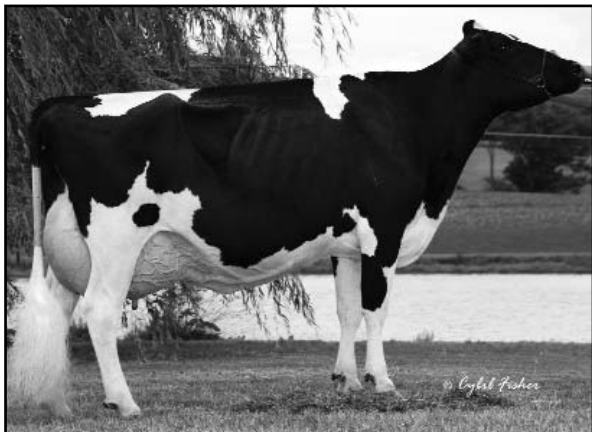
**BRAEDALE BALER TWINE-ETS (VG-86-CAN)**

**REGANCREST ELTON DURHAM-ET (EX-90-GM)**

**BELROUX STORM CRISTAL (EX-96-2E-EX-MS-CAN)**

3-0 365d 25,130M 4.0% 1,012F 3.3% 824P  
 6-9 365d 33,334M 3.9% 1,303F 3.3% 1,096P  
 SIRE: Maughlin Storm-ET (EX-CAN-GM)  
 DAM: Belroux Lindy Irene (VG-86-CAN)  
 7-7 313d 22,533M 4.1% 926F 3.3% 735P

- ◆ Showcase Selections sire and elite GTPI
- ◆ Blue-ribbon type from this elite Goldwyn son from Crissy
- ◆ Dominating show style with Excellent (94-2E) Crissy and Excellent (96-2E) Cristal



**LYLEHAVEN CRISSY-ET (EX-94-2E-EX-MS-DOM)**

	70 %Rel T	-2	-1	0	1	2	
STATURE							3.84 T
DAIRY FORM							3.79 O
STRENGTH							1.21 S
BODY DEPTH							1.71 D
RUMP WIDTH							2.44 W
RUMP ANGLE							0.88 H
LEGS SIDE VIEW							0.33 S
LEGS REAR VIEW							3.19 S
FOOT ANGLE							2.85 S
FEET & LEGS SCORE							3.12 H
FORE ATTACHMENT							4.95 S
REAR UDDER HEIGHT							5.66 H
UDDER CLEFT							3.27 S
UDDER DEPTH							3.46 S
FRONT TEAT PLACE							0.62 C
REAR TEAT PLACE							0.62 C
FRONT TEAT LENGTH							0.25 L

aAa: 234 DMS: 234,345 Born: 12/14/2007  
 Breeder: James A. Dunn, New Ringgold, PA