



7HO10096 WELCOME STEPHEN-ET

USA64519050 100% RHA-NA TR TV TL TD



USDA Genomic Evaluation (08/09)					
(Rel 75%)	+2,135Milk	% Test	Lbs.	Net Merit (Rel 71%)	+\$ 578
Protein		+ .03	+ 72	Cheese Merit	+\$ 593
Fat		- .01	+ 76	Fluid Merit	+\$ 549
SCS 2.89 (Rel 70%)	PL +2.3 (Rel 63%)			DPR -1.2 (Rel 61%)	
USDA/HA Genomic Evaluation (08/09)					
	+3.43Type	Rel 69%		GTPI™ +2098	
HA Composites	+3.07UDC	+2.71FLC	+2.83BD	+2.69D	
Calving Ease (%DBH) 08/09	Service Sire	9%	68% Rel		
	Daughter	9%	63% Rel		

SANDY-VALLEY BOLTON-ET (EX-90)

LEXVOLD LUKE HERSHEL-ET (GM)

FLY-HIGHER OMAN STUTTER-ET (VG-88-EX-MS-DOM)

2-2 365d 28,760M 4.1% 1,171F 3.2% 918P 3X
 Full Sis.: Fly-Higher Oman Stacy-ET (VG-86)
 2-2 365d 26,690M 4.3% 1,150F 3.2% 848P 3X
 Mat.Sis.: Fly-Higher Reggie Sarah-ET (EX-90-EX-MS)
 2-0 365d 34,490M 4.0% 1,377F 2.9% 1,008P 3X

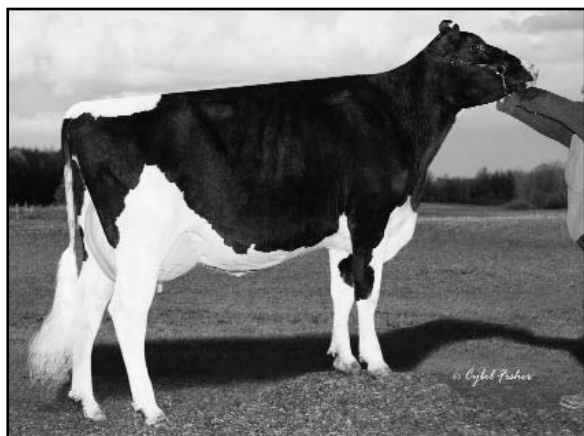
SANDY-VALLEY BLESSING-ET (VG-88-EX-MS-GMD-DOM)

O-BEE MANFRED JUSTICE-ET (EX-94-GM)

ALLIMAR DURHAM STETSON (EX-92-EX-MS-DOM)

2-1 365d 31,850M 4.9% 1,547F 3.0% 970P 3X
 6-3 365d 45,150M 3.7% 1,682F 3.0% 1,362P
 SIRE: Regancrest Elton Durham-ET (EX-90-GM)
 DAM: Allimar Prescott Starsky (EX-92-GMD-DOM)
 3-2 322d 34,930M 4.1% 1,416F 2.9% 1,015P

- ◆ Outstanding sire stack: Bolton x (VG-88) O MAN x (EX-92) DURHAM x (EX-92) PRESCOTT
- ◆ High PTA Fat backed by three generations with over 4.0% test
- ◆ One of Select's most complete Bolton sons



FLY-HIGHER OMAN STUTTER-ET (VG-88-EX-MS-DOM)

69 %Rel T	-2	-1	0	1	2	
STATURE						3.64 T
DAIRY FORM						3.03 O
STRENGTH						1.87 S
BODY DEPTH						2.30 D
RUMP WIDTH						1.96 W
RUMP ANGLE						0.10 H
LEGS SIDE VIEW						1.06 S
LEGS REAR VIEW						3.01 S
FOOT ANGLE						3.20 S
FEET & LEGS SCORE						2.92 H
FORE ATTACHMENT						3.91 S
REAR UDDER HEIGHT						3.94 H
UDDER CLEFT						1.44 S
UDDER DEPTH						3.08 S
FRONT TEAT PLACE						1.38 C
REAR TEAT PLACE						1.52 C
FRONT TEAT LENGTH						0.14 S

aAa: 432 DMS: 246,456 Born: 11/25/2007
 Breeder: Willard H. Peck, Schuylerville, NY