



7HO10084 FLY-HIGHER MUNCHKIN-ET

USA64167442 100% RHA-NA TR TV TL TD



USDA Genomic Evaluation (08/09)					
(Rel 74%)	+2,131Milk	% Test	Lbs.	Net Merit (Rel 70%)	+\$ 674
Protein		+ .00	+ 64	Cheese Merit	+\$ 669
Fat		+ .08	+ 100	Fluid Merit	+\$ 674
SCS 2.75 (Rel 69%)	PL +3.4 (Rel 62%)			DPR -1.6 (Rel 60%)	
USDA/HA Genomic Evaluation (08/09)					
	+2.45Type	Rel 69%		GTPITM +2042	
HA Composites	+2.01UDC	+1.79FLC	+0.60BD	+1.54D	
Calving Ease (%DBH)	08/09	Service Sire	8%	69% Rel	2 Obs
		Daughter	8%	65% Rel	
Sire Conception Rate	08/09		- 0.8	69% Rel	570 Obs

SANDY-VALLEY BOLTON-ET (EX-90)

LEXVOLD LUKE HERSHEL-ET (GM)

SANDY-VALLEY BLESSING-ET (VG-88-EX-MS-GMD-DOM)

HENDEL SHOTTLE MICA 2144-ET (VG-88)

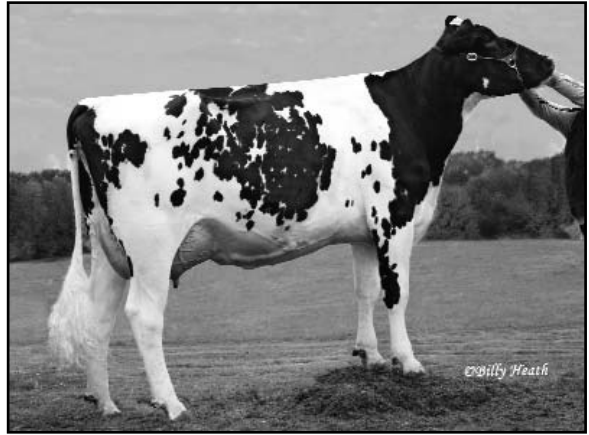
2-6 305d 30,676M 4.0% 1,218F 3.0% 937P
 Full Sis.: Hendel Shottle Miami-ET (VG-86)
 Mat. Sis.: Hendel Goldwyn Mist 2219-ET (VG-86)

PICSTON SHOTTLE-ET (GM)

HENDEL DURHAM MITZI 1390 (EX-90-EX-MS-GMD-DOM)

1-10 298d 26,560M 3.4% 896P 3.0% 798P 3X
 2-10 365d 42,810M 3.6% 1,522F 3.0% 1,299F 3X
 SIRE: Regancrest Elton Durham-ET (EX-90-GM)

- ◆ Exciting offering from the DURHAM Mitzi family
- ◆ Proven performance for the free stall world
- ◆ Bolton son from one of Shottle's finest daughters



HENDEL SHOTTLE MICA 2144-ET (VG-88)

	69 %Rel T	-2	-1	0	1	2	
STATURE							0.95 T
DAIRY FORM							2.67 O
STRENGTH							0.01 F
BODY DEPTH							0.24 D
RUMP WIDTH							0.90 W
RUMP ANGLE							0.87 S
LEGS SIDE VIEW							1.05 S
LEGS REAR VIEW							2.69 S
FOOT ANGLE							2.62 S
FEET & LEGS SCORE							1.48 H
FORE ATTACHMENT							2.61 S
REAR UDDER HEIGHT							3.48 H
UDDER CLEFT							0.71 S
UDDER DEPTH							1.17 S
FRONT TEAT PLACE							0.66 C
REAR TEAT PLACE							1.15 C
FRONT TEAT LENGTH							0.00 L

aAa: 234 DMS: 234 Born: 06/27/2007
 Breeder: Fly-Higher Holsteins LLC., Valley Falls, NY