



7HO10075 AMMON FARMS DODGE-ET

USA64665584 99% RHA-I TV

USDA Genomic Evaluation (08/09)					
(Rel 73%)	+1,357Milk	% Test	Lbs.	Net Merit (Rel 70%)	+\$ 688
Protein		+ .10	+ 67	Cheese Merit	+\$ 742
Fat		+ .04	+ 61	Fluid Merit	+\$ 596
SCS 2.87 (Rel 69%)	PL +4.7 (Rel 64%)			DPR +0.8 (Rel 62%)	
USDA/HA Genomic Evaluation (08/09)					
	+2.14Type	Rel 70%		GTPI™ +2067	
HA Composites	+2.62UDC	+0.81FLC	+1.04BD	+1.11D	
Calving Ease (%DBH) 08/09	Service Sire	7%	66% Rel		
	Daughter	5%	62% Rel		

RAMOS (GM)

STARTMORE RUDOLPH-ET (VG-85-CAN-GM)

HELDINE 47

AMMON FARMS FINLEY DEEANN (VG-86)

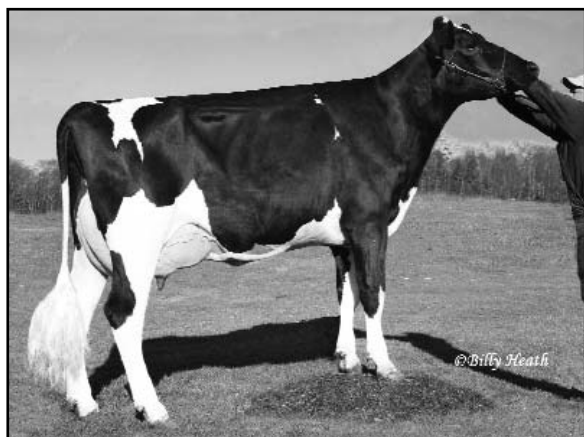
2-3 365d 36,170M 2.9% 1,035F 3.2% 1,147P
 3-5 301d 32,400M 3.0% 979F 3.2% 1,030P

OPSALE FINLEY-ET (GM)

AMMON FARMS ORION DEEDEE (EX-91-2E-EX-MS)

2-2 365d 30,310M 3.8% 1,150F 3.3% 1,004P
 3-6 365d 44,000M 3.8% 1,675F 3.2% 1,420P
 5-2 365d 46,170M 3.4% 1,583F 3.1% 1,444P
 SIRE: Andacres Hunter Orion (VG-85)
 DAM: Ammon Farms Lantz Deena-ET (VG-87-EX-MS)
 4-3 365d 26,530M 3.8% 1,006F 3.2% 862P

- ◆ Seven generations Very Good and Excellent
- ◆ Top-end genetics for breeder satisfaction
- ◆ A great bull to use on Shottle blood



AMMON FARMS FINLEY DEEANN (VG-86)

	70 %Rel T	-2	-1	0	1	2	
STATURE							1.56 T
DAIRY FORM							1.24 O
STRENGTH							0.26 S
BODY DEPTH							0.31 D
RUMP WIDTH							1.52 W
RUMP ANGLE							0.29 H
LEGS SIDE VIEW							0.44 P
LEGS REAR VIEW							1.72 S
FOOT ANGLE							1.13 S
FEET & LEGS SCORE							0.38 H
FORE ATTACHMENT							3.12 S
REAR UDDER HEIGHT							2.97 H
UDDER CLEFT							1.20 S
UDDER DEPTH							3.06 S
FRONT TEAT PLACE							0.89 C
REAR TEAT PLACE							1.57 C
FRONT TEAT LENGTH							0.27 S

DMS: 561,135 Born: 11/29/2007
 Breeder: William R. & Michael W. Ammon, Lewistown, PA