



7HO10021 LARCREST COSMOS-ET

USA53452462 99% RHA-I TR TV TL TD



USDA Genomic Evaluation (08/09)					
(Rel 74%)	+986Milk	% Test	Lbs.	Net Merit (Rel 70%)	+\$ 693
Protein		+ .06	+ 46	Cheese Merit	+\$ 726
Fat		+ .21	+ 91	Fluid Merit	+\$ 635
SCS 2.79 (Rel 69%)	PL +5.2 (Rel 64%)			DPR +0.5 (Rel 63%)	
USDA/HA Genomic Evaluation (08/09)					
	+2.64Type	Rel 70%		GTPI™ +2077	
HA Composites	+2.65UDC	+1.12FLC	+1.39BD	+1.70D	
Calving Ease (%DBH)	08/09	Service Sire	7%	66% Rel	
		Daughter	7%	63% Rel	
Sire Conception Rate	08/09		- 0.4	87% Rel	1,697 Obs

RAMOS (GM)

STARTMORE RUDOLPH-ET (VG-85-CAN-GM)

HELDINE 47

LARCREST COSMOPOLITAN (VG-87-DOM)

2-4 365d 30,930M 4.1% 1,261F 3.4% 1,061P

PICSTON SHOTTLE-ET (GM)

LARCREST OSIDE CHAMPAGNE-TW (VG-87)

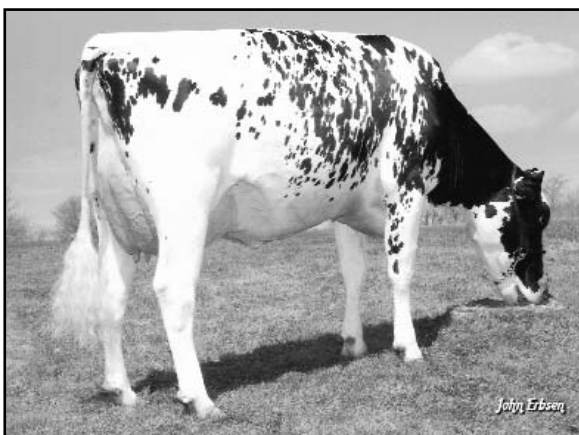
2-3 365d 29,105M 4.5% 1,322F 3.3% 967P

SIRE: Comestar Outside-ET (GM-CAN)

DAM: Larcrest Juror Chanel (EX-93-3E)

over 245,420 lbs. Milk Lifetime

- ◆ Ramos son x VG-87 Shottle for time-tested greatness
- ◆ Special cow family with components and high type
- ◆ Compliments and an outcross to all DURHAM and BW MARSHALL bloodlines!



LARCREST COSMOPOLITAN (VG-87-DOM)

08/2009 USDA/HA Genomic PA STA'S					
70 %Rel T	-2	-1	0	1	2
STATURE					1.65 T
DAIRY FORM					1.29 O
STRENGTH					1.13 S
BODY DEPTH					1.13 D
RUMP WIDTH					1.10 W
RUMP ANGLE					0.26 H
LEGS SIDE VIEW					0.98 P
LEGS REAR VIEW					1.39 S
FOOT ANGLE					1.13 S
FEET & LEGS SCORE					1.03 H
FORE ATTACHMENT					3.39 S
REAR UDDER HEIGHT					3.02 H
UDDER CLEFT					1.52 S
UDDER DEPTH					2.76 S
FRONT TEAT PLACE					1.92 C
REAR TEAT PLACE					1.75 C
FRONT TEAT LENGTH					0.14 S

aAa: 426 DMS: 246,234 Born: 08/13/2007
Breeder: Jon E. Larson, Albert Lea, MN