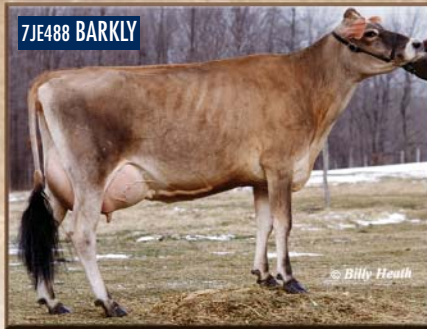


SOMATIC CELL SCORE & Mastitis Resistance



Above: Calori-D Bright Maria (VG-88-EX-MS), Calori-D Holsteins, Denair, CA
Center: Ayers Bret No. 5139-Grade, Ayers Farm, Perrysville, OH
Below: Willow-Grove Barkly Ann-Grade, Willow-Grove Farm, Salisbury, PA



Telephone: (614) 873-4683
Fax: (614) 873-5751
www.selectsires.com

SOMATIC CELL SCORE & Mastitis Resistance

While management and preventive care are the best ways to control mastitis, using PTAs for Somatic Cell Score (SCS) can help slow the increase in mastitis. The average SCS PTA for Holsteins is approximately 3.1, with lower scores representing above-average improvement. Consider SCS in matings, along with production and type traits, to help improve mastitis resistance and meet your overall herd-improvement goals.

	PTA	SCS	REL	MILK	REL	TPI TM
• 7H05682 SAUNDERS TM TV ♦	+2.71	76%	+ 850	89%	+1484	
• 9H02344 COOPER TM TV ^{HB} ♦	+2.73	89%	+ 879	96%	+1355	
• 9H02575 BRET TM TV ^{HB}	+2.76	72%	+1,560	87%	+1645	
• 7H06055 BRIGHT TM TV ♦	+2.80	77%	+1,549	90%	+1567	
• 7H06326 DIFFERENCE TM TV	+2.83	85%	+ 926	94%	+1483	
• 7H06417 O MAN TM TV ♦	+2.85	84%	+1,663	94%	+1943	
• 7H05157 DURHAM TM CV ^{HB}	+2.87	99%	+ 765	99%M	+1615	
• 7H06194 MILLENNIUM TM TV ♦	+2.87	89%	+1,411	96%	+1515	
• 7H05742 HILLCREST TM TV ^{HB}	+2.88	80%	+1,676	92%M	+1469	
• 7H05891 DILLON TM TV ♦	+2.88	81%	+1,919	92%	+1509	
• 7H06151 GAGE TM TV	+2.88	71%	+1,508	86%	+1411	
• 7H06313 CROCKETT TM CV	+2.89	85%	+ 436	95%M	+1549	
• 7H05710 DANE TM TV ^{TD} ^{HB} ♦	+2.90	80%	+1,906	93%M	+1721	
• 7H05752 SUPREME TM TV	+2.90	73%	+1,653	88%	+1450	
<hr/>						
• 7JE488 BARKLY ♦	+3.03	70%	+1,577	87%	+208	
• 9JE195 COMET	+3.06	74%	+ 746	88%M	+180	
• 7JE535 JACE	+3.12	79%	+1,310	92%	+293	
• 7JE510 GOLDEN	+3.15	86%	+ 157	95%	+182	
• 9JE172 KLASSIC	+3.15	75%	+1,601	90%	+262	
<hr/>						
• 7BS736 JAMARR	+3.01	60%	+1,960	80%	+211	
• 7BS750 DYNASTY	+3.03	55%	+2,237	78%	+304	
<hr/>						
• 7GU343 GLACIER	+3.17	76%	+ 681	86%M	+187	
• 7GU379 BANGER	+3.19	55%	+1,892	75%	+259	
<hr/>						
• 7AY70 SATELLITE	+2.86	54%	+ 956	75%	+178	

♦Eligible for semen export to Canada. ^{HB}HerdLife Builder™ ♦SUPERIOR SETTLER™ 05/04 USDA & breed cow PTAs: MILK/M/USX 05/03. TMHerdLife Builder, SUPERIOR SETTLER and Reproductive Solutions are trademarks of Select Sires Inc. TMTPI is a trademark of the American Jersey Cattle Association.



Telephone: (614) 873-4683
 Fax: (614) 873-5751
 www.selectsires.com

SS938-0504 Product of the USA.