

# New Graduate

August 2009



## Comments

The August graduation class is both large in number and large in quality, with a dozen new graduates. This may very well be the first time half of our new grads will likely make their debut onto Holstein's Official Top-100 TPI™ list with their high reliabilities.

The 12 new bulls are sired by seven different sires, with O MAN leading the way with five new sons added to the lineup. Also added were two Red Carrier September Storm sons, and one each sired by Boliver, Lancelot, Ito, Titanic and Finley.

As usual, we added bulls to the top of many categories.

- Elite TPI sires: three over +1900, two are over +2000
- Elite NM\$ sires: five over +\$500, two are over +\$600
- Big-time Milk: two over +2,000 Milk
- High Type: 10 over +2.00 with four over +3.00
- High UDC: eight bulls over +2.00 and two are over +3.00
- High FLC: five bulls over +2.00 and two are over +3.00
- High-components sires: six bulls plus on both Fat percent and Protein percent
- CE sires: eight new bulls from 5% to 7%, four are at 5%
- Red and White: two high-type Red Carrier bulls from Scientific Debutante Rae-ET (EX-92-EX-MS-GMD-DOM), the World Dairy Expo reserve grand champion cow

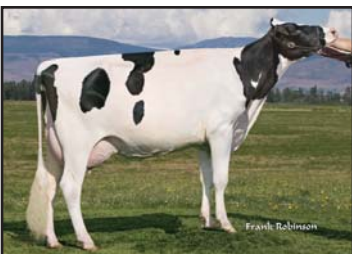


Ammerman Bronco 898-Grade  
Jeff Ammerman, Athens, PA

7H08747 End-Road O-Man **BRONCO-ET** (EX-92)

7H06417 O MAN x (VG-88-GMD-DOM) 7H05375 BW MARSHALL with 34,000 pounds of milk x (EX-91-2E-EX-MS) Ricecrest Marty-ET with 40,000 pounds of milk x (VG-85-DOM) 7H03707 MATHIE

- Top-5 TPI sire on Holstein's Official Top-100 TPI List at +2072 GTPI
- Elite NM\$: +\$635
- Fourth dam is a MATHIE daughter and is the dam of End-Road PVF Boliver-ET
- +2,020 Milk with good components and +0.2 DPR
- Elite fitness sire: +3.3 PL and 2.88 SCS
- Great conformation sire: +2.58 Type, +2.73 UDC, +1.93 FLC and +2.70 strength
- Sensational calving-ease sire at 5% CE and 5% DCE
- Mating sire for sons
- Awesome-looking bull at Excellent (92) points



Deruyler Niagra 1297-Grade  
Deruyler Bros., Outlook, WA

7H08856 Ri-Val-Re-2338 **NIAGRA-ET**

End-Road PVF Boliver-ET x (EX-91-2E-DOM) Jesther-ET with 42,000 pounds of milk x (VG-85-GMD-DOM) 7H04638 TERRY with 34,000 pounds of milk x (EX-90-EX-MS-DOM) 7H02236 ELTON with 37,000 pounds of milk

- Mega-milk sire with outstanding type: +2,399 Milk and +3.00 Type
- Tied with 7H08081 PLANET as No. 1 sire at Select for Protein yield (+77), No. 3 for Milk yield
- Elite TPI sire at +2041 GTPI
- Select's first Boliver son to graduate
- Outcross pedigree, dam still looks fantastic and has a great udder and ideal dairy strength

- Outstanding udders: over +3.00 on rear udder height and width and center support
- Calving-ease sire at 7% CE and 5% DCE
- Will get cows pregnant: +3.6 SCR with 2,098 observations
- Mating sire for sons



### 7H08744 Gross-Farm O-Man **SECRET-ET**

7H06417 O MAN x (VG-85) 2-year-old 7H05157 DURHAM with 36,000 pounds of milk x Maizefield Bellwood-ET with 42,000 pounds of milk

- Elite Net Merit and Cheese Merit sire: +609 NM\$ and +648 CM\$
- High components: +.14%F and +.07%P
- Outstanding fitness traits: 2.74 SCS, +4.2 PL and +0.4 DPR
- Easy-calving sire at 5% CE and 5% DCE
- Moderate-statured cows (+1.00 stature) with strength (+1.85)



Hilltop-MJD Apollo Arlana  
Hilltop Holsteins, Oakdale, CA

### 7H09016 Canyon-Breeze Ito **APOLLO-ET (EX-90)**

Barbee-M Juror Ito-ET x (EX-94-3E-EX-MS-DOM) 7H03948 EMORY with 40,000 pounds of milk x (EX-93-EX-MS-GMD-DOM) To-Mar Wister-ET with 38,000 pounds of milk x (EX-91-2E-GMD-DOM) 7H0980 MARK with 41,000 pounds of milk

- Extraordinary cow family
- Second-highest Ito son in Active A.I. (7H07853 MICHAEL is No. 1)
- Great for component pricing markets – plus on both Fat Percent and Protein Percent
- Big-time fitness traits: +3.1 PL, +1.1 DPR and 2.92 SCS
- Heifer A.I. sire at 7% CE and 5% DCE
- Outstanding conformation : +2.47 Type, +2.38 UDC and +2.17 strength



J-Kilo Allstar 688-Grade  
M-Brook Farms, Paris, OH

### 7H08778 Morningview **ALLSTAR-ET**

Hartline Titanic-ET x (VG-89-EX-MS-GMD-DOM) Carol Prelude Mtoto-ET with 40,000 pounds of milk x (VG-85-GMD-DOM) 250 Gibbon with 25,000 pounds of milk x (EX-93-EX-MS-GMD-DOM) Highlight Converse-ET with 38,000 pounds of milk

- Different sire stack and milky cow family
- Solid milk sire (+1,563 Milk) along with a low SCS (2.57)
- Great linear traits and over +2.00 on all four composites
- This almost +3.00 type sire should cross well on O MAN and BW MARSHALL bloodlines
- Heifer A.I. sire at 7% CE; good milk and great type = customer-satisfaction sire
- Top-100 TPI Holstein at +1809 GTPI



Overstreet General 2103-Grade  
Overstreet Dairy, Chillicothe, TX

### 7H08777 De-Su Finley **GENERAL-ET (EX-93)**

Opsal Finley-ET x (VG-88-GMD-DOM) 7H05375 BW MARSHALL with 42,000 pounds of milk x (EX-90-2E-EX-MS-GMD-DOM) 9H01729 PATRON with 44,000 pounds of milk x (VG-87-EX-MS-GMD-DOM) Rothrock Tradition Leadman

- Huge UDC sire (+3.43) and over +3.00 Type
- No. 2 UDC bull at Select
- Exceptional linear for all udder and feet and legs traits
- Plus Protein Percent and more than +1,000 Milk
- Low SCS (2.69) and healthy udders
- Fantastic individual at Excellent (93) points





Herring Courage 6063-Grade  
Sweet Grass Dairy, Cushing, TX

7H08661 Larcrest **COURAGE**-ET (EX-92)

7H06417 O MAN x (EX-90-EX-MS-GMD-DOM) Wa-Del Convincer-ET with 41,000 pounds of milk x (EX-93-3E-EX-MS-GMD-DOM) Ked Juror-ET with 48,000 pounds of milk

- Extreme component sire: +.20%F and +.04%P
- One of O MAN's best UDC sons at +1.97 with super rear udders
- Calving-ease sire at 6% CE and 5% DCE
- Fancy individual scored Excellent (92)
- Top-100 TPI Holstein at +1868 GTPI



Gibbs Lariat 1458-Grade  
Michael Gibbs, Waterville, IA

7H08662 Pine-Shelter O **LARIAT**-ET (EX-90)

7H06417 O MAN x (VG-88-GMD-DOM) Carol Prelude Mtoto-ET with 35,000 pounds of milk x (EX-95-3E-EX-MS-DOM) Plushanski Fargo-ET with 40,000 milk x (EX-91-4E-EX-MS-DOM) 7H0902 LUCKY ROYAL

- Phenomenal cow family with the Excellent (95-3E-EX-MS-DOM) Lucina Fargo grandam
- THE elite-Type O MAN son at +2.37 Type, +2.32 UDC and +2.60 FLC
- Cheese market sire at +.18%F and +.05%P
- High fitness traits: +3.7 PL and +0.9 DPR
- Calving Ease specialist at 5% CE and 6% DCE
- Very well sampled with 167 daughters in 101 herds and 94% Reliability
- Top-100 TPI Holstein at +1819 GTPI



Loump Solution Joy  
Enos E. Loump, Bernville, PA

7H08704 Honeycrest **SOLUTION**-ET

Lancelot x (EX-92-2E-EX-MS-GMD-DOM) Juniper Secret Ohio with 40,000 pounds of milk x (VG-85-GMD-DOM) Zee-Cal Commotion with 28,000 pounds of milk

- A REAL outcross sire stack
- SOLUTION has four sisters, all Very Good and Excellent and all over 29,000 pounds of milk
- Almost +1,600 Milk with +.05%P
- Outcross with Type: +2.25 Type, +2.26 FLC and +1.69 UDC
- The right linear for the right time – moderate stature and steep foot angle
- Great match for most Select Sires bloodlines
- Top-100 TPI at +1803 GTPI



Scheer Officer Snowball-Grade  
Eugene Scheer, New Heaven, MO

7H08715 Windsor-Manor Z **OFFICER**-ET (EX-92)

7H06417 O MAN x Windsor-Manor Rud Zip (EX-95-3E-EX-MS-GMD-DOM) with 39,000 pounds of milk x (EX-90-3E-EX-MS-DOM) 7H04164 JOLT with 34,000 pounds of milk

- Dam is the world-renowned Windsor-Manor Rud Zip
- +.17%F and +.10%P for the cheese markets
- Super Sampler™ graduate with 163 daughters in 87 herds
- Breed leader for fitness traits with +2.4 DPR and +3.8 PL
- Solid type at +1.82 Type, +1.57 UDC and +1.70 FLC
- Trouble-free cows built for profitability
- Top-100 TPI sire at +1846 GTPI
- Fancy bull scored Excellent (92)





Chairein Duce Snowball-Red (VG-85)  
Tony DeMello, Jr., Turlock, CA

### 7H08738 Scientific **SS DEUCE-ET \*RC (EX-90)**

Pursuit September Storm-ET x (EX-92-EX-MS-GMD-DOM) All-American 7H05157 DURHAM with 32,000 pounds of milk x (EX-90-DOM) Meadolake Jubilant-ET with 38,000 pounds of milk

- Dam, Debutante Rae, was 2005 reserve grand champion cow at World Dairy Expo
- Traces back to the Excellent (97) Roxy family
- Popular Super Sampler now with 492 daughters in 316 herds and 97% Reliability
- Type for the show-ring: +3.00 PTAT with 145 classified daughters and 93% Reliability
- Sensational linear all to the right: +2.48 UDC, +3.37 FLC, +2.46 BD and +2.38 D
- One of the breed's best Red Carrier sires
- Gets cows pregnant +3.7 SCR with 6,437 observations



Wenallt Dusk Chrissy (VG-85-VG-MS)  
Wenallt Holsteins, Crysler, ON, Canada

### 7H08743 Scientific **SS DUSK-ET \*RC (EX-94)**

Pursuit September Storm-ET x (EX-92-EX-MS-GMD-DOM) All-American 7H05157 DURHAM with 32,000 pounds of milk x (EX-90-DOM) Meadolake Jubilant-ET with 38,000 pounds of milk

- Dam, Debutante Rae, was 2005 reserve grand champion cow at World Dairy Expo
- Traces back to the Excellent (97) Roxy family
- Breed-leading Red Carrier at +1778 GTPI-M, mating sire to follow 7H07872 ADVENT-RED
- Exceptional individual scored Excellent (94) on his first score
- Show-ring sire that adds more strength than his sire
- Triple +3.00 sire: +3.80 Type, +3.18 UDC and +3.33 FLC with 136 classified daughters
- Smashing good linear traits as is evident with his +3.18 UDC and +3.33 FLC
- Outstanding Program for Genetic Advancement™ (PGAC™) sampling with 163 daughters in 130 herds
- No. 38 LPI sire in Canada



WF Moment Bunch  
Waverly Farms, Clear Brook, VA

### 7JE816 WF Centurn Seize the **MOMENT-ET**

7JE329 CENTURION x Hermitage Counciller Sheba (E-96%) x (VG-86-CAN) J.S. Quicksilver Royal

MOMENT joins the Select Sires lineup as a balanced option with a pleasing sire stack. He is unique in that he was the first Showcase Selections bull sampled in the Jersey breed and he returns to the active lineup. MOMENT delivers on the style and balance you would expect being a 7JE329 CENTURION son out of Hermitage Counciller Sheba (E-96%) that has graced the colored shavings winning many accolades. Sheba also performed well in production making three records over 20,000 pounds of milk and twice over 1,000 pounds of fat! MOMENT supplies fancy, functional udders that are carried high above the hock with fantastic attachments. He also contributes that wonderful balance of statue and strength with a dairy quality that is expected. Use MOMENT with ease on JACE, GERONIMO, LOUIE and Abe daughters.

- Improves udder attachments and depth!
- Plus component percents
- Type and components all from show-winning dam





Sun Made Tag B Supreme Boo  
"VG87 E90MS"  
Ken Main and Peter Vail, Copake, NY

## 7BS796 Old Mill WDE **SUPREME ET** \*TM

Bridge View Prime Time x Old Mill E Snickerdoodle OCS "3E94 3E97MS" x "2E90 2E90MS" R Hart Simon Ensign ET

SUPREME was Select's very first Brown Swiss Showcase Selections bull and he is definitely living up to the high expectations. Now with his first official sire summary and official graduate status, he still bears the Showcase Selections logo louder and prouder than ever. As the world has been waiting for the sons of the famous Snickerdoodle, SUPREME's name consistently has been the one brought up with a positive excitement in all Brown Swiss circles.

Starting last summer and fall, the SUPREME heifers were noticed for their dairy quality, length and style. They gathered numerous awards at shows and sold well in public sales. At World Dairy Expo he had two fall calves among the top-10, one a ringside favorite in the fifth spot. A fall calf that was a feature of the 2008 Ohio National Sale went on to win her class at the Royal Winter Fair in Canada and was later named the All-Canadian fall calf. The buzz continued to improve when the SUPREMEs started calving. The first call Brian Garrison received, the breeder was excited with her "knock-out udder". She went on to be his first classified daughter at Very Good "87" with an Excellent mammary. Breeders are pleased with the dairyness, udders and how well they are milking. And even better, you will hear them bragging on their udder quality and fast milk-out. He is a Showcase Selections bull with daughters that everyone will like to milk 365 days a year and not just show day.

Unfortunately, SUPREME died last summer. There is a limited supply of semen available for breeders to take advantage of arguably Snickerdoodle's best son.



Source: 08/09 USDA Genomic Evaluation, USDA/HA Genomic Type Evaluation, USDA/AJCA Genomic Type Evaluation and USDA/BSCBA Genomic Type Evaluation, IB-M/USA Production Evaluation.

08/09 Rel: BRONCO NM 86%, USDA 91%, DPR 72%, PL 75%, SCS 82%, USDA/HA Type 85%, CE 82%, DCE 74%; NIAGRA USDA 87%, USDA/HA Type 79%, CE 87%, DCE 71%, SCR 89%; SECRET NM 82%, USDA 90%, SCS 81%, PL 73%, DPR 70%, CE 81%, DCE 73%, USDA/HA Type 83%; APOLLO USDA 91%, PL 79%, DPR 75%, SCS 85%, CE 78%, DCE 77%, USDA/HA Type 86%; ALLSTAR USDA 91%, SCS 82%, USDA/HA Type 86%, CE 84%; GENERAL USDA/HA Type 87%, USDA 92%, SCS 85%; COURAGE USDA 92%, USDA/HA Type 85%, CE 86%, DCE 76%; LARIAT USDA/HA Type 89%, USDA 94%, PL 76%, DPR 76%, CE 86%, DCE 77%; SOLUTION USDA 89%, USDA/HA Type 87%; OFFICER USDA 94%, DPR 78%, PL 79%, USDA/HA Type 88%; SS DEUCE IB-M/USA 97%, USDA/HA Type 93%, SCR 96%; DUSK IB-M/USA 84%, USDA/HA Type 71%

\*TMHealthMark, HerdLife Builder, genderSELECTed, FeedPRO, Showcase Selections, Super Sampler, Program for Genetic Advancement Canada, PGAC and Superior Settler are trademarks of Select Sires Inc.; TPI is a trademark of Holstein Association USA.