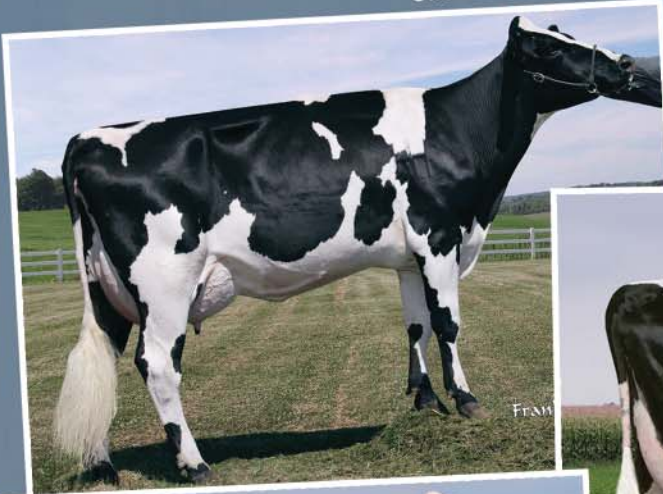


CROSSBREEDING

DIRECTORY

AUGUST 2009

Swedish Red x Holstein



Montbeliarde x Swedish Red x Holstein



Montbeliarde x Holstein



www.selectsires.com



249SR1804 **O BROLIN**



O BROLIN

aAa: 162543 Kappa Casein AB
 3,496 daughters 1,677 herds 77% Rel.
 +1,104M +.10% +62F +.13% +58P
 +6.0 PL 2.88 SCS +635 NM\$

113 Daughter Fertility
 110 Calving Index
 110 Legs
 105 Udders

- Great components
- Built for longevity
- The money making kind

	80	90	100	110	120	
STATURE						110 TALL
DAIRYNESS						115 DAIRY
STRENGTH						58 FRAIL
BODY DEPTH						95 SHALLOW
RUMP WIDTH						68 NARROW
RUMP ANGLE						117 SLOPED
LEGS SIDE VIEW						94 STRAIGHT
LEGS REAR VIEW						95 HOCKS IN
FOOT ANGLE						103 STEEP
FORE ATTACHMENT						108 STRONG
REAR UDDER HEIGHT						111 HIGH
REAR UDDER WIDTH						99 NARROW
UDDER CLEFT						61 FLAT
UDDER DEPTH						113 SHALLOW
FRONT TEAT PLACE						90 WIDE
FRONT TEAT LENGTH						104 LONG

249SR1433 **ORRARYD**



W&J ORRARYD 623 (SR X HO)

aAa: 426351 Kappa Casein AB
 14,830 daughters 4,271 herds 95% Rel.
 +1,986M +.04% +84F +.06% +74P
 +2.9 PL 3.12 SCS +595 NM\$

99 Daughter Fertility
 103 Calving Index
 112 Legs
 116 Udders



ORRARYD

- Great milk yield with outstanding components
- A second-crop success
- Calving ease and an udder improver

	80	90	100	110	120	
STATURE						106 TALL
DAIRYNESS						111 DAIRY
STRENGTH						96 FRAIL
BODY DEPTH						90 SHALLOW
RUMP WIDTH						102 WIDE
RUMP ANGLE						91 HIGH PINS
LEGS SIDE VIEW						95 STRAIGHT
LEGS REAR VIEW						112 STRAIGHT
FOOT ANGLE						110 STEEP
FORE ATTACHMENT						108 STRONG
REAR UDDER HEIGHT						111 HIGH
REAR UDDER WIDTH						116 WIDE
UDDER CLEFT						110 STRONG
UDDER DEPTH						113 SHALLOW
FRONT TEAT PLACE						108 CLOSE
FRONT TEAT LENGTH						98 SHORT

249SR2263 **EDBO**



PUREBRED DAUGHTER OF EDBO

aAa: 432516 Kappa Casein AA
 155 daughters 142 herds 75% Rel.
 +1,421M +.11% +76F +.15% +74P
 +0.2 PL 3.24 SCS +403 NM\$

97 Daughter Fertility
 104 Calving Index
 104 Legs
 98 Udders



EDBO

- A high-components dream
- Superior fertility
- Easy calvers

	80	90	100	110	120	
STATURE						99 SHORT
DAIRYNESS						110 DAIRY
STRENGTH						86 FRAIL
BODY DEPTH						107 DEEP
RUMP WIDTH						101 WIDE
RUMP ANGLE						99 HIGH PINS
LEGS SIDE VIEW						113 SET
LEGS REAR VIEW						98 HOCKS IN
FOOT ANGLE						96 LOW
FORE ATTACHMENT						113 STRONG
REAR UDDER HEIGHT						107 HIGH
REAR UDDER WIDTH						98 NARROW
UDDER CLEFT						86 FLAT
UDDER DEPTH						98 DEEP
FRONT TEAT PLACE						109 CLOSE
FRONT TEAT LENGTH						92 SHORT

249SR2236 **HALLOM**



PUREBRED DAUGHTER OF HALLOM

Kappa Casein AA
 116 daughters 102 herds 74% Rel.
 +1,676M +.13% +90F +.06% +65P
 +3.5 PL 3.05 SCS +543 NM\$

100 Daughter Fertility
 116 Calving Index
 102 Legs
 107 Udders



HALLOM

- Peterslund son with excellent production and fat yield
- A calving-ease leader

	80	90	100	110	120	
STATURE						92 SHORT
DAIRYNESS						109 DAIRY
STRENGTH						90 FRAIL
BODY DEPTH						89 SHALLOW
RUMP WIDTH						88 NARROW
RUMP ANGLE						95 HIGH PINS
LEGS SIDE VIEW						105 SET
LEGS REAR VIEW						97 HOCKS IN
FOOT ANGLE						86 LOW
FORE ATTACHMENT						112 STRONG
REAR UDDER HEIGHT						108 HIGH
REAR UDDER WIDTH						92 NARROW
UDDER CLEFT						112 STRONG
UDDER DEPTH						100 SHALLOW
FRONT TEAT PLACE						89 WIDE
FRONT TEAT LENGTH						102 LONG

249SR1213 **PETERSLUND**



W&J PETERSLUND 721 (SR X HO)

aAa: 243615 Kappa Casein AA
 35,501 daughters 8,958 herds 98% Rel.
 +1,635M +.15% +92F +.08% +66P
 +6.1 PL 3.07 SCS +700 NM\$

105 Daughter Fertility
 111 Calving Index
 107 Legs
 112 Udders



PETERSLUND

- Mr. Everything, proven genetics
- No. 1 in Canada for LPI, Fat and Protein
- Calving ease and great udders

	80	90	100	110	120	
STATURE						118 TALL
DAIRYNESS						107 DAIRY
STRENGTH						82 FRAIL
BODY DEPTH						76 SHALLOW
RUMP WIDTH						99 NARROW
RUMP ANGLE						103 SLOPED
LEGS SIDE VIEW						90 STRAIGHT
LEGS REAR VIEW						100 STRAIGHT
FOOT ANGLE						101 STEEP
FORE ATTACHMENT						109 STRONG
REAR UDDER HEIGHT						99 LOW
REAR UDDER WIDTH						94 NARROW
UDDER CLEFT						103 STRONG
UDDER DEPTH						119 SHALLOW
FRONT TEAT PLACE						98 WIDE
FRONT TEAT LENGTH						110 LONG

SWEDISH RED SIRES

	PRICE	Dtrs	Herds	%Rel	Milk	Fat	%Fat	Pro	%Pro	PL	SCS	NM\$	UDC	FLC	DPR	CE	aAa	Kappa Casein	
249SR1967	ANDERSTA	16	185	167	75	1852	67	-.02	69	.06	1.0	2.88	403	99	107	106	243165	AA	
249SR2112	ARBELUNDA	25	173	150	75	506	51	.17	29	.07	3.5	2.56	410	114	123	105	243651	AA	
249SR1011	B JURIST	22	22171	6728	98	1619	73	.05	62	.06	3.8	3.05	533	104	98	102	165234	AB	
249SR3829	BOTANS	18	9267	3732	94	1543	68	.05	63	.07	2.4	2.74	537	105	93	103	315246	AA	
249SR2263	EDBO	20	155	142	75	1421	76	.11	74	.15	0.2	3.24	403	98	104	97	432516	AA	
249SR2269	FIMTA	20	150	128	74	2161	86	.02	74	.03	0.5	2.93	434	108	78	94	432516	AA	
249SR1390	GRANSJO	14	1033	750	86	1174	70	.13	59	.12	3.5	2.77	573	103	92	107	651423	AA	
249SR2104	GUNNARSTORP	22	161	145	75	1117	54	.06	48	.07	4.7	2.61	555	115	115	103	113	561243	AA
249SR2236	HALLOM	30	116	102	74	1676	90	.13	65	.06	3.5	3.05	543	107	102	100	116	N/A	AA
249SR1398	HEDAKER	16	3543	2076	83	2014	58	-.09	59	-.02	5.0	2.81	522	102	82	114	102	135264	BB
249SR1856	HUSEBY	18	189	178	75	175	51	.24	39	.18	1.2	2.94	313	105	104	90	101	243156	AA
249SR2290	INLAG II	18	157	141	75	1913	85	.06	72	.06	3.0	3.04	547	106	104	95	107	435261	AA
249SR1750	J VALON	16	1288	903	77	849	58	.13	32	.03	2.4	2.77	422	103	95	124	111	153624	AA
249SR1678	K LENS	20	4628	2545	88	727	65	.20	35	.06	2.1	2.73	425	120	95	98	81	135246	AA
249SR1997	LANGBO	20	153	137	75	1316	46	-.02	51	.05	3.5	2.77	466	111	109	102	103	165234	AA
249SR1259	LARS	16	4958	3149	95	715	43	.08	30	.04	3.9	2.84	410	110	101	104	88	432615	AA
249SR1916	MELBY	20	180	159	75	562	44	.12	41	.13	3.3	2.80	373	110	103	112	100	165234	AA
249SR1804	O BROLIN	22	3496	1677	77	1104	62	.10	58	.13	6.0	2.88	635	105	110	113	110	162543	AB
249SR1433	ORRARYD	25	14830	4271	95	1986	84	.04	74	.06	2.9	3.12	595	116	112	99	103	426351	AB
249SR2233	P HANDY	16	149	133	75	1771	87	.10	59	.02	3.6	2.91	547	108	98	91	107	243165	N/A
249SR1213	PETERSLUND	30	35501	8958	98	1635	92	.15	66	.08	6.1	3.07	700	112	107	105	111	243615	AA
249SR2264	REGENT	16	172	145	75	719	45	.09	27	.03	5.7	2.73	423	117	111	103	103	N/A	AA
249SR2182	S ADAM	26	188	174	75	1086	60	.09	50	.08	2.4	2.75	435	113	90	104	94	324165	AA
249SR1716	SORBY	22	505	406	76	2219	66	-.10	75	.03	1.6	3.02	481	98	91	106	93	153642	AB
249SR2389	S SIGNAL	22	139	128	74	2330	68	-.10	75	.01	5.4	3.01	640	111	102	109	84	N/A	AA
249SR1757	STENSLANDA	18	609	496	84	1536	57	-.01	51	.02	0.5	2.70	433	119	95	106	99	312456	AA
249SR2232	ST HALLEBO	22	151	134	74	709	59	.17	48	.14	0.8	2.92	318	119	94	101	94	342516	AA
249SR1922	TALEBO	18	185	164	75	1381	78	.13	60	.09	5.8	2.89	643	103	91	111	99	132546	AB
249SR2303	TOMTEBY	20	151	139	75	1748	69	.01	59	.02	4.1	2.85	562	105	100	96	102	561432	BB
249SR1617	VALOR	18	1320	892	84	1258	65	.09	48	.05	0.9	2.66	403	96	101	99	94	615243	AB

MONTBELIARDE SIRES

	PRICE	Dtrs	Herds	%Rel	Milk	Fat	%Fat	Pro	%Pro	PL	SCS	NM\$	UDC	FLC	DPR	CE	aAa	Kappa Casein	
258M01102	MASOLINO	20	21740	7364	95	1396	68	.07	35	-.07	1.0	1.20	N/A	108	120	0.8	88	231465	AB
253M01524	OSMIUM	18	1373	1109	95	1669	49	-.12	22	-.21	0.8	1.70	N/A	106	116	-0.3	88	561432	AB
253M01525	OXALIN	16	9558	4960	95	811	55	.13	26	.01	1.2	0.70	N/A	123	79	0.2	89	156324	AB
248M01528	PAPAYOU	18	93	90	91	1268	46	-.03	37	-.03	0.7	-0.30	N/A	114	111	0.3	91	456321	AB
253M01527	PATINAGE	25	204	181	95	2002	35	-.26	68	.01	1.5	0.50	N/A	109	132	0.7	90	561423	AA
256M01218	PERNAN	22	1317	1002	95	1583	44	-.12	64	.06	0.2	-0.10	N/A	94	100	-0.5	89	654213	AB
257M01001	PLUMITIF	25	327	273	95	2207	79	-.06	75	.00	0.2	-0.10	N/A	101	113	0.0	91	456321	BB
256M01219	POLICHINEL	18	113	100	92	1656	37	-.18	55	-.01	0.2	-0.10	N/A	103	98	-0.5	84	N/A	AB
253M08173	RAI	18	79	76	90	1193	0	-.23	40	.02	-0.2	-1.10	N/A	107	109	-1.0	89	513462	AB
253M07573	RALBAN	20	86	82	91	2018	22	-.38	64	-.02	1.4	0.60	N/A	117	96	0.1	86	N/A	AB
253M01530	RAPALLO	22	90	87	91	1200	75	.15	60	.11	1.4	2.30	N/A	106	106	1.1	89	453621	AB
253M01529	REDON	22	98	90	92	809	49	.09	42	.09	1.8	1.70	N/A	126	111	0.8	88	426351	AB
256M01220	RHESUS	22	74	71	89	1341	119	.42	46	.01	0.0	-0.60	N/A	103	95	-0.8	84	351462	AB
256M08534	SATURNE	20	121	117	93	1411	46	-.09	55	.03	0.5	1.10	N/A	111	100	-0.4	90	513642	AB
253M01017	SIR	26	75	73	89	1028	44	.00	40	.02	1.2	0.60	N/A	114	104	-0.1	91	435261	BB
253M09300	SOLSTICE	18	71	70	89	359	24	.10	29	.12	1.0	-1.20	N/A	116	114	0.6	90	465123	BB
253M03355	TIMOR	20	59	56	85	1142	51	.02	26	-.08	1.0	1.00	N/A	113	115	1.0	91	465123	AB
253M03080	TIPOLI	25	85	85	89	2613	97	-.04	97	.04	0.2	0.00	N/A	101	110	1.0	92	156342	BB

RED DANE SIRES

	PRICE	Dtrs	Herds	%Rel	Milk	Fat	%Fat	Pro	%Pro	PL	SCS	NM\$	UDC	FLC	DPR	CE	aAa	Kappa Casein	
236RD15	R ADMIRAL	22	2221	655	85	342	98	.46	22	.06	4.6	2.77	560	119	116	1.0	95	534126	N/A
228RD17	R ASCONA	22	4534	896	87	1521	74	.08	49	.01	4.3	2.48	594	126	99	-0.6	101	351426	N/A
236RD20	R BACK	20	1369	461	82	2137	52	-.15	58	-.04	1.5	2.70	485	107	102	2.5	104	435621	N/A
236RD19	R BAHAMA	22	3323	738	86	1702	58	-.04	52	-.01	0.8	3.00	307	96	102	-2.4	89	432156	N/A
236RD33	R BANGKOK	22	377	212	75	1220	65	.09	46	.04	4.5	2.55	575	113	106	2.5	89	651423	N/A
236RD18	R BUSH	18	826	400	78	1463	54	-.01	46	.00	2.3	2.94	375	100	119	-0.5	114	531264	N/A
236RD6	R CAJ	14	115	79	74	615	48	.13	29	.05	2.9	2.51	398	115	102	-0.3	98	531246	N/A
228RD35	R CENSOR	18	80	68	73	1702	38	-.14	55	.01	3.1	3.19	383	108	113	0.6	104	423651	N/A
236RD34	R DAVID	22	106	86	74	2010	61	-.08	61	-.01	5.8	2.97	584	111	110	0.5	103	531462	N/A
236RD46	R DEGN	18	80	61	73	1667	71	.04	68	.08	2.9	3.29	479	108	110	-0.2	86	561432	N/A
236RD45	R DRAM	18	110	85	74	1323	62	.06	58	.09	2.2	2.88	442	122	85	-0.2	91	432156	N/A
236RD58	R EFFEKT	18	99	76	73	984	61	.12	36	.03	1.0	2.74	351	120	96	-1.0	104	N/A	N/A
236RD57	R ERIK	18	107	89	73	1700	72	.04	56	.02	0.7	2.85	447	112	105	0.3	97	651432	N/A
236RD59	R FREDÉ	20	99	81	73	875	58	.13	48	.11	3.3	3.00	492	121	117	0.8	101	264153	N/A
228RD11	SYD GARANT	22	3786	970	86	1222	51	.02	47	.05	3.1	2.92	431	120	100	0.8	81	243156	N/A

red - indicates new sire

Stature	Dairyness	Strength	Body Depth	Rump Width	Rump Angle	Legs Side View	Legs Rear View	Foot Angle	Fore UD Attach	Rear UD Height	Rear UD Width	Udder Cleft	Udder Depth	Front Teat Place	Teat Length
106	111	86	96	95	104	116	102	89	89	108	97	97	100	113	101
110	108	95	76	123	97	102	116	96	98	111	96	92	122	102	102
106	105	96	98	101	96	101	91	105	104	114	112	106	101	126	89
88	115	82	89	92	96	118	82	88	115	118	101	75	102	101	94
89	110	86	107	101	99	113	98	96	113	107	98	86	98	109	92
105	91	118	103	117	97	116	83	104	111	83	97	114	99	92	101
95	91	115	95	108	99	99	98	107	108	92	95	105	101	106	94
98	99	99	86	114	97	103	118	99	101	114	110	114	114	112	101
92	109	90	89	88	95	105	97	86	112	106	92	112	100	98	102
91	99	108	106	121	87	114	94	94	116	97	97	117	94	94	99
100	101	99	99	106	102	114	103	99	115	90	95	114	107	97	87
113	107	93	94	111	102	102	99	94	99	97	94	119	105	100	107
99	100	93	99	109	99	116	88	93	97	96	89	114	98	104	111
107	97	97	93	117	88	102	112	97	116	119	120	101	115	104	111
108	111	82	80	94	99	92	103	110	104	96	82	82	121	102	100
91	95	113	91	94	67	101	111	116	119	93	95	104	116	108	87
112	84	88	88	103	109	97	108	101	112	106	99	102	103	96	116
110	115	88	95	66	117	94	95	103	108	111	99	61	113	90	104
106	111	96	90	102	91	95	112	110	108	111	115	110	113	108	98
103	114	74	83	105	100	104	97	91	100	111	106	86	108	94	112
118	107	82	76	99	103	90	100	101	109	99	94	103	119	98	110
99	106	79	79	94	100	100	118	96	119	108	95	94	127	112	90
110	107	100	96	100	99	113	92	99	115	107	93	88	114	102	107
89	101	101	105	98	96	116	103	86	103	111	106	96	90	90	100
102	111	101	103	117	93	111	105	115	124	105	104	107	103	105	94
117	95	100	69	103	116	91	92	102	111	110	100	109	126	89	113
115	88	116	97	118	106	107	102	103	124	91	93	116	112	100	102
105	96	90	88	102	114	96	92	100	99	103	102	103	109	105	80
100	120	96	107	92	100	108	92	106	102	114	107	105	102	122	90
100	99	105	100	99	95	114	111	104	88	108	114	89	100	100	94
Stature	Dairyness	Body Strength	Rump Depth	Rump Width	Legs Angle	Legs Side View	Legs Rear View	Foot Angle	Fore UD Attach	Rear UD Height	Rear UD Width	Udder Cleft	Udder Depth	Front Teat Place	Teat Length
120	N/A	84	98	101	106	75	N/A	129	106	101	110	115	108	108	96
90	N/A	115	97	116	107	91	N/A	136	101	90	115	90	112	101	110
96	N/A	100	98	107	99	96	N/A	57	122	124	96	113	112	114	115
92	N/A	101	100	87	99	103	N/A	110	123	97	110	94	93	114	113
87	N/A	68	71	54	113	96	N/A	130	97	117	110	96	104	125	99
118	N/A	95	105	111	92	102	N/A	111	96	90	102	105	101	108	105
102	N/A	92	101	91	85	82	N/A	95	103	112	105	100	97	115	94
96	N/A	111	92	105	88	101	N/A	95	105	107	97	103	102	103	93
103	N/A	120	119	127	82	98	N/A	108	97	100	117	95	95	109	97
108	N/A	104	103	112	98	112	N/A	95	108	99	110	102	113	116	97
101	N/A	86	90	116	62	104	N/A	114	97	102	106	110	99	115	112
121	N/A	100	120	113	98	85	N/A	104	124	102	102	102	111	135	103
105	N/A	114	111	98	95	111	N/A	94	101	100	95	111	99	102	101
89	N/A	94	88	105	92	108	N/A	102	112	103	119	128	101	87	119
105	N/A	101	99	117	101	93	N/A	102	112	108	117	89	120	123	115
98	N/A	82	94	96	99	92	N/A	110	103	111	112	107	107	130	109
95	N/A	102	101	114	73	88	N/A	111	113	105	107	113	114	111	95
108	N/A	102	95	97	94	95	N/A	104	109	96	120	123	85	112	91
Stature	Dairyness	Strength	Body Depth	Rump Width	Rump Angle	Legs Side View	Legs Rear View	Foot Angle	Fore UD Attach	Rear UD Height	Rear UD Width	Udder Cleft	Udder Depth	Front Teat Place	Teat Length
101	103	96	94	90	83	93	121	114	126	108	113	82	117	112	102
109	107	105	104	106	85	81	110	98	129	126	131	115	113	118	102
100	101	106	101	110	88	100	112	94	117	113	128	87	98	85	102
107	110	99	98	102	91	90	111	111	100	103	105	100	105	103	68
107	89	119	126	124	84	100	108	106	118	102	116	115	111	110	84
104	112	87	94	109	91	90	108	102	99	110	116	96	102	76	88
101	94	112	112	113	102	87	104	90	124	112	121	114	116	111	74
111	111	86	99	107	97	92	108	101	105	111	108	94	109	110	92
111	97	101	95	108	95	86	113	106	113	120	116	96	108	96	89
102	104	103	120	118	80	89	110	111	111	112	103	115	102	96	87
107	99	129	118	105	76	103	104	96	137	110	114	104	109	116	102
119	118	91	103	105	91	96	108	96	121	114	108	113	115	105	105
120	122	99	112	112	91	93	100	105	106	114	109	106	112	89	97
108	129	67	86	92	101	90	118	103	106	124	113	107	118	111	108
115	119	107	109	102	81	95	114	109	123	113	113	100	116	108	106

253M01529 REDON



PUREBRED DAUGHTER OF REDON

aAa: 426351 Kappa Casein AB
 98 daughters 90 herds 92% Rel.
 +809M +.09% +49F +.09% +42P
 +1.8 PL 1.70 SCS

0.8 Daughter Fertility
 88 Calving Index
 111 Legs
 126 Udders

- Complete and balanced
- Sires great udders
- Tied for No. 1 in France with Rapallo

	78	88	100	112	124	
STATURE					121	TALL
STRENGTH					100	STRONG
BODY DEPTH					120	DEEP
RUMP WIDTH					113	WIDE
RUMP ANGLE					98	HIGH PINS
LEGS SIDE VIEW					85	STRAIGHT
FOOT ANGLE					104	STEEP
FORE ATTACHMENT					124	STRONG
REAR UDDER HEIGHT					102	HIGH
REAR UDDER WIDTH					102	WIDE
UDDER CLEFT					102	STRONG
UDDER DEPTH					111	SHALLOW
FRONT TEAT PLACE					135	CLOSE
FRONT TEAT LENGTH					103	LONG

253M03355 TIMOR



PUREBRED DAUGHTER OF TIMOR

aAa: 465123 Kappa Casein AB
 59 daughters 56 herds 85% Rel.
 +1,142M .02% +51F -.08% +26P
 +1.0 PL 1.00 SCS

1.0 Daughter Fertility
 91 Calving Index
 115 Legs
 113 Udders

- Easy calvers
- Great milk production
- Great linear for udders

	78	88	100	112	124	
STATURE					95	SHORT
STRENGTH					102	STRONG
BODY DEPTH					101	DEEP
RUMP WIDTH					114	WIDE
RUMP ANGLE					73	HIGH PINS
LEGS SIDE VIEW					88	STRAIGHT
FOOT ANGLE					111	STEEP
FORE ATTACHMENT					113	STRONG
REAR UDDER HEIGHT					105	HIGH
REAR UDDER WIDTH					107	WIDE
UDDER CLEFT					113	STRONG
UDDER DEPTH					114	SHALLOW
FRONT TEAT PLACE					111	CLOSE
FRONT TEAT LENGTH					95	SHORT

256M08534 SATURNE



PUREBRED DAUGHTER OF SATURNE

aAa: 513642 Kappa Casein AB
 121 daughters 117 herds 93% Rel.
 +1,411M -.09% +46F +.03% +55P
 +0.5 PL 1.10 SCS

-0.4 Daughter Fertility
 90 Calving Index
 100 Legs
 111 Udders

- Great production from welded-on udders
- Calving ease with moderate stature
- High-protein yields

	78	88	100	112	124	
STATURE					89	SHORT
STRENGTH					94	FRAIL
BODY DEPTH					88	SHALLOW
RUMP WIDTH					105	WIDE
RUMP ANGLE					92	HIGH PINS
LEGS SIDE VIEW					108	SET
FOOT ANGLE					102	STEEP
FORE ATTACHMENT					112	STRONG
REAR UDDER HEIGHT					103	HIGH
REAR UDDER WIDTH					119	WIDE
UDDER CLEFT					128	STRONG
UDDER DEPTH					101	SHALLOW
FRONT TEAT PLACE					87	WIDE
FRONT TEAT LENGTH					119	LONG

253M01530 RAPALLO



PUREBRED DAUGHTER OF RAPALLO

aAa: 453621 Kappa Casein AB
 90 daughters 87 herds 91% Rel.
 +1,200M +.15% +75F +.11% +60P
 +1.4 PL 2.30 SCS

1.1 Daughter Fertility
 89 Calving Index
 106 Legs
 106 Udders

- Steep foot angle and good rear udders
- Siring superior components and good production
- Good fertility

	78	88	100	112	124	
STATURE					101	TALL
STRENGTH					86	FRAIL
BODY DEPTH					90	SHALLOW
RUMP WIDTH					116	WIDE
RUMP ANGLE					62	HIGH PINS
LEGS SIDE VIEW					104	STEEP
FOOT ANGLE					114	STEEP
FORE ATTACHMENT					97	LOOSE
REAR UDDER HEIGHT					102	HIGH
REAR UDDER WIDTH					106	WIDE
UDDER CLEFT					110	STRONG
UDDER DEPTH					99	DEEP
FRONT TEAT PLACE					115	CLOSE
FRONT TEAT LENGTH					112	LONG

248M01528 PAPAYOU



PUREBRED DAUGHTER OF PAPAYOU

aAa: 456321 Kappa Casein AB
 93 daughters 90 herds 91% Rel.
 +1,268M -.03% +46F -.03% +37P
 +0.7 PL -.30 SCS

0.3 Daughter Fertility
 91 Calving Index
 111 Legs
 114 Udders

- Superior milk production with great yield traits
- A calving-ease leader
- Will moderate frame size

	78	88	100	112	124	
STATURE					92	SHORT
STRENGTH					101	STRONG
BODY DEPTH					100	DEEP
RUMP WIDTH					87	NARROW
RUMP ANGLE					99	HIGH PINS
LEGS SIDE VIEW					103	SET
FOOT ANGLE					110	STEEP
FORE ATTACHMENT					123	STRONG
REAR UDDER HEIGHT					97	LOW
REAR UDDER WIDTH					110	WIDE
UDDER CLEFT					94	FLAT
UDDER DEPTH					93	DEEP
FRONT TEAT PLACE					114	CLOSE
FRONT TEAT LENGTH					113	LONG

236RD57 R ERIK



DAUGHTER OF R ERIK

aAa: 651432
 107 daughters 89 herds 73% Rel.
 +1,700M +.04% +72F +.02% +56P
 +0.7 PL 2.85 SCS +447 NM\$

0.3 Daughter Fertility
 97 Birth Index
 105 Legs
 112 Udders

- High-fat and super milk yield
- Exceptional udder traits
- Adds stature and dairyness

	80	90	100	110	120	
STATURE						TALL
DAIRYNESS						DAIRY
STRENGTH						FRAIL
BODY DEPTH						DEEP
RUMP WIDTH						WIDE
RUMP ANGLE						HIGH PINS
LEGS SIDE VIEW						STRAIGHT
LEGS REAR VIEW						STRAIGHT
FOOT ANGLE						STEEP
FORE ATTACHMENT						STRONG
REAR UDDER HEIGHT						HIGH
REAR UDDER WIDTH						WIDE
UDDER CLEFT						STRONG
UDDER DEPTH						SHALLOW
FRONT TEAT PLACE						WIDE
FRONT TEAT LENGTH						SHORT
BLOODLINE: 54.6875% Holstein, 16.405% Swedish Red, 8.5937% Ayrshire, 6.25% Red Holstein						

236RD34 R DAVID



DAUGHTER OF R DAVID

aAa: 531462
 106 daughters 86 herds 74% Rel.
 +2,010M -.08% +61F -.01% +61P
 +5.8 PL 2.97 SCS +584 NM\$

0.5 Daughter Fertility
 103 Birth Index
 110 Legs
 111 Udders

- Excellent udders
- High milk, fat and protein yields
- A top NM\$ sire



R DAVID DAUGHTER

	80	90	100	110	120	
STATURE						TALL
DAIRYNESS						ROUND
STRENGTH						STRONG
BODY DEPTH						SHALLOW
RUMP WIDTH						WIDE
RUMP ANGLE						HIGH PINS
LEGS SIDE VIEW						STRAIGHT
LEGS REAR VIEW						STRAIGHT
FOOT ANGLE						STEEP
FORE ATTACHMENT						STRONG
REAR UDDER HEIGHT						HIGH
REAR UDDER WIDTH						WIDE
UDDER CLEFT						STRONG
UDDER DEPTH						SHALLOW
FRONT TEAT PLACE						WIDE
FRONT TEAT LENGTH						SHORT
BLOODLINE: 28.125% Red Dane, 28.125% Swedish Red, 25% Holstein, 18.75% Brown Swiss						

EXPLANATION OF TRAITS

The production traits genetic evaluations for the Swedish Red and Red Dane are August 2009 Interbull MACE proofs based on the U.S. Ayrshire genetic base. The Montbeliarde genetic evaluations are June 2009 French evaluations processed by INRA (French Agronomic Research Institute). All type trait information is on an in-country basis, with summarization equal to their production dates.

DAUGHTER FERTILITY

Swedish Red – Fertility data on sires' daughters expressed around a mean of 100 and a +/- 10 standard deviation. Higher values are favorable.

Montbeliarde – Fertility data on sires' daughters expressed around a mean of 0 with a +/- 1 standard deviation. Higher values are favorable.

Red Dane - Fertility data on sires' daughters expressed around a mean of 100 and a +/- 10 standard deviation. Higher values are favorable.

CALVING EASE (INDEX)

Swedish Red – Expression of the vitality of the calf at birth expressed around a mean of 100 and a +/- 10 standard deviation. Calving Index = Calving Ease + Calf Viability. Higher values are favorable.

Montbeliarde – Percentage of easy calvings on first parity cows. Greater than (>) 89 percent means easy calving sire and less than (<) 86 percent means not recommended for use on heifers.

Danish Red - (Birth Index) - The breeding value describing the ability of sires to breed easy born and live born calves at first parity expressed around a mean of 100 and a +/- 10 standard deviation. Higher values are favorable.

UDDER, FEET & LEG INDEX, LINEAR TYPE TRAITS

Swedish Red – Compilation of the linear type traits expressed around a mean of 100 and a +/- 10 standard deviation.

Montbeliarde – Compilation of the linear type traits expressed around a mean of 100 and a +/- 12 standard deviation.

Red Dane - Compilation of linear type traits expressed around a mean of 100 and a +/- 10 standard deviation.



The seal of certified Swedish Red bulls proven in Sweden with extensive emphasis on fertility, somatic cell count, longevity, and calving ease. If they are "real" Swedish Red bulls they will carry this trademarked logo. All bulls carrying this seal are available in the USA from your Select Sires representative.

For further information about these breeds and their genetic evaluations, visit the breed web sites listed below:

MONTBELIARDE
www.coopex.com

SWEDISH RED and RED DANE
www.vikinggenetics.dk/en/



Phone: (800) 640-2855
 Fax: (209) 848-1538
www.creativegeneticsofca.com



Phone: (614) 873-4683
 Fax: (614) 873-5751
www.selectsires.com