

Limestone

# GREAT DIVIDE

U254

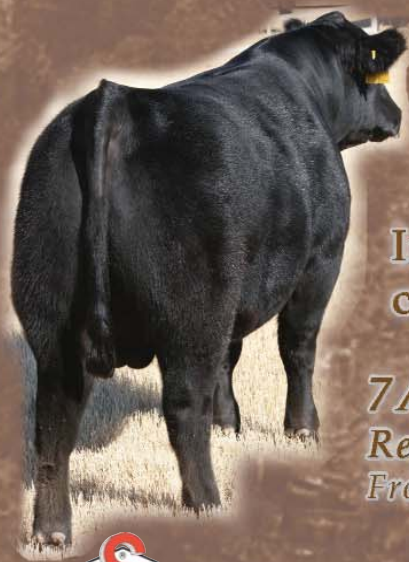


The Lead Bull in the  
Champion Pen of Three at the  
2009 National Western Stock Show

Semen: \$20 Certificate: \$35

Spring 2009 National Angus Sire Evaluation Report

	CED	BW	WW	YW	YH	SC	CEM	Milk	Dt/Hd	\$EN	CW	Marb	RE	Fat	C/G/P	U/G/P	\$W	\$F	\$G	\$B
EPD	+2	+2.9	+57	+100	+2	+73	+2	+24	0	-5.61	+24	+1.08	+4.2	+1.011	0	0	+27.54	+36.52	+8.83	+39.19
Acc	.26	.36	.27	.36	.05	.23	.13	.17	0		.07	.10	.14	.08	0	0				
% Rank			10	10		25		25			5		10	20			20	15		



Incredible specimen of muscle, soundness,  
capacity & good looks

7AN309 Limestone Great Divide U254  
Reg: 16165411 Sire: B C Marathon MGS: 6807  
From: Limestone LLC, OK & Reisig Cattle, MT



Select Sires, Inc • Plain City, OH • 614-873-4683 • www.selectsires.com