


# MARCH GFORCE™ SIRES

## HEMI

7H016754 HOUIN SIEMERS SALS HEMI-ET   
 8403248153423 99% RHA-I TR TP TC TM TV TL TY TD  
 DMS: 123,135 aAa: 234 B-Casein: A1A2 K-Casein: BB MWT



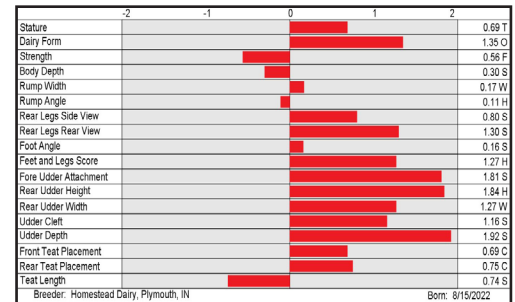
PLAIN-KNOLL MOGUL MARIAH (VG-88-VG-MS-GMD-DOM)  
 Fifth Dam of HEMI

S: S-S-I HD Conway SALSBURY-ET  
 D: Houin SSI Conway 359 551-ET  
 MGS: Sandy-Valley R CONWAY-ET  
 MGD: Houin S-S-I 16 359-ET  
 MGGS: Pine-Tree CW LEGACY-ET


CDCB-S Genomic Evaluation		(12/23)	
Milk	+592 79%R	Net Merit (73%R)	+\$1,137
Protein	+0.11% +50	DWPS*	+\$1,094
Fat	+0.28% +103	Cheese Merit	+\$1,160

CDCB-S/HA Genomic Evaluation		(12/23)	
Type	+1.30	UDC	+1.53
FLC	+1.14	BWC	-0.87
78%R		GTPI <sup>1</sup>	+3095

Health and Fertility		(12/23)	
SCS	2.75 75%R	MAS	+2.9 70%R
LIV	+2.4 70%R	DPR	+1.7 74%R
CCR	+4.0 74%R	FI	+2.1 74%R
WT\$*	+\$85	DCE	1.6% 57%R
CW\$*	-\$47	HHP\$*	+\$1,166
		PL	+7.7 74%R
		HCR	+2.1 72%R
		SCE	1.9% 63%R
		DSB	3.9% 55%R



## STEPHAN

7H016916 S-S-I GEORGEMLLR STEPHAN-ET   
 8403253835466 99% RHA-I TR TP TC TM TV TL TY TD  
 DMS: 135,123 aAa: 324 B-Casein: A1A2 K-Casein: AB MWT



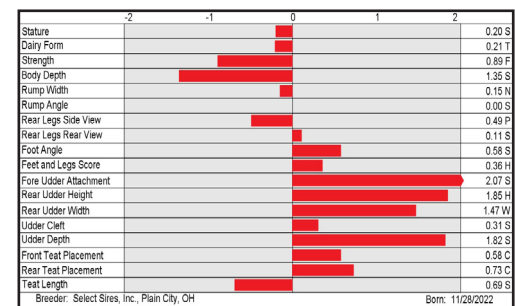
S-S-I HOR 11579 3344-ET (GP-80)  
 Third Dam of STEPHAN

S: Lars-Acres GEORGE MILLER-ET  
 D: Horsens S-S-I 4050 2589-ET (GP-81)  
 MGS: RMD-Dotterer SSI GAMEDAY-ET  
 MGD: Horsens S-S-I 3344 4050-ET  
 MGGS: Peak Altazarek-ET

CDCB-S Genomic Evaluation		(12/23)	
Milk	+1,023 79%R	Net Merit (73%R)	+\$1,186
Protein	+0.09% +58	DWPS*	+\$1,223
Fat	+0.19% +95	Cheese Merit	+\$1,212

CDCB-S/HA Genomic Evaluation		(12/23)	
Type	+0.85	UDC	+1.73
FLC	+0.38	BWC	-0.72
79%R		GTPI <sup>1</sup>	+3102

Health and Fertility		(12/23)	
SCS	2.50 75%R	MAS	+3.8 70%R
LIV	+2.2 71%R	DPR	+1.4 73%R
CCR	+4.1 73%R	FI	+1.7 73%R
WT\$*	+\$112	DCE	2.1% 57%R
CW\$*	-\$18	HHP\$*	+\$1,280
		PL	+8.2 74%R
		HCR	+2.6 72%R
		SCE	2.4% 63%R
		DSB	4.3% 55%R



-  =gender SELECTED\*
-  =Mastitis ResistantPRO\*
-  =FeedPRO\*
-  =RobotPRO\*
-  =GrazingPRO\*


**YOUR SUCCESS** *Our Passion.*

Phone: (614) 873-4683 ♦ [www.selectsires.com](http://www.selectsires.com)

\*Mastitis ResistantPRO, FeedPRO, RobotPRO, GrazingPRO, HHP\$, Your Success Our Passion, and the Select Sires logo are registered trademarks of Select Sires Inc., Plain City, OH. TPI is a registered trademark of Holstein Association USA. DWPS and WTS are registered trademarks of Zoetis Inc., and its affiliates and/or its licensors. Zoetis wellness values are based on February 2024 Zoetis data. \*CW\$ is a trademark of Zoetis Inc., and its affiliates and/or its licensors. GForce and gender SELECTED are trademarks of Select Sires Inc. All gender SELECTED semen is processed using Ultraplus™ Technology. Ultraplus is a trademark of STGen LLC.

# MARCH GFORCE™ SIRES

## SANBORN

7H016966 OCD HAYK SANBORN-ET   
 8403251665537 99% RHA-I TR TP TC TM TV TL TY TD  
 DMS: 561,126 aAa: 342 B-Casein: A2A2 K-Casein: AB MWT



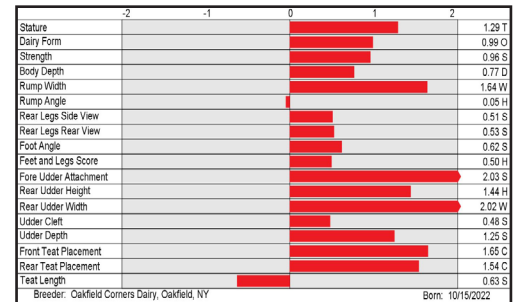
OCD ACURA SOY 60075-ET (VG-88-EX-MS)  
 Grandam of SANBORN

S: Welcome-Tel Taos HAYK-ET  
 D: OCD Gameday Soy 64855-ET  
 MGS: RMD-Dotterer SSI GAMEDAY-ET  
 MGD: OCD Acura Soy 60075-ET (VG-88-EX-MS)  
 MGGS: Pine-Tree Acura-ET


CDCB-S Genomic Evaluation		(12/23)	
Milk	+1,259 80%R	Net Merit (73%R)	+\$1,106
Protein	+0.09% +65	DWPS*	+\$1,044
Fat	+0.22% +112	Cheese Merit	+\$1,125

CDCB-S/HA Genomic Evaluation		(12/23)	
Type	+1.38	UDC	+1.33
FLC	+0.25	BWC	+0.86
79%R		GTP1*	+3129

Health and Fertility		(12/23)	
SCS	2.80 75%R	MAS	+3.3 70%R
LIV	+2.1 71%R	DPR	+1.4 74%R
CCR	+3.3 73%R	FI	+1.9 73%R
WT\$*	-\$25	DCE	2.3% 57%R
CWS*	-\$38	HHP\$*	+\$1,266
PL	+6.1 74%R	HCR	+2.5 72%R
SCE	2.3% 63%R	DSB	4.9% 55%R



## COACH-RED

7H016975 APRILDAY REBEL COACH-RED-ET   
 8403252208433 99% RHA-I TP TC TM TL TD TV TY  
 DMS: 135,345 aAa: 342 B-Casein: A2A2 K-Casein: BB MWT



APRILDAY ZEBRA CUVEE-RED-ET (VG-85-VG-MS)  
 Dam of COACH-RED

S: Bosside Rubel REBEL-RED-ET  
 D: Aprilday Zebra Cuvee-Red-ET (VG-85-VG-MS)  
 MGS: Blumenfeld Zebra-ET  
 MGD: Aprilday Marius Crucervo-ET (VG-85-VG-MS)  
 MGGS: Progenesis Marius

CDCB-S Genomic Evaluation		(12/23)	
Milk	+981 79%R	Net Merit (73%R)	+\$699
Protein	+0.05% +45	DWPS*	+\$662
Fat	+0.08% +62	Cheese Merit	+\$713

CDCB-S/HA Genomic Evaluation		(12/23)	
Type	+1.32	UDC	+1.44
FLC	-0.23	BWC	-0.12
78%R		GTP1*	+2712

Health and Fertility		(12/23)	
SCS	2.76 75%R	MAS	+2.2 70%R
LIV	+1.3 71%R	DPR	+0.1 74%R
CCR	+1.0 74%R	FI	+0.5 73%R
WT\$*	+\$12	DCE	2.2% 57%R
CWS*	-\$63	HHP\$*	+\$831
PL	+3.6 74%R	HCR	+0.8 71%R
SCE	2.3% 63%R	DSB	4.7% 55%R



**YOUR SUCCESS** *Our Passion.*

Phone: (614) 873-4683 ♦ [www.selectsires.com](http://www.selectsires.com)



\*FeedPRO, HHP\$, Your Success Our Passion, and the Select Sires logo are registered trademarks of Select Sires Inc., Plain City, OH. TPI is a registered trademark of Holstein Association USA. DWPS and WT\$ are registered trademarks of Zoetis Inc., and its affiliates and/or its licensors. Zoetis wellness values are based on February 2024 Zoetis data. "CW\$ is a trademark of Zoetis Inc., and its affiliates and/or its licensors. Gforce and gender SELECTED are trademarks of Select Sires Inc. All gender SELECTED semen is processed using Ultraplus™ Technology. Ultraplus is a trademark of STGen LLC.

# MARCH GFORCE™ SIRES

## DYNAMITE

7H017007 SHELAND LETCHW DYNAMITE-ET   
 8403230499290 99% RHA-I TR TP TC TM TV TL TY TD  
 DMS: 345,135 aAa: 321 B-Casein: A1A2 K-Casein: BB MWT



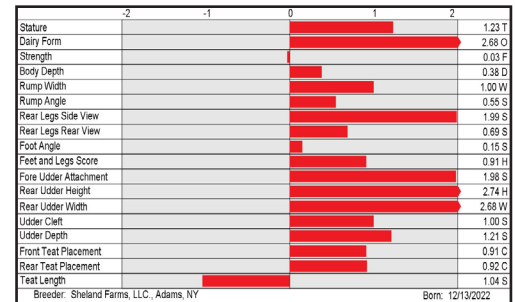
SHELAND DUKE DAYLILY-ET (VG-85-VG-MS)  
 Third Dam of DYNAMITE

S: Aurora LETCHWORTH-ET  
 D: Sheland Drive DIZZY-ET  
 MGS: Kings-Ransom Legacy DRIVE-ET  
 MGD: Sheland Riveting Dawn-ET (VG-85-VG-MS)  
 MGGS: S-S-I BG Frzzld RIVETING-ET

CDCB-S Genomic Evaluation		(12/23)	
Milk	+1,256 79%R	Net Merit (73%R)	+\$1,162
Protein	+0.06% +58	DWPS*	+\$1,101
Fat	+0.22% +114	Cheese Merit	+\$1,176

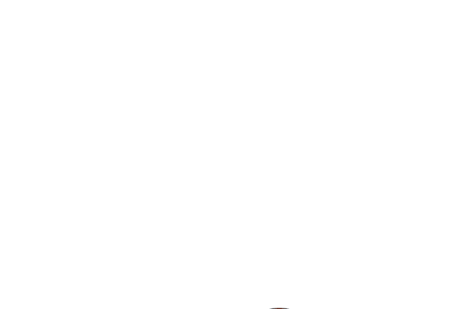
CDCB-S/HA Genomic Evaluation		(12/23)								
Type	+2.36	UDC	+1.81	FLC	+0.53	BWC	-0.80	78%R	GTPI <sup>1</sup>	+3168

Health and Fertility		(12/23)			
SCS	2.83 75%R	MAS	+0.7 70%R	PL	+5.7 74%R
LIV	+2.5 70%R	DPR	+0.9 73%R	HCR	+3.1 72%R
CCR	+3.0 73%R	FI	+1.7 73%R	SCE	1.6% 63%R
WT\$*	+\$9	DCE	1.8% 57%R	DSB	3.4% 55%R
CW\$*	-\$39	HHP\$*	+\$1,101		



## INDEED

7H017040 PEN-COL FROST INDEED-ET   
 8403247091597 99% RHA-I TR TP TC TM TV TL TY TD  
 DMS: 234,246 aAa: 453 B-Casein: A2A2 K-Casein: AA MWT



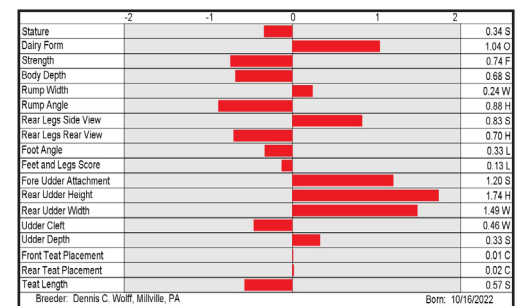
PEN-COL FROST INDEED-ET

S: T-Spruce G FROST BITE-ET  
 D: Pen-Col Gameday Glamour-ET  
 MGS: RMD-Dotterer SSI GAMEDAY-ET  
 MGD: Pen-Col Legacy Best-ET (EX-90-EX-MS)  
 MGGS: Pine-Tree CW LEGACY-ET

CDCB-S Genomic Evaluation		(12/23)	
Milk	+1,172 79%R	Net Merit (73%R)	+\$1,246
Protein	+0.08% +61	DWPS*	+\$1,262
Fat	+0.28% +126	Cheese Merit	+\$1,268

CDCB-S/HA Genomic Evaluation		(12/23)								
Type	+0.63	UDC	+1.09	FLC	-0.23	BWC	-1.11	78%R	GTPI <sup>1</sup>	+3121

Health and Fertility		(12/23)			
SCS	2.65 75%R	MAS	+2.4 70%R	PL	+6.3 74%R
LIV	+3.0 71%R	DPR	-0.2 74%R	HCR	+2.8 72%R
CCR	+1.8 73%R	FI	+0.9 73%R	SCE	1.7% 63%R
WT\$*	+\$49	DCE	1.8% 57%R	DSB	3.9% 55%R
CW\$*	-\$48	HHP\$*	+\$1,242		



**YOUR SUCCESS** *Our Passion.*

Phone: (614) 873-4683 ♦ [www.selectsires.com](http://www.selectsires.com)



\*FeedPRO, RobotPRO, HHP\$, Your Success Our Passion, and the Select Sires logo are registered trademarks of Select Sires Inc., Plain City, OH. TPI is a registered trademark of Holstein Association USA. DWPS and WT\$ are registered trademarks of Zoetis Inc., and its affiliates and/or its licensors. Zoetis wellness values are based on February 2024 Zoetis data. "CW\$ is a trademark of Zoetis Inc., and its affiliates and/or its licensors. GForce and gender SELECTED are trademarks of Select Sires Inc. All gender SELECTED semen is processed using Ultraplus™ Technology. Ultraplus is a trademark of STGen LLC.



# MARCH GFORCE™ SIRES

## KAREEM

7H017107 T-SPRUCE ESQUIRE KAREEM-ET  
8403260815016 99% RHA-I TR TP TC TM TV TL TY TD  
B-Casein: A2A2 K-Casein: AA MWT



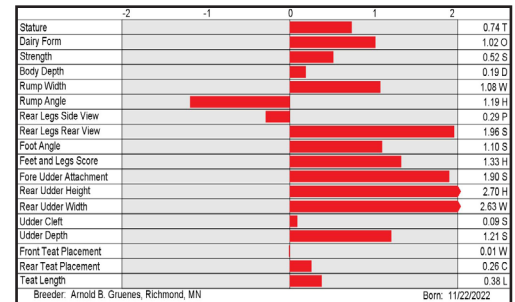
CDCB-S Genomic Evaluation			(12/23)	
Milk	+1,586	79%R	Net Merit (73%R)	+\$1,049
Protein	+0.07%	+70	DWPS*	+\$1,113
Fat	+0.13%	+100	Cheese Merit	+\$1,067



CDCB-S/HA Genomic Evaluation						(12/23)				
Type	+1.81	UDC	+1.76	FLC	+1.40	BWC	+0.26	78%R	GTPI <sup>1</sup>	+3133

Health and Fertility			(12/23)					
SCS	2.74	75%R	MAS	+1.1	70%R	PL	+5.5	74%R
LIV	+0.0	70%R	DPR	+0.7	74%R	HCR	+3.6	72%R
CCR	+3.1	74%R	FI	+1.7	74%R	SCE	2.4%	63%R
WT\$	+\$105		DCE	2.7%	57%R	DSB	5.0%	55%R
CW\$	-\$42		HHP\$*	+\$1,141				

S: Sandy-Valley ESQUIRE-ET  
D: T-Spruce Perfect 16601-ET  
MGS: Siemers Rengd PARFECT-ET  
MGD: T-Spruce Lionel 13196-ET (GP-83-DOM)  
MGGS: Mr T-Spruce Frazz LIONEL-ET



## HADES

7H017131 COOKIECUTTER HAYK HADES-ET  
8403243272597 99% RHA-I TR TP TC TM TV TL TY TD  
B-Casein: A1A2 K-Casein: BB MWT



CDCB-S Genomic Evaluation			(12/23)	
Milk	+1,097	79%R	Net Merit (73%R)	+\$1,188
Protein	+0.11%	+67	DWPS*	+\$1,192
Fat	+0.25%	+115	Cheese Merit	+\$1,215



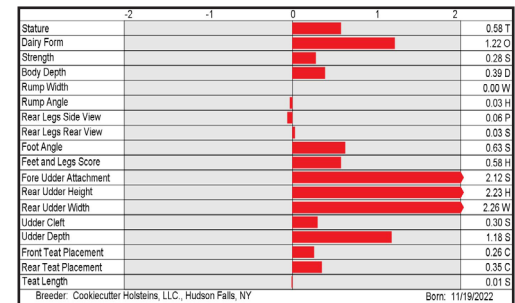
CDCB-S/HA Genomic Evaluation						(12/23)				
Type	+1.35	UDC	+1.69	FLC	+0.37	BWC	-0.21	78%R	GTPI <sup>1</sup>	+3156

Health and Fertility			(12/23)					
SCS	2.58	75%R	MAS	+4.1	70%R	PL	+6.5	74%R
LIV	+1.7	70%R	DPR	-0.1	73%R	HCR	-0.4	71%R
CCR	+1.0	73%R	FI	+0.5	73%R	SCE	2.3%	63%R
WT\$	-\$2		DCE	2.2%	57%R	DSB	4.1%	55%R
CW\$	-\$18		HHP\$*	+\$1,263				



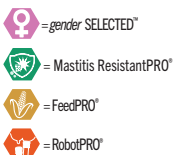
COOKIECUTTER AL HAUSEN-ET (VG-88-EX-MS)  
Grandam of HADES

S: Welcome-Tel Taos HAYK-ET  
D: Cookiecutter Hjmp Halise-ET  
MGS: AOT Highjump-ET  
MGD: Cookiecutter Al Hausen-ET (VG-88-EX-MS)  
MGGS: A-S-Cannon Frzzld BIG AL-ET



**YOUR SUCCESS** *Our Passion.*

Phone: (614) 873-4683 ♦ [www.selectsires.com](http://www.selectsires.com)



\*Mastitis ResistantPRO, FeedPRO, RobotPRO, HHP\$, Your Success Our Passion, and the Select Sires logo are registered trademarks of Select Sires Inc., Plain City, OH. TPI is a registered trademark of Holstein Association USA. DWPS and WT\$ are registered trademarks of Zoetis Inc., and its affiliates and/or its licensors. Zoetis wellness values are based on February 2024 Zoetis data. "CW\$" is a trademark of Zoetis Inc., and its affiliates and/or its licensors. GForce and gender SELECTED are trademarks of Select Sires Inc. All gender SELECTED semen is processed using Ultraplus™ Technology. Ultraplus is a trademark of STGen LLC.



# MARCH GFORCE™ SIRES

## EXCLUSIVE-RED

7H017155 TRENT-WAY EXCLUSIVE-RED-ET  
8403240737692 99% RHA-I TP TC TM TV TL TY TD  
aAa: 342 B-Casein: A2A2 K-Casein: AB MWT



CDCB-S Genomic Evaluation		(12/23)	
Milk	+975 79%R	Net Merit (73%R)	+\$874
Protein	+0.06% +47	DWPS*	+\$877
Fat	+0.18% +89	Cheese Merit	+\$885

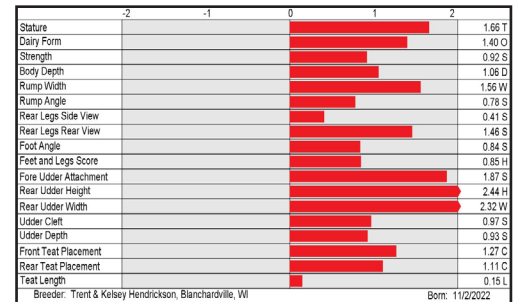
CDCB-S/HA Genomic Evaluation		(12/23)	
Type	+2.11	UDC	+1.53
FLC	+0.67	BWC	+0.74
79%R		GTPI <sup>1</sup>	+2933

Health and Fertility		(12/23)	
SCS	2.91 75%R	MAS	+1.8 70%R
LIV	+1.5 70%R	DPR	+0.9 74%R
CCR	+1.7 74%R	FI	+1.4 74%R
WT\$ <sup>2</sup>	+\$20	DCE	1.6% 57%R
CW\$ <sup>3</sup>	+\$6	HHP\$ <sup>4</sup>	+\$938
		PL	+4.6 74%R
		HCR	+1.4 72%R
		SCE	1.7% 62%R
		DSB	3.9% 55%R



TRENT-WAY ESSAY-ET (VG-87-VG-MS)  
Dam of EXCLUSIVE-RED

S: Jimtown Network-Red-ET  
D: Trent-Way Essay-ET (VG-87-VG-MS)  
MGS: Siemers Rengd PARFECT-ET  
MGD: Morningview Altuve 6683-ET (VG-87-VG-MS)  
MGGS: Peak Altaaltuve-ET



## DRYDON

14H016836 HOUIN SSI HAYK DRYDON-ET  
8403252802768 99% RHA-I TR TP TC TM TV TL TY TD  
DMS: 126,123 aAa: 342 B-Casein: A2A2 K-Casein: AB MWT



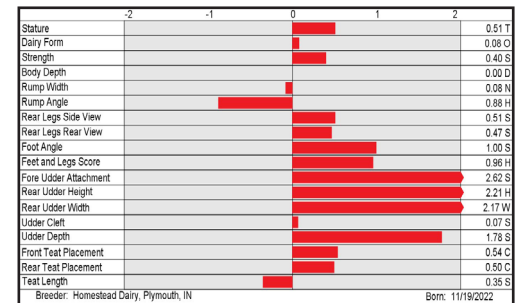
CDCB-S Genomic Evaluation		(12/23)	
Milk	+1,084 79%R	Net Merit (73%R)	+\$1,157
Protein	+0.12% +69	DWPS*	+\$1,320
Fat	+0.21% +104	Cheese Merit	+\$1,184

CDCB-S/HA Genomic Evaluation		(12/23)	
Type	+1.70	UDC	+1.89
FLC	+0.80	BWC	+0.35
78%R		GTPI <sup>1</sup>	+3156

Health and Fertility		(12/23)	
SCS	2.66 75%R	MAS	+3.9 70%R
LIV	+2.3 71%R	DPR	+0.0 74%R
CCR	+1.1 73%R	FI	+0.5 73%R
WT\$ <sup>2</sup>	+\$191	DCE	2.4% 57%R
CW\$ <sup>3</sup>	-\$4	HHP\$ <sup>4</sup>	+\$1,295
		PL	+6.8 74%R
		HCR	+0.5 72%R
		SCE	2.2% 63%R
		DSB	4.9% 55%R



S: Welcome-Tel Taos HAYK-ET  
D: Houin SSI Gameday 674-ET  
MGS: RMD-Dotterer SSI GAMEDAY-ET  
MGD: S-S-I HD 12077 354-ET (GP-83)  
MGGS: Peak Altazarek-ET



**YOUR SUCCESS** *Our Passion.*

Phone: (614) 873-4683 ♦ [www.selectsires.com](http://www.selectsires.com)

- = gender SELECTED\*
- = Mastitis ResistantPRO\*
- = FeedPRO\*
- = RobotPRO\*

\*Mastitis ResistantPRO, FeedPRO, RobotPRO, HHP\$, Your Success Our Passion, and the Select Sires logo are registered trademarks of Select Sires Inc., Plain City, OH. TPI is a registered trademark of Holstein Association USA. DWPS and WT\$ are registered trademarks of Zoetis Inc., and its affiliates and/or its licensors. Zoetis wellness values are based on February 2024 Zoetis data. \*CW\$ is a trademark of Zoetis Inc., and its affiliates and/or its licensors. GForce and gender SELECTED are trademarks of Select Sires Inc. All gender SELECTED semen is processed using Ultraplus™ Technology. Ultraplus is a trademark of STGen LLC.

# MARCH GFORCE™ SIREs

## RODNEY

14H016860 LARS-ACRES HAYK RODNEY-ET  
8403248215066 99% RHA-I TR TP TC TM TV TL TY TD  
DMS: 135,561 B-Casein: A2A2 K-Casein: BB MWT



Accelerated Genetics™



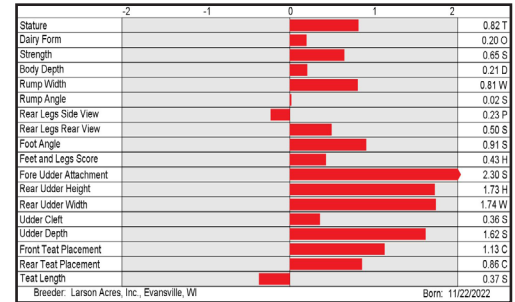
S: Welcome-Tel Taos HAYK-ET  
D: Houin SSI Top Dog 25967-ET (GP-80)  
MGS: Bomaz TOP DOG-ET  
MGD: Houin S-S-I 16 359-ET  
MGGs: Pine-Tree CW LEGACY-ET

HOUIN SSI TOP DOG 25967-ET (GP-80)  
Dam of RODNEY

CDCB-S Genomic Evaluation		(12/23)	
Milk	+1,051 79%R	Net Merit (73%R)	+\$1,144
Protein	+0.12% +67	DWPS*	+\$1,219
Fat	+0.24% +111	Cheese Merit	+\$1,174

CDCB-S/HA Genomic Evaluation		(12/23)	
Type +1.40	UDC +1.57	FLC +0.32	BWC +0.72 78%R
		GTP1* +3158	

Health and Fertility		(12/23)	
SCS 2.48	75%R	MAS +3.8	70%R
LIV +1.2	71%R	DPR +0.6	74%R
CCR +2.2	74%R	FI +1.0	74%R
WT\$ +\$112		DCE 2.5%	57%R
CW\$ -\$39		HHP\$*	+\$1,327
		PL +6.7	74%R
		HCR +1.1	72%R
		SCE 2.6%	63%R
		DSB 4.6%	55%R



## PETE

14H016871 BADGER SIEMERS ODO PETE-ET  
8403257573126 99% RHA-I TR TP TC TM TV TL TY TD  
DMS: 456,345 B-Casein: A1A2 K-Casein: BB MWT



Accelerated Genetics™



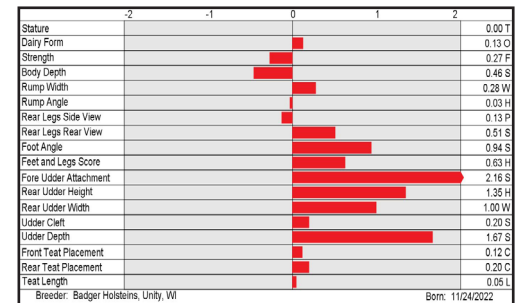
S: Ladys-Manor Overdo-ET  
D: Badger SSI Conway 17333-ET  
MGS: Sandy-Valley R CONWAY-ET  
MGD: Horsens S-S-I 3192 16136-ET  
MGGs: A-S-Cannon Frzzld BIG AL-ET

BADGER SSI OUT 7423 3192-ET (VG-88-EX-MS)  
Third Dam of PETE

CDCB-S Genomic Evaluation		(12/23)	
Milk	+156 80%R	Net Merit (73%R)	+\$1,190
Protein	+0.16% +50	DWPS*	+\$1,306
Fat	+0.44% +131	Cheese Merit	+\$1,226

CDCB-S/HA Genomic Evaluation		(12/23)	
Type +0.71	UDC +1.40	FLC +0.67	BWC -0.24 78%R
		GTP1* +3160	

Health and Fertility		(12/23)	
SCS 2.48	75%R	MAS +3.8	70%R
LIV +2.9	70%R	DPR +1.3	74%R
CCR +2.2	74%R	FI +1.3	74%R
WT\$ +\$177		DCE 1.9%	57%R
CW\$ -\$8		HHP\$*	+\$1,333
		PL +6.0	74%R
		HCR +1.0	72%R
		SCE 1.8%	63%R
		DSB 3.8%	55%R



SELECT SIREs




YOUR SUCCESS *Our Passion.*

Phone: (614) 873-4683 ♦ www.selectsires.com

\*Mastitis ResistantPRO, FeedPRO, RobotPRO, GrazingPRO, HHP\$, Your Success Our Passion. and the Select Sires logo are registered trademarks of Select Sires Inc., Plain City, OH. TPI is a registered trademark of Holstein Association USA. DWPS\$ and WT\$ are registered trademarks of Zoetis Inc., and its affiliates and/or its licensors. Zoetis wellness values are based on February 2024 Zoetis data. \*CW\$ is a trademark of Zoetis Inc., and its affiliates and/or its licensors. GForce and gender SELECTED are trademarks of Select Sires Inc. All gender SELECTED semen is processed using Ultraplus™ Technology. Ultraplus is a trademark of STGen LLC.

# MARCH GFORCE™ SIRES

## HUDSON

250H016955 DUCKETT HARMONY HUDSON-ET   
 8403260842989 99% RHA-I TR TP TC TM TV TL TY TD  
 DMS: 234,345 aAa: 423 B-Casein: A1A2 K-Casein: AB MWT

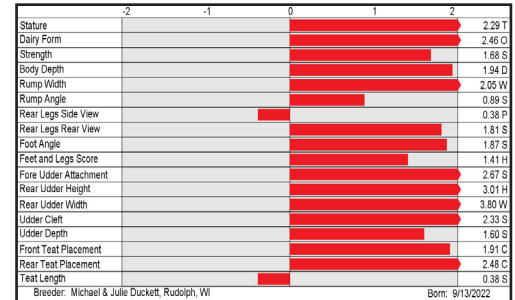


S-S-I DOC HAVE NOT 8784-ET (EX-96-EX-MS-DOM)  
 Dam of HUDSON

CDCB-S Genomic Evaluation		(12/23)	
Milk	+1,804 80%R	Net Merit (74%R)	+\$677
Protein	+0.01% +58	DWPS*	+\$652
Fat	+0.02% +75	Cheese Merit	+\$679


CDCB-S/HA Genomic Evaluation		(12/23)	
Type	+2.96	UDC	+2.30
FLC	+1.11	BWC	+1.08
79%R		GTPI*	+2854

Health and Fertility		(12/23)	
SCS	3.00 76%R	MAS	+0.6 71%R
LIV	-1.0 71%R	DPR	-1.6 74%R
CCR	-0.7 74%R	FI	-0.8 74%R
WT\$*	-\$18	DCE	1.8% 57%R
CWS*	+\$3	HHP\$*	+\$755
PL	+2.9 75%R	HCR	+1.6 72%R
SCE	2.2% 63%R	DSB	4.7% 55%R



S: AOT Perfect HARMONY-ET  
 D: S-S-I Doc Have Not 8784-ET (EX-96-EX-MS-DOM)  
 MGS: Woodcrest King DOC (EX-90)  
 MGD: Fly-Higher Jedi Havenot-ET (VG-86-VG-MS)  
 MGGS: S-S-I Montross JEDI-ET (EX-93-GM)

## ESKIL

250H017108 T-SPRUCE ESQUIRE ESKIL-ET   
 8403260815034 99% RHA-I TR TP TC TM TV TL TY TD  
 DMS: 234,123 B-Casein: A2A2 K-Casein: AA MWT

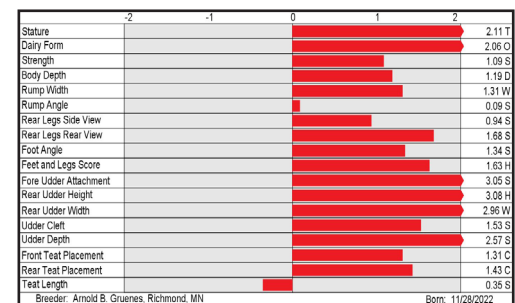


ENDCO YODER L7933 9839-ET (VG-86-VG-MS)  
 Third Dam of ESKIL

CDCB-S Genomic Evaluation		(12/23)	
Milk	+1,651 80%R	Net Merit (73%R)	+\$1,077
Protein	+0.05% +66	DWPS*	+\$1,093
Fat	+0.14% +105	Cheese Merit	+\$1,092

CDCB-S/HA Genomic Evaluation		(12/23)	
Type	+2.63	UDC	+2.38
FLC	+1.25	BWC	+0.62
79%R		GTPI*	+3151

Health and Fertility		(12/23)	
SCS	2.72 75%R	MAS	+2.5 70%R
LIV	+0.8 71%R	DPR	-0.2 74%R
CCR	+2.0 74%R	FI	+0.0 74%R
WT\$*	+\$54	DCE	2.4% 57%R
CWS*	-\$10	HHP\$*	+\$1,175
PL	+5.6 74%R	HCR	+0.6 72%R
SCE	2.4% 62%R	DSB	4.5% 55%R



S: Sandy-Valley ESQUIRE-ET  
 D: T-Spruce Conway 15574-ET (GP-84-VG-MS-DOM)  
 MGS: Sandy-Valley R CONWAY-ET  
 MGD: Mercedes Lionel Lass-ET  
 MGGS: Mr T-Spruce Frazz LIONEL-ET



**YOUR SUCCESS** *Our Passion.*

Phone: (614) 873-4683 ♦ [www.selectsires.com](http://www.selectsires.com)



\*HHP\$, Your Success Our Passion, and the Select Sires logo are registered trademarks of Select Sires Inc., Plain City, OH. TPI is a registered trademark of Holstein Association USA. DWPS and WT\$ are registered trademarks of Zoetis Inc., and its affiliates and/or its licensors. Zoetis wellness values are based on February 2024 Zoetis data. \*CWS is a trademark of Zoetis Inc., and its affiliates and/or its licensors. GForce, Showcase and gender SELECTED are trademarks of Select Sires Inc. All gender SELECTED semen is processed using Ultraplus™ Technology. Ultraplus is a trademark of STGen LLC.



# MARCH GFORCE™ SIRES

## OLOFF

550H016949 AURORA FROSTBITE OLOFF-ET  
8403256982557 99% RHA-I TR TP TC TM TV TL TY TD  
DMS: 135,345 B-Casein: A2A2 K-Casein: AB MWT



OLOFF

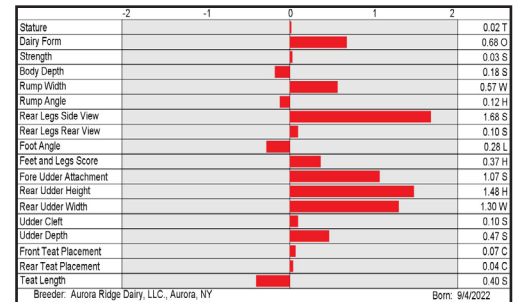
AVAILABLE ONLY IN SEXED SEMEN

S: T-Spruce G FROST BITE-ET  
D: Aurora Conway 23551-ET (VG-85-VG-MS)  
MGS: Sandy-Valley R CONWAY-ET  
MGD: Aurora Rapid 21849-ET (GP-82-DOM)  
MGGS: ST Gen R-Haze Rapid-ET

CDCB-S Genomic Evaluation			(12/23)	
Milk	+1,651	79%R	Net Merit (73%R)	+\$1,151
Protein	+0.05%	+65	DWPs*	+\$1,221
Fat	+0.17%	+113	Cheese Merit	+\$1,165

CDCB-S/HA Genomic Evaluation						(12/23)				
Type	+0.88	UDC	+0.98	FLC	+0.24	BWC	-0.21	78%R	GTP1*	+3057

Health and Fertility			(12/23)					
SCS	2.72	75%R	MAS	+1.8	70%R	PL	+5.3	74%R
LIV	+0.1	70%R	DPR	-0.1	74%R	HCR	+3.0	72%R
CCR	+1.9	74%R	FI	+1.1	74%R	SCE	1.8%	63%R
WT\$*	+\$46		DCE	2.1%	57%R	DSB	4.8%	55%R
CW\$*	+\$4		HHP\$*	+\$1,178				



## HOVLAND

614JE2240 VICTORY UNCOMMON HOVLAND-ET  
8403257225043 BBR 100 JH1F JNS-TF  
DMS: 345,234 B-Casein: A2A2 K-Casein: BB



JX VICTORY 50891 CHIEF 56815 (5) (VG-85%)  
Grandam of HOVLAND

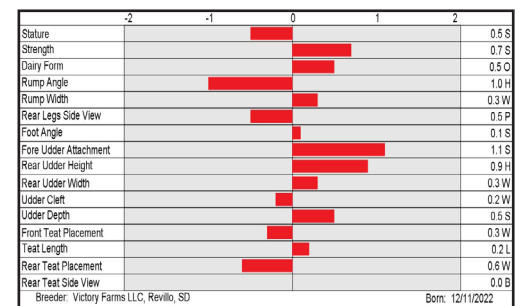
AVAILABLE ONLY IN SEXED SEMEN

S: Valsigna Gislev UNCOMMON-ET  
D: JX Victory 56815 Watkins 61617 (6)-ET (VG-80%)  
MGS: S-S-I Victory Dashiell WATKINS-ET  
MGD: JX Victory 50891 Chief 56815 (5) (VG-85%)  
MGGS: JX River Valley Chief (6)-ET

CDCB-S Genomic Evaluation			(12/23)	
Milk	+1,052	74%R	Net Merit (71%R)	+\$694
Protein	+0.05%	+49	Cheese Merit	+\$707
Fat	+0.06%	+65	CFP	+114

CDCB-S/AJCA Genomic Evaluation				(12/23)		
Type	+0.9	78%R		+14.4JUI*	GJPI*	+176

Health and Fertility			(12/23)					
SCS	2.85	73%R	PL	+4.6	71%R	LIV	+1.4	60%R
DPR	-0.4	68%R	HCR	+2.3	58%R	CCR	+1.1	68%R
DWPs*	+\$926		WT\$*	+\$97		CW\$*	+\$60	
M FVR	94	27%R	MAS	+0.0	58%R	ZMAS	106	35%R
HHP\$*	+\$778							



YOUR SUCCESS *Our Passion.*

Phone: (614) 873-4683 ♦ www.selectsires.com

\*Mastitis ResistantPRO, FeedPRO, RobotPRO, HHP\$, Your Success Our Passion, and the Select Sires logo are registered trademarks of Select Sires Inc., Plain City, OH. TPI is a registered trademark of Holstein Association USA. DWPs and WT\$ are registered trademarks of Zoetis Inc., and its affiliates and/or its licensors. Zoetis wellness values are based on February 2024 Zoetis data. \*CW\$ is a trademark of Zoetis Inc., and its affiliates and/or its licensors. JPI and JUI are trademarks of the American Jersey Cattle Association. GForce and gender SELECTED are trademarks of Select Sires Inc. All gender SELECTED semen is processed using Ultraplus® Technology. Ultraplus is a trademark of STGen LLC. Limitations and Conditions of Sale: gender SELECTED semen shall be used only for the single insemination of one female bovine during natural ovulation with the intent to produce a single offspring unless specifically approved on an individual customer basis by Sexing Technologies in writing. As a condition of purchasing gender SELECTED semen, the purchaser agrees that gender SELECTED semen will not be reverse sorted or re-sorted unless specifically permitted, in advance, on a case-by-case basis by Select Sires in writing. Select Sires intends to monitor the use of the gender SELECTED semen and vigorously enforce these restrictions on use. Please see <http://www.selectsires.com/designations/genderselected.html> for additional details.

# MARCH GFORCE™ SIREs

## ROBINSON

9AY149 SPRINGHILL PALMYRA ROBINSON  
8403242487321 AH1T AH2T \*TF AMF  
B-Casein: A1A2 K-Casein: AE



CDCB-S Genomic Evaluation			(12/23)		
Milk	+146	48%R	Net Merit (45%R)	-\$68	
Protein	+0.02%	+9	Cheese Merit	-\$70	
Fat	-0.03%	+1	CFP	+10	

CDCB-S/ABA Genomic Evaluation			(12/23)		
Type	+0.8	44%R	GPTI +439		

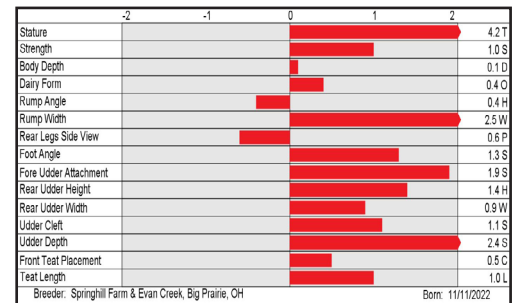
Health and Fertility			(12/23)					
SCS	3.21	43%R	PL	-0.7	37%R	LIV	-1.0	27%R
DPR	-1.7	36%R	HCR	-1.8	30%R	CCR	-2.9	35%R



### PUREBRED AYRSHIRE

S: Bear-Ayr Distinct KINGSIRE  
D: Palmyra Lochinvar B Ruth (EX-91-1E)  
MGS: Libby's LOCHINVAR  
MGD: Palmyra Berkely P Ruth-ET (EX-94-2E-ELITE)  
MGGS: Palmyra Bendig BERKELY-ET

PALMYRA BERKELY P RUTH-ET (EX-94-2E-ELITE)  
Grandam of ROBINSON



## SUNNY D

9BS947 LA RAINBOW SWEET SUNNY D ETV  
8403221039109 WT MT DT BH2T BH14T  
B-Casein: A2A2 K-Casein: AB



CDCB-S Genomic Evaluation			(12/23)		
Milk	+595	62%R	Net Merit (57%R)	+\$371	
Protein	+0.04%	+29	Cheese Merit	+\$379	
Fat	-0.01%	+23	CFP	+52	

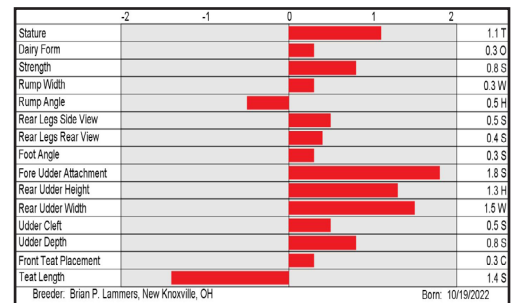
CDCB-S/BSCBA Genomic Evaluation			(12/23)		
Type	+0.9	65%R	+1.30UDC	+0.4Mobility	GPFR +143

Health and Fertility			(12/23)					
SCS	2.90	60%R	PL	+3.6	55%R	LIV	+0.9	43%R
DPR	+1.8	53%R	HCR	-0.9	42%R	CCR	+0.1	47%R
MKS	103	55%	SCE	2.7%	44%R	DCE	3.5%	35%R
MAS	-1.2	26%R						



S: HF Design ET  
D: La-Rainbow Sweet Sunray ET "GP83"  
MGS: La Rainbow Bfly SKYHIGH ET  
MGD: La Rainbow Sweet Smile ETV "1E91 1E92MS"  
MGGS: Hilltop Acres Biv Knockout

LA-RAINBOW SWEET SUNRAY ET "GP83"  
Dam of SUNNY D



**YOUR SUCCESS** *Our Passion.*

Phone: (614) 873-4683 ♦ [www.selectsires.com](http://www.selectsires.com)



\*Your Success Our Passion. and the Select Sires logo are registered trademarks of Select Sires Inc., Plain City, OH. "GForce", gender SELECTED and Showcase are trademarks of Select Sires Inc. All gender SELECTED semen is processed using Ultraplus™ Technology. Ultraplus is a trademark of STGen LLC.